

WELCOME
OHIO VALLEY REGIONAL
DEVELOPMENT COMMISSION'S

OVRDC GIS USER GROUP
MEETING

Held at

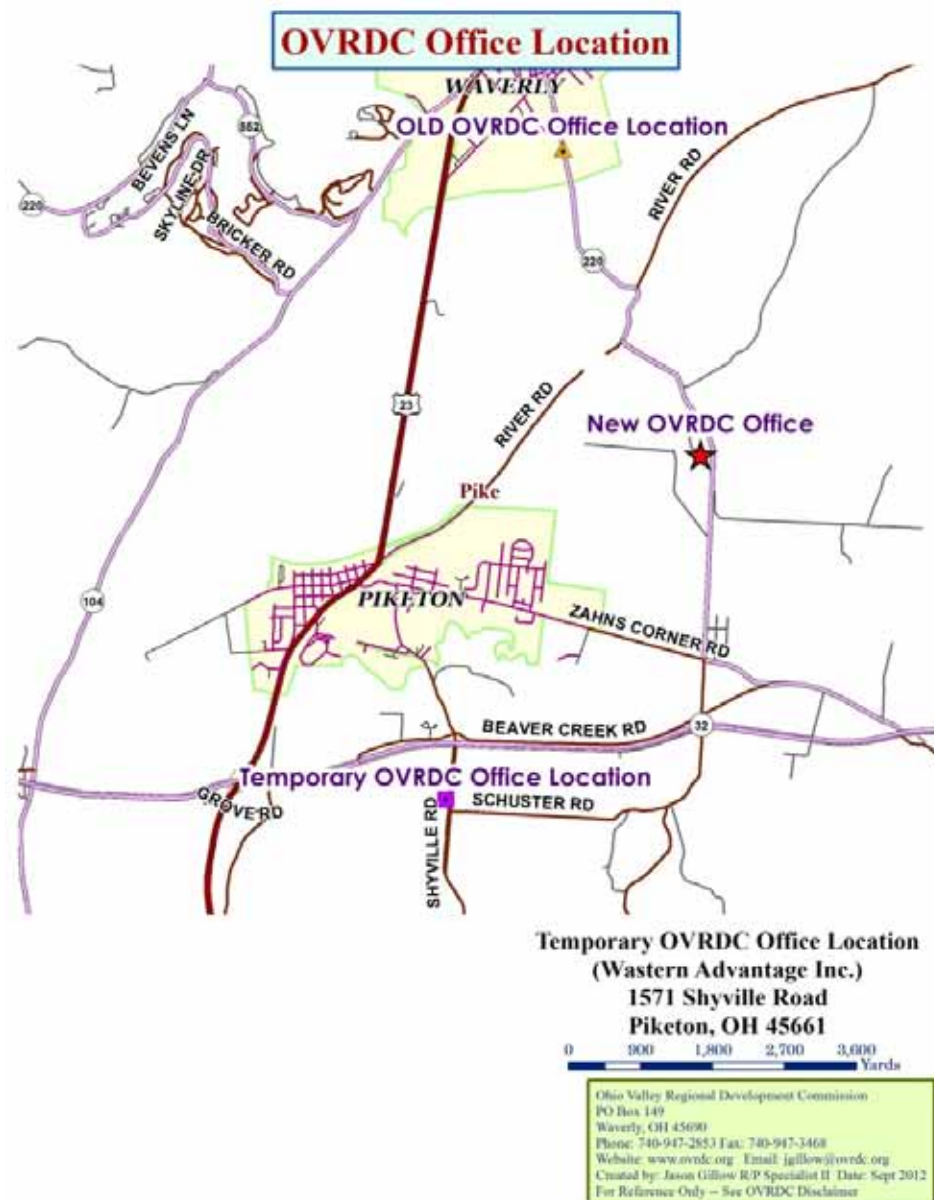
Pike Co Government Center, Waverly, OH

February 12, 2013



OVRDC GIS User Group Meeting

- Minutes from October 30th meeting.
- Announcements:
- OVRDC Website – [OVRDC GIS User Group](#)
- OVRDC has moved to temporary Office Location and is in the process of building new Office. The new office will be built by Spring of 2013 – check out our Facebook Page for Status





OVRDC GIS User Group Meeting

- **Federal Programs - News from Charles Hickman, Geographer, USGS -- on:**
 - **Launch of new Landsat 8 Satellite –** The Landsat era that began in 1972 will continue with the successful launch of the Landsat Data Continuity Mission (LDCM) in February 2013. Global, synoptic, and repetitive coverage of the Earth's land surfaces will continue at a scale where natural and human-induced changes can be detected, differentiated, characterized and monitored over time. Landsat imagery is used in landuse, remote sensor projects, etc. – OhioView is a good source and reference. Websites: www.ohioview.org & http://landsat.usgs.gov/LDCM_Landsat8.php
 - **For National Map, great source for national datasets, USGS have updated the elevation and LIDAR page at** <http://nationalmap.gov> .
 - **News on National Hydrography Dataset (NHD)**http://nhd.usgs.gov/newsletter_list.html
 - **National Map Users Conference, May 20-22, 2013 in Denver, held in concert with the USGS Community for Data Integration (CDI) Workshop, May 23-24, 2012.** <http://nationalmap.gov/uc/>
 - **Other USGS News:** http://nationalmap.gov/tnm_news.html
 - **National Geospatial-Intelligence Agency (NGA) contributed \$30,000 and USGS contributed \$15,000 for the Ohio Statewide Imagery Program 2013 (OSIP 2013).**
 - **Update on US Topo at:** <http://www.directionsmag.com/articles/us-topoa-new-national-map-series-2012-update/300690>



OVRDC GIS User Group Meeting

- **Other Federal Programs Updates -**
 - **For the Census Bureau,**
 - **Census Geography Dept.:** <http://www.census.gov/geo/>
 - **New 113th Congressional District Shapefiles and 2012 Tiger Files are available for download:** <http://www.census.gov/geo/maps-data/data/tiger-line.html>
 - **2010 TIGER/Line® Shapefiles Pre-joined with Demographic Data:** <http://www.census.gov/geo/maps-data/data/tiger-data.html>
 - **New look for American FactFinder:**
<http://factfinder2.census.gov/faces/nav/jsf/pages/index.xhtml>
 - **The National Geodetic Survey Releases Updated Ten-Year Strategic Plan 2013 – Government Agency responsible to maintaining Continuously Operating Reference Station (CORS) Program. Websites:**
www.ngs.noaa.gov & http://geodesy.noaa.gov/web/news/Ten_Year_Plan_2013-2023.pdf



OVRDC GIS User Group Meeting

- **Federal Programs**

- USDA Farm Services Agency (FSA) the National Agricultural Imagery Program (NAIP). Ohio is now scheduled for new one-meter, leaf-on, color NAIP imagery in the **summer of**

- 2014**. <http://www.fsa.usda.gov/FSA/apfoapp?area=home&subject=prog&topic=nai>

- USDA NAIP Data along with other datasets (DEM data) are available to download at - **The Geospatial Data Gateway (GDG)** – it is the One Stop Source for environmental and natural resources data, at anytime, from anywhere, to anyone. <http://datagateway.nrcs.usda.gov>

- USGS – Earth Explorer : <http://earthexplorer.usgs.gov>

- FEMA DFIRM Data: National Flood Hazard Layer (NFHL):

- <https://msc.fema.gov/webapp/wcs/stores/servlet/FemaWelcomeView?storeId=10001&catalogId=10001&langId=-1>



OVRDC GIS User Group Meeting

State Program Initiatives:

- **LBRS – See Handout - Online Whitepaper Report at <http://ogrip.oit.ohio.gov/ProjectsInitiatives/LBRS.aspx>**
 - 75 counties – New to download Lawrence and Meigs Counties
 - Final counties that do not have LBRS in OVRDC Region include Clermont and Scioto Counties.
 - State of Ohio and ODOT wants to complete this program for Ohio – Currently, ODOT is willing to fund up to 80% on a LBRS Project, contacted Dave Blackstone, Section Manager for ODOT dave.blackstone@dot.state.oh.us for further details. Other funding is CEAO <http://ceao.org/> and OGRIP.
 - There has been changes coming down to state DOTs from the Federal Government.
 - OGRIP and ODOT willing to work with counties.
 - LBRS positions counties to support the transition to NG9-1-1



OVRDC GIS User Group Meeting

- **State Program Initiatives:**
 - OSIP II – imagery for Ohio – 2012 counties are completed and ready for delivery. New mandate on delivery – OGRIP will not deliver hard drives to counties that have not filled out their yearly county GIS profile. <http://ogrip.oit.ohio.gov/Coordination/CountyProfiles.aspx>
 - 2012 County Mosaic will be ready to download.
 - 2013 flights set for March-April 2013 includes Central Ohio. OVRDC counties included Fayette, Ross and Vinton counties.
 - See handout for OSIP Status <http://ogrip.oit.ohio.gov/ProjectsInitiatives/StatewideImagery.aspx>
 - OGRIP - Ohio County Profiles – See handouts and link above
 - OGRIP Forum Meeting - February 25, 2013 at ODOT Central Office Columbus, Ohio.
 - OGRIP and ODOT - Talk of developing a new state parcel mapping program similar to LBRS – new interest from different sources. Part of the focus from Oil and Gas Shale.
 - For more information contact:
 - Dave Blackstone, Section Manager for ODOT dave.blackstone@dot.state.oh.us or
 - Jeff Smith, OGRIP Jeff.Smith@oit.ohio.gov



OVRDC GIS User Group Meeting

- Ohio URISA
- Chapter News - For the latest go to www.ohurisa.org
- Highlights:
 - URISA Leadership Academy - ULA 2013 will take place May 13-17, 2013 at the Hyatt Regency Riverwalk in San Antonio, Texas. Early discounted rate available until March 1!
 - 2013 URISA Exemplary Systems in Government (ESIG) Awards Program Announced - The Urban and Regional Information Systems Association (URISA) is accepting applications for its Exemplary Systems in Government (ESIG) Awards through Monday, April 22, 2013. The awards recognize exceptional achievements in the application of geospatial information technology that have improved the delivery and quality of government services.
 - Presentation Proposals Invited for GIS-Pro 2013 - Presentation proposals are now being accepted for GIS-Pro 2013: URISA's 51st Annual Conference for GIS Professionals taking place September 16-19, 2013 in Providence, Rhode Island. Proposal deadline is March 4.
MATCH - Please follow the link if you're interested in volunteering or finding a mentor.
User Group Funding - See our website on how to request funding.



OVRDC GIS User Group Meeting

- **Local and Regional Initiatives:**
 - **Appalachian Ohio Geospatial Data Partnership**
 - **Federal Geographic Data Committee (FGDC): Article in the 2012 Annual Report of the FGDC on AOGDP: See Handout**
 - **In the process of becoming a 501 C 3 – non-profit organization.**
 - **2012 NSDI CAP Grant to collect and update of Ohio GIS Metadata in ROMONA (*Random Access Metadata for Online Nationwide Assessment*) Project. Project is largely completed. <http://www.bhgis.org/inventory>**
 - **Local Government Innovation Fund Grant (LGIF) – Gallia County has signed contract with Voinovich Center – OVRDC is written in as a sub-contractor to promote the program.**
 - **www.geospatialpartnership.org**



OVRDC GIS User Group Meeting

- **Local and Regional Initiatives:**
 - **Southern Ohio GIS User Group – Local area water companies – News?**
 - Heather E. Cummings
 - Highland County Water Company, Inc.
 - 937-393-6092 or 937-393-4281 ext 104
 - heatherc@computers-plus.net



OVRDC GIS User Group Meeting

- **OVRDC Infrastructure Mapping Project**
 - OVRDC is providing infrastructure and utility mapping services to local governments and communities through the use of its GIS and GPS.
 - OVRDC uses a Trimble GeoXH 6000 Series Handheld GPS, Trimble LaserAce Range Finder and other equipment.





OVRDC GIS User Group Meeting

- **OVRDC Infrastructure Mapping Project**
 - **Communities thus far:**
 1. **Village of Greenfield - Complete**
 2. **Village of Lynchburg – Wrap up**
 3. **Gallia County (Dan Evans Industrial Park) – Wrap up**
 4. **City of Wellston - Current**
 5. **Village of West Union – Spring 2013**
 6. **Village of Williamsburg – Spring 2013**
 7. **Village of Aberdeen**
 8. **Village of Piketon**
 9. **Village of Seaman**
 10. **Village of New Richmond**
 11. **Village of Georgetown**
 12. **City of Gallipolis**
 13. **Village of Winchester**
 14. **Village of McArthur?**



OVRDC GIS User Group Meeting

- **OVRDC Infrastructure Mapping Project**
 - Working with local GIS personal to help acquire data and scanning services.
 - Partnership with Buckeye Hills – Hocking Valley Regional Development District in offering ArcGIS Server online mapping services to communities.
 - Standard Products delivered:
 - PDF Maps
 - Hardcopy maps
 - Arc Reader Data Package Maps on DVD
 - DEMO



OVRDC GIS User Group Meeting

- **OVRDC Water and Sewer Survey –**
 - Jessica Purdon, Economic Development Specialist, OVRDC
 - Email jpurdon@ovrdc.org
- **Other News:**
 - Trimble: See Handouts
 - ODOT Rural Transportation Planning Organization Pilot Project - OVRDC
 - ArcGIS: See handouts – sign up for Newsletters and emails it is free:
<http://www.esri.com/esri-news/publications>



OVRDC GIS User Group Meeting

- **Round table Discussion**
 - What GIS activities are going on in your office?
 - County GIS Updates
 - GIS activities in the region
 - Future ideas for the group.



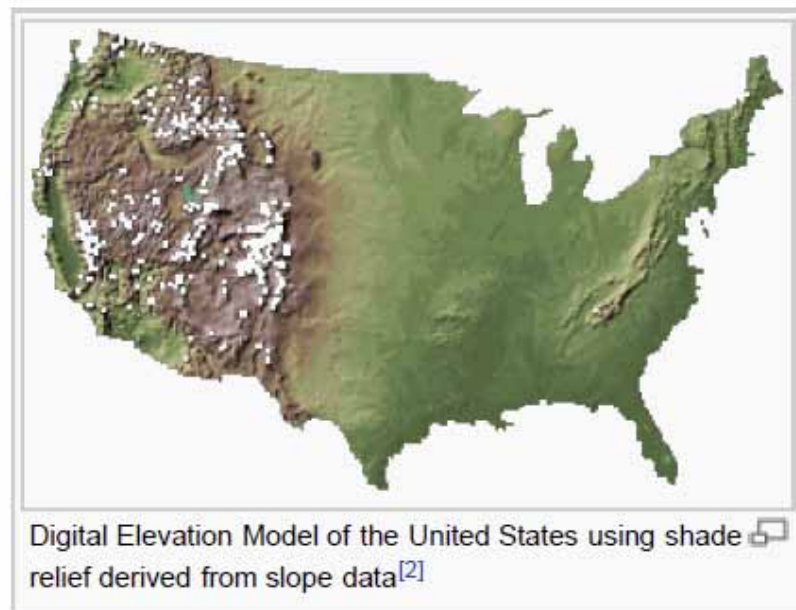
OVRDC GIS User Group Meeting

- **Presentation** – “Tool of the Meeting” – What are DEM’s – Basics and demonstration of ESRI Spatial Analysis
- **Speakers:** *Jason Gillow*



OVRDC GIS User Group Meeting

- **What are DEM's – (wiki.GIS.com) -**
A digital elevation model (DEM) is a digital representation of ground surface topography or terrain. It is also widely known as a digital terrain model (DTM). A DEM can be represented as a raster (a grid of squares) or as a triangular irregular network. DEMs are commonly built using remote sensing techniques, but they may also be built from land surveying. DEMs are used often in geographic information systems, and are the most common basis for digitally produced relief maps.





OVRDC GIS User Group Meeting

- **What are DEM's – Sources to download DEM's**
 - OGRIP -
<http://ogrip.oit.ohio.gov/ServicesData/GeodataDistribution/DEM.a.spx>
 - OGRIP - OSIP 1 – Highly detailed information -
<http://ogrip.oit.ohio.gov/ProjectsInitiatives/Statewidemagery.aspx>
and <http://gis3.oit.ohio.gov/geodata/>
 - USGS CLICK - <http://lidar.cr.usgs.gov/>
 - USGS NED - The National Elevation Dataset (NED) is the primary elevation data product of the USGS. The NED is a seamless dataset with the best available raster elevation data of the conterminous United States, Alaska, Hawaii, and territorial islands. Ohio's OSIP data was used to upgrade this data for Ohio.
<http://ned.usgs.gov/Ned/index.asp>
 - USGS National Map - <http://nationalmap.gov/viewer.html>
 - USDA NRCS - The Geospatial Data Gateway (GDG) -
<http://datagateway.nrcs.usda.gov/>



United States Department of Agriculture
Natural Resources Conservation Service

GEOSPATIAL DATA GATEWAY



- [Home](#)
- [Login](#)
- [Check Order](#)
- [Status Maps](#)
- [News](#)
- [Data Policy](#)
- [FAQ](#)
- [Help](#)
- [Admin](#)
- [Contact Us](#)

Search

- Browse by Subject**
- ▶ Natural Resources Conservation Service
 - ▶ Farm Services Agency
 - ▶ Rural Development
 - ▶ National Geospatial Management Center (NGMC)
 - ▶ Aerial Photography Field Office (APFO)
 - ▶ Web Soil Survey
 - ▶ Soil Data Mart
 - ▶ eFOTG
 - ▶ Geo.Data.Gov
 - ▶ APFO Customer Order Entry System
 - ▶ USGS Maps, Imagery and Publications
 - ▶ National Atlas
 - ▶ National Map Viewer 2.0
 - ▶ US Census Bureau
 - ▶ Geography

You are here: Home

Welcome to GDG

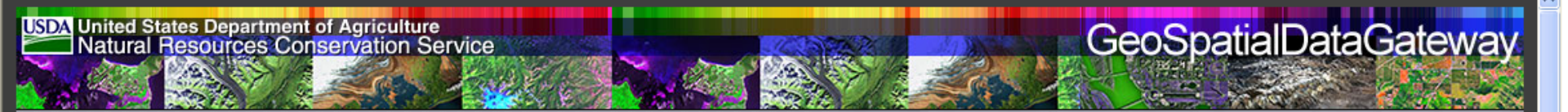


The Geospatial Data Gateway (GDG) is the One Stop Source for environmental and natural resources data, at anytime, from anywhere, to anyone. The Gateway allows you to choose your area of interest, browse and select data from our catalog, customize the format, and have it downloaded or shipped on CD or DVD.

This service is made available through a close partnership between the three Service Center Agencies ([SCA](#)); Natural Resources Conservation Service ([NRCS](#)), Farm Service Agency



- I Want To...**
- **Order by County/Countries**
 - **Order by State**
 - **Order by Place**
 - **Order by Bounding Rectangle (Latitude and Longitude)**



1-WHERE Order by County/Countries

Using the panel in the middle select the state for your order. A list of available counties for that state will then be displayed. Select one or more items from the **Available Counties**. The *shift* and *ctrl* keys are used for multiple selections. Once chosen, use the **>>** button to move those counties to the **Selected Counties** list. You may remove these items by using the **<<** button. Once you are satisfied with your selected counties list use the **Submit Selected Counties** button to move them to the **YOUR ORDER** panel on the far right.

WHERE

If you wish to change the method for selecting the order area, click [HERE](#).

Order by County/Countries

Select State for order:

Select County or Counties

- Sandusky
- Scioto
- Seneca
- Shelby
- Stark
- Summit
- Trumbull
- Tuscarawas
- Union
- Van Wert
- Warren
- Washington
- Wayne
- Williams

Vinton

<< >>

YOUR ORDER

Order Area (Where): None

Order Map Layers (What):

Order Format (How): None
Order Projection (How): None
Order Inclusion (How): None
Order Delivery Method (How): None

Order Recipient (Who):

The list in the middle pane indicates the available map layers for your area of interest. The number of maps and total size of the map layers are listed next to the description. Clicking on the **i** icon will provide a pop-up window with that map layer's description. Use the **+** icon to get a list of individual maps for that map layer. Within the list of maps, use the **m** icon to get metadata for the specific map and the **globe** icon for an individual map preview. You may collapse this map list with the **-** icon. Your selections will be added to the YOUR ORDER Panel on the far right.

You may change your map layers after this step but all of the subsequent choices made for your order will be removed.

Maps in layers that are **"...by State"** cover an entire state.

- 3-HOW
- 4-WHO
- 5-REVIEW

Here are the available map layers for your selected area of interest.

- 1971-2000 Annual Average Maximum Temperature by State, 1 map 2.809 MB **i** **+**
- 1981-2010 Annual Average Minimum Temperature by State, 1 map 2.182 MB **i** **+**
- 1981-2010 Annual Average Maximum Temperature by State, 1 map 2.832 MB **i** **+**

Easements

- NRCS Conservation Easement Areas by State, 1 map 0.180 MB **i** **+**
- NRCS Conservation Easement Points by State, 1 map 0.123 MB **i** **+**

Elevation

- National Elevation Dataset 3 Meter, 19 maps 1552.057 MB **i** **+**
- National Elevation Dataset 10 Meter, 19 maps 144.549 MB **i** **+**
- National Elevation Dataset 30 Meter (60 meter AK), 1 map 53.961 MB **i** **+**

Geographic Names

- Geographic Names - Populated Places, 1 map 0.051 MB **i** **+**
- Geographic Names - Non-Populated Places, 1 map 0.468 MB **i** **+**

Geology

- National scale Geology by State, 1 map 28.323 MB **i** **+**

Government Units

- NRCS Counties by State, 1 map 0.938 MB **i** **+**
- NRCS States by State, 1 map 0.342 MB **i** **+**
- TIGER/NRCS 113th Congress Districts by State, 1 map 1.641 MB **i** **+**
- TIGER 2010 Urban Areas by State, 1 map 5.057 MB **i** **+**
- Federal, State, Tribal, etc. Protected Areas Land Ownership, 1 map 0.845 MB **i** **+**

Hydrography

- National Hydrography Dataset 1:24,000, 2 maps 55.734 MB **i** **+**

CONTINUE

Order Area (Where): Vinton County, Ohio

Order Map Layers (What):

Order Format (How): None
 Order Projection (How): None
 Order Inclusion (How): None
 Order Delivery Method (How): None

Order Recipient (Who):



Ohio Geographically Referenced Information Program

Ohio.gov State Agencies | Online Services

- Home
- News
- Coordination
- Services/Data
- Projects/Initiatives
- Events
- Contact OGRIP

Ohio OIT



State of Ohio
 Administrative Services
 Information Technology
 Live Help

Projects & Initiatives

Statewide Imagery
 LBRS
 Ohio Metadata Server

WELCOME TO OGRIP

OGRIP (Ohio Geographically Referenced Information Program) is an organization whose goals are to: encourage the creation of digital geographic data of value to multiple users, foster the ability to easily determine what geographic data exists and foster the ability to easily access and use this data.

OGRIP is made up primarily of volunteers who share a common interest in the development of Geographic Information Systems (GIS) and use of geographic information in Ohio. These volunteers include representatives of several state agencies, local and regional governments, utilities, universities, private organizations and other interested individuals.

OGRIP News

NASCIO's State and Local Collaboration Resources

The Location Based Response System highlighted by the NASCIO - GOVERNMENT AFFAIRS & ADVOCACY | Cros...

New Officer's Elected for 2013

At the OGRIP Forum meeting held on November 26, 2012, new officers were elected as follows: Lindsey ...

Cooperative Purchasing Agreement

OSIP I - This section is specific to the previously completed 2006-2008 OSIP project.

Products

Standard OSIP I products included 1FT Color Orthophotography in GeoTIFF and MrSID format, 2.5FT DEM in ArcInfo GRID and ASCII grid format, and 2M LiDAR postings in LAS format.

Optional OSIP I products included 6IN Color Orthophotography, 2FT and 5FT contours, and 1M Color Infrared photography.

Project Status

Standard OSIP imagery and elevation products were collected from 2006 - 2008. The state took delivery of 51 northern tier counties in June 2007. The remaining counties were delivered in 2008 & 2009.

To date 36 of the state's 88 counties have taken advantage of the OSIP program to obtain enhanced imagery and elevation data through a Cooperative Purchase Agreement (CPA) with the State of Ohio. The CPA benefits the state by providing enhanced resolution products **OSIP while saving participating counties an estimated 4.5 million in taxpayer dollars** over the cost of obtaining these imagery, LiDAR and elevation products individually. The savings are due in large part to the economy of scale realized through a statewide program and the fact that the state is responsible for the cost of project administration.

Data Distribution

OSIP data is available through several delivery mechanisms. The primary method of delivery is through on-line Map Services, both ArcIMS and WMS. Map Service [connection information](#) is available through the metadata for the services and is available from the [Ohio Metadata Server](#) by searching for "Live Data and Maps" using the keyword "OSIP". GIS client applications can connect directly to these services to access terabytes of imagery without the need to download and store the data locally.

Compressed MrSID imagery, LiDAR, and DEM data is available for download on a per county basis with links provided on the [Ohio Metadata Server](#) by searching for "Downloadable Data" using the keyword "OSIP" or by visiting the [OSIP Data Downloads](#) page.

In addition the 2M LiDAR data in LAS format and derived DEM data is being hosted by the USGS Center for LiDAR Information Coordination and Knowledge ([CLICK](#)) site.

OSIP I Links

- [OSIP Data Downloads Page](#)
- [Program Description](#)
- [OSIP I RFP Contract Award](#)



2011 OSIP II

[DOWNLOAD BY COUNTY](#)

[DOWNLOAD BY INDIVIDUAL TILE](#)

2006- 2010 OSIP I DOWNLOADS

[DOWNLOAD BY COUNTY](#)

[DOWNLOAD BY INDIVIDUAL TILE \(Map Viewer\)](#)

OSIP INDEX TILE LAYOUTS BY STATE PLANE ZONE:

[State Plane North 1FT \(5000' x 5000'\)](#)

[State Plane South 1FT \(5000' x 5000'\)](#)

[State Plane North 6IN \(2500' x 2500'\)](#)

[State Plane South 6IN \(2500' x 2500'\)](#)

[State Plane South 3IN \(1250' x 1250'\)](#)



OHIO GEOGRAPHICALLY REFERENCED INFORMATION PROGRAM

Download OSIP Imagery and Elevation Data by Tile

This download tool provides access to individual files of OSIP Elevation and high-resolution Imagery data. For complete countywide data sets please visit our Download Data by County page



Latitude:

Longitude:

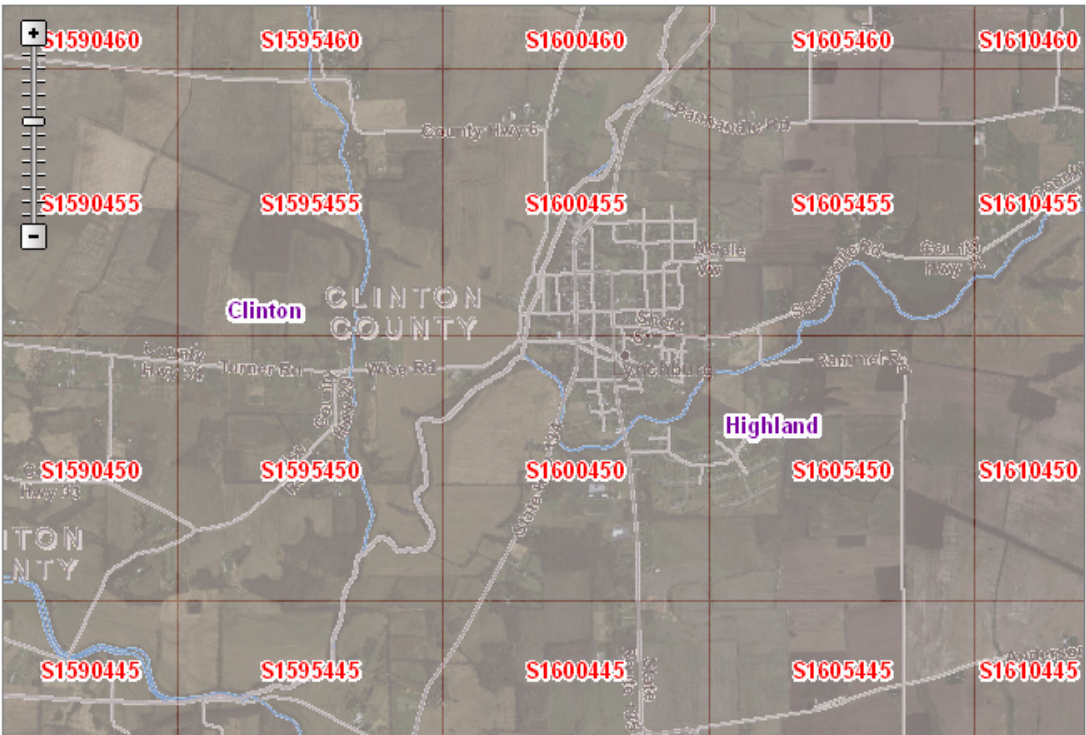
U. S. NationalGrid: Zoom

- Tile Labels
- Tile Index
- Basemap
- OSIP Imagery
 - South

Downloads:

Tile #	TIFF	SID	LiDAR	GRID	ASCII
S1605445	TIFF	SID	LiDAR	GRID	ASCII
S1605450	TIFF	SID	LiDAR	GRID	ASCII
S1605455	TIFF	SID	LiDAR	GRID	ASCII
S1605460	TIFF	SID	LiDAR	GRID	ASCII
S1610445	TIFF	SID	LiDAR	GRID	ASCII
S1610450	TIFF	SID	LiDAR	GRID	ASCII
S1610455	TIFF	SID	LiDAR	GRID	ASCII
S1610460	TIFF	SID	LiDAR	GRID	ASCII
S1590445	TIFF	SID	LiDAR	GRID	ASCII
S1590450	TIFF	SID	LiDAR	GRID	ASCII
S1590455	TIFF	SID	LiDAR	GRID	ASCII

NA - Not Available



Scale 1 : 36,112



OVRDC GIS User Group Meeting

- **What are DEM's – USGS NED - All elevation values are in meters and, over the conterminous United States, are referenced to the North American Vertical Datum of 1988 (NAVD 88). The vertical reference will vary in other areas. NED data are available nationally (except for Alaska) at resolutions of 1 arc-second (about 30 meters) and 1/3 arc-second (about 10 meters), and in limited areas at 1/9 arc-second (about 3 meters). In most of Alaska, only lower resolution source data are available. Today we will be looking at 3-Meter area for Ohio.**



OVRDC GIS User Group Meeting

- **What are DEM's – Using today ArcGIS Spatial Analyst extension provides a broad range of powerful spatial modeling and analysis capabilities. You can create, query, map, and analyze cell-based raster data; perform integrated raster/vector analysis; derive new information from existing data; query information across multiple data layers; and fully integrate cell-based raster data with traditional vector data sources.**



OVRDC GIS User Group Meeting

- What are DEM's
- Looking at Lynchburg OSIP DEM Data 2.5ft Resolution
- Vinton County USGS NED Data 3 Meter
- Spatial Analyst Tools:
 - Mosaic
 - Hill shade
 - Aspect
 - Slope
 - Contours
 - Raster Calculator
 - Overview of the tools



OVRDC GIS User Group Meeting

What are DEM's

DEMONSTRATION

Software

ArcGIS Basic (ArcView) 10.1

Spatial Analyst

www.esri.com



OVRDC GIS User Group Meeting

- **What are DEM's**
- **Wide range of analyst can be done with DEM's**
 - View shed Analyst
 - Groundwater
 - Hydrology
 - Image Analysis
 - Landuse Analysis
 - See Brochure
 - Questions



OVRDC GIS USER GROUP

- **Group Discussion**
- ***Next Meeting set for
Tuesday, May 14, 2013,
1 PM to 3 PM at Pike
County Government Center.***



OVRDC GIS USER GROUP

Jason Gillow

Research/Planning Specialist II

Ohio Valley Regional Development Commission

P.O. Box 149

Waverly, OH 45690

Phone: 740-947-2853 or 800-223-7491 (In Ohio)

Fax: 740-947-3468

Website: www.ovrdc.org

Email: jgillow@ovrdc.org or email@ovrdc.org