

Comprehensive Economic Development Strategy

2010 Performance Report



**Ohio Valley Regional Development Commission
9329 State Route 220 East, Suite A
Waverly, Ohio 45690-9012
www.ovrdc.org**

This document was prepared under an award from the U.S. Department of Commerce,
Economic Development Administration, Grant Award #06-83-05509

Table of Contents

Chapter 1

Introduction	Pages 1-17
Who is OVRDC?.....	1
Transportation Access.....	1
Linear Infrastructure.....	1-2
Natural Resources	2-4
Environmental Issues	4
Population.....	4-5
Economy.....	5-8
Housing	8-9
Income.....	9
Poverty	9
Environmental Infrastructure	10
Selected Non-Linear Infrastructure.....	10-11
Economic Cluster Analysis	11-13
Past EDA Investments.....	13-17

Chapter 2

Community and Private Sector Participation in CEDS.....	Pages 1-5
OVRDC Full Commission	1
OVRDC Executive Committee	2-3
OVRDC CEDS Committee	3-4
OVRDC Staff	4-5

Chapter 3

CEDS Performance Measures Review.....	Pages 1-15
CEDS Goals, Objectives and Plan of Action	2
Goal 1: Share the Southern Ohio Story.....	2-4
Goal 2: Strengthen Our Strengths	5-8
Goal 3: Cultivate Top Talent.....	8-9
Goal 4: Invest in Our Local/Regional Assets.....	9-13
Goal 5: Focus on Our Customers and Shareholders	13-15

OVRDC Profile **Exhibit A**

Full Commission, Project Review Committee, RLF Committee **Exhibit B**

EDA and ARC Projects **Exhibit C**

County Resolutions **Exhibit D**

Private Investment List & WARN Notices **Exhibit E**

Executive Director's Annual Report **Exhibit F**

C
H
A
P
T
E
R

1

Introduction

Chapter 1: Introduction

Who is OVRDC?

The Ohio Valley Regional Development Commission consists of 12 counties within southern Ohio. These counties are Adams, Brown, Clermont, Fayette, Gallia, Highland, Jackson, Lawrence, Pike, Ross, Scioto and Vinton. The OVRDC District, which totals 6,022 square miles, represents 13.4 percent of the total area of Ohio; the population of 635,970 represents 5.6 percent of the total state population. Within OVRDC’s twelve counties there are 171 Townships, 70 Villages, 9 Cities, and 14 Census Designated Places (CDP).

Transportation

Access

Map 1. – “Main Transportation Access Areas within OVRDC Region” depicts the major transportation access points into and out of the OVRDC District. The next section will discuss the major transportation segments listed on this map.

Linear

Infrastructure

Major routes that transverse the district are essential to the movement of goods and people and for the economic health of the district. These major routes include Interstate 275 & 71, U.S. 23, U.S. 35, U.S. 52, U.S. 62, U.S. 50, U.S. 68 and The Appalachian Highway (SR 32).

Additionally, according to ODOD Office of Strategic



Map 1 - Main Transportation Access Areas within OVRDC Region

Research 2002-2008 *Ohio County Profiles*, there has been an increase in the percent change of the number of passenger vehicles for Ohio at .6% with OVRDC at .5%, the number of trucks have increased faster for OVRDC at 3.4% and Ohio at 1.1%. This shows an increase in trucking and freight movement through the district.

Railroads

The OVRDC District is served by two major railroads: Norfolk Southern Corporation (NS) and CSX Transportation Inc. (CSXT). According to ODOT's Division of Rail Transportation, NS was created in 1982 and serves 20 states. CSXT was created in 1982 and serves 22 states. NS main north-south line traverses the region from Columbus, Ohio, to Hampton Road, Virginia. In April 2007, according to Ohio Department of Development, NS was awarded a 50 percent tax credit for an eight-year term to re-open its Portsmouth repair facility, located in Scioto County, Ohio. Another project that will affect the rail in the OVRDC District, started around October 2007 is called the "Heartland Corridor", which is a three-year engineering effort to increase intermodal freight capacity by raising vertical clearances in 28 tunnels on a Norfolk Southern rail line between the port of Hampton Roads, Virginia, to Columbus, Ohio, and Chicago, Illinois.

River Transportation

The OVRDC District is ideally located to take advantage of low transportation rates afforded by river transportation. The Ohio River borders Adams, Brown, Clermont, Gallia, Lawrence and Scioto counties and is navigable throughout. Barge transportation is available along the Ohio-Mississippi-Missouri River system, which connects the district with other industrial cities throughout the Midwestern and southern United States. The principal products transported on the Ohio River are coal, petroleum, sand, gravel, chemicals, iron, steel and grains. The State of Ohio ranks 5th in waterborne domestic tonnage (102 million short tons), according to the Army Corps of Engineers.

Airports

There are three major commercial airports within a maximum one and a half to two hour drive from the OVRDC District. They include The Greater Cincinnati International Airport, Port Columbus International Airport, and Tri-State Airport near Huntington, West Virginia. In 2004, OVRDC conducted an airport survey on the local airports within the district. Each county in the OVRDC District has a county airport. The Ross County Airport, Greater Portsmouth Regional Airport, Fayette County Airport and Jackson County Airport can handle large corporate aircraft. At this time, the majority of the district is served by both local and commercial facilities, although some safety, communications equipment, expansion, and additional hanger facilities are necessary.

Natural Resources

Forest Resources

One of the most valuable and abundant resources in the OVRDC District is the forest resource. According to the *Ohio EPA Land Cover Classification (1999 – 2003)*, the OVRDC District contains about 2,161,566 acres of forested land and Ohio has 10,115,167 acres. The district's forested lands are held in private ownership with only 20% or 451,851 acres of the total acreage held by federal, state or local public agencies. Major forest types in the district include oak-hickory and maple-beech-birch forests; with rarer Virginia-pitch pine and oak-pine forest types

also. In addition, our forests provide wood for use in a diverse wood products industry, which includes both primary and secondary processing facilities. Additionally, the district's forestlands attract tourists living outside the district to its many recreational areas, while greatly improving the quality of life for area residents.

Water Resources

The OVRDC enjoys an abundance of water resources, both surface and groundwater. Major waterways in the district include the Scioto, Little Miami and Ohio Rivers, which are fed by an abundant network of smaller tributary streams. In addition, there are major streams that flow through the OVRDC District such as Ohio Brush Creek, Paint Creek, Raccoon Creek and others. Numerous lakes in the district also provide water for consumption and recreational purposes. According to the *Ohio EPA Land Cover Classification (1999 – 2003)*, the OVRDC District and Ohio contains about less than 1% of the land cover considered "Open Water". Principal aquifer systems in much of the district underlie the Ohio River Valley and floodplain segments of the major tributaries. The water resources in the OVRDC District also provide recreation activities to the public like boating, swimming, fishing, etc.

Mineral Resources

The OVRDC District contains deposits of such industrial minerals as sand, gravel, clay, shale, limestone and dolomite, all of which are used primarily in the construction industry. Between 1993-2007, the employment at Ohio Industrial Mineral Operations for the OVRDC District increased by 13.7% compared to 3.2% for Ohio. However, even with the slow increase in employment, there is still a steady demand for minerals. This may indicate a slowdown in development and construction across the district and the state. There is still construction and upkeep of new and current infrastructure that helps in the demand for such products.

Fossil Fuels

Fossil fuels in the OVRDC District include limited natural gas, crude oil, and coal deposits. The local coal industry provides district residents with employment in mining and coal transportation. Rail and barge transportation in the district is also partially dependent on business from the coal industry. According to *Ohio State Energy Profile*, Energy Information Administration, Office Energy Statistics from the U.S. Government, the OVRDC District has six coal power plants and two natural gas power plants. In addition, several natural gas pipelines run through the OVRDC District. Therefore, fossil fuels are an important source of energy production for the district and Ohio.

Renewable Energy

Over the last few years with raising costs of fossil fuels energy, rise of alertness in greenhouse gases and environmental issues, development of sustainable energy sources, creating economic opportunities, developing a national energy source and other factors has brought the awareness of renewable energy to the forefront in the economic, political and social arenas. According to Ohio Department of Development, *Ohio Energy Office and Ohio Department of Agriculture* key areas for renewable energy in Ohio are: hydroelectric power, wind, biomass, biofuels and solar.

According to a study conducted by the Idaho National Engineering and Environmental Laboratory, the OVRDC District identified 60 sites for potential development of low power and small hydroelectric projects. According to a map called "*Wind Resources of Ohio*" produced for

the Ohio Department of Development, due to the topography of a majority of the OVRDC District, wind power is not very efficient, except for sections of Fayette, Highland, and Ross Counties. The OVRDC District has the potential for development of biomass and bio-fuels, such as, wood fiber, ethanol, and bio-diesel. Another source for energy is methane production from landfills, which OVRDC has six within the district. Solar energy is a viable option for Ohio and the OVRDC District. Southern Ohio receives more annual average solar resources potential than northern Ohio according to *National Renewable Energy Laboratory*. The OVRDC District would benefit best by a combination of multiple renewable energy resources to generate power and fuel than just relying on one source. The OVRDC District has the potential to generate this power from multiple resources.

Environmental Issues

Floodplain Management and Flooding

The OVRDC District has access to two major rivers: the Ohio River and the Scioto River. Several communities along the Ohio and Scioto Rivers and within the district are affected by flooding every year. In February 2005, the OVRDC District and Ohio were hit with a major flooding event, in which a Presidential Disaster Declaration was issued for 32 counties in Ohio, 3 of which are located in the OVRDC District. Local and incorporated communities that are part of the NFIP program must have a mitigation plan in effect to receive funds for future projects or disasters. In the OVRDC District, according to Ohio Department of Natural Resources in 2009, 52 communities had "CP" compliance with state standards and National Flood Insurance Program; only 9 communities that had "N" non-compliance status. Floodplain management has become a major focus in helping to control flooding in Ohio. The protection and management of the floodplains and the riparian zones are an important part in the planning process of forming predisaster mitigation plans for communities. With these plans in effect, communities will be better prepared for disasters and be able to recover faster after an event takes place.

Historically Significant Lands/Properties

The National Register of Historic Places has placed 250 sites within the OVRDC District on its list of sites of particular historic importance. Public lands in Ohio and the OVRDC District play an important role in the tourism industry. The Ohio Department of Natural Resources is the biggest public landowner in Ohio and the OVRDC District. Within the district, ODNR has 16 parks, 10 state forests, 13 nature preserves, and 42 wildlife areas and 6 lease control lands totaling 308,737.24 acres. In addition, the OVRDC District has public lands owned by Wayne National Forest, The Nature Conservancy, Ohio Historical Society, U.S. Park Service, and other smaller organizations with a total of 143,114.27 acres.

Population

Population

Over the last several years for the OVRDC District and Ohio, the population has increased. During 1990-2000, population grew twice as fast for the OVRDC District at 9.32% compared to Ohio at 4.67%, with Appalachian Ohio growing at 6%. The OVRDC District experienced a 29.3% increase in population from 1970-2000, which was greater than Ohio's. **(See Exhibit A)**

Migration

Migration into the OVRDC District has been greater than at the state level. During 1994-2007, the district experienced a net flow increase of 25,309 persons, while Ohio saw a net flow

decrease of 343,834 persons.

Selected Characteristics

The greatest decline by Age Groups was the 21-24 age group for both Ohio (9.4%) and the OVRDC District (0.2%). For Ohio, the median age rose from 33.3 in 1990 to 36.2 in 2000, with the OVRDC District median age changing from 33.4 to 36.4. The largest growth rate by age groups for the district is the 45-54 years at 34%, with the next age group being 55 to 59 years at 22.1%; while Ohio's age group of 45-54 years at 33.8% and 55-59 years at 13.6%. The district's senior population is growing faster than the State of Ohio.

During 1990-2000, the Hispanic race showed the largest increase for both the OVRDC District at 67.3% and Ohio at 43.4%. Another significant increase for Ohio has been Asian or Pacific Islanders at 39%. For the OVRDC District, Asian or Pacific Islanders, at 53.9%, is the second largest increase in minorities.

Estimates and Selected Characteristics

In 2008, the U.S. Census released population estimates for the country. The percent change between 2000 and 2008 shows the United States growing fastest at 7.45% exceeding OVRDC at 3.31% and Ohio at 1.06%. Additionally, it is estimated that the annual average percent change between 2000-2008 populations of minorities will increase faster for the OVRDC District at 3.3% compared to Ohio at 2.3%; the fastest growing group for minorities is Asians for OVRDC at 4.6% and Ohio at 3.6%.

Furthermore, other selected characteristics include the ratio male and female population. According to the U.S. Census, it is estimated from 2000-2008 that the annual average percent change in male population for OVRDC will be 0.27% and Ohio at .20%, while the female rate for OVRDC is .26% and Ohio at .09%.

Projections

The projected population growth for OVRDC is projected at 762,680 in 2030 while Ohio will be 12,317,610. While comparing the percent change between 2000 to 2030, OVRDC increased by 19.92% with Ohio at 8.5%. **(See Exhibit A)**

Economy

Economic Situation

The economic situation for the OVRDC District differs from county to county depending on several factors. According to the *Appalachian Regional Commission designation in 2010*, Pike and Vinton Counties are considered Distressed; Adams, Gallia, Jackson, Lawrence and Scioto are considered At-Risk; Brown, Highland and Ross are considered Transitional; and Clermont is considered Competitive. The *Economic Development Administration in 2009* lists all OVRDC counties, except Clermont, in some form of Area Distress, which helps to determine EDA funding.

Labor Force and Unemployment

Average unemployment for Ohio was 5.5% during 1991-2008, while the OVRDC District was higher at 6.7%. The unemployment dropped to the lowest level in 2006 with rates for OVRDC at 6.0, Ohio at 5.4 and the U.S. at 4.6. During 2007-2008, the unemployment rate grew for all

geographic levels. According to WARN Notices (Worker Adjustment Retraining Notification (WARN Act), from 2007 through August 2009, OVRDC lost 2,688 jobs from 11 companies downsizing or closing. In 2009, monthly unemployment rates continued to rise, with double digits for Ohio and the OVRDC District. According to Ohio Department of Job and Family Services, Ohio Labor Market Information, in January 2009, the unemployment rate for OVRDC was 11.1; with Ohio at 8.8; and the U.S. at 7.6. In July 2009, the unemployment rate was 11.2 for Ohio and 11.9 for the OVRDC District.

From the 2000 Census Summary File 3 Employment Report, over half of the labor force are women 16 and over, with total numbers for Ohio at 4,591,821 and OVRDC at 251,179. The male labor force, 16 and over, was 4,196,673 for Ohio and 237,743 for the OVRDC District. The labor force has increased over the last 11 years; 18.4% for the OVRDC District; 13.5% for the U.S. and 8.3% in the State of Ohio. The percentage of the civilian labor force employed was 55.7% for Ohio and 48.6% for OVRDC District. Total full and part time employment during 1994-2006 increased twice as fast for the OVRDC District at 27%, compared to Ohio at 11.3% and the U.S. at 14.6%.

Major Economic Sectors

Between 1990 and 2000, the economic sectors were reclassified by the U.S. Census Bureau and by the Bureau of Economic Analysis. The breakdown of the following sectors is lagging because the latest data available is from 2006 from the U.S. Census - County Business Patterns and Bureau of Economic Analysis. This information does not reflect the current economic recession downturn, but does show the potential of the OVRDC District compared to Ohio and the U.S.

All Economic Sectors

According to the 1990 and 2000 Census, the OVRDC District saw an increase in the number employed by 19.7%. This is twice the level of the State of Ohio at 9.5%, and OVRDC is higher still than the national level at 12.1% during 1990 – 2000. According to *Bureau of Economic Analysis*, from 2001-2006, the percent change in the total number employed was the greatest for the OVRDC District at 7.8% with U.S. at 6.8% and Ohio at 2%. According to the *County Business Patterns*, the percent of average annual salary during 1998-2006 grown slower for OVRDC at 12.8%, compared to the U.S. at 26.1% and Ohio at 22.4%. OVRDC at 5.4% and the U.S at 10.4% have experienced a gain in the number of employees according to the *County Business Patterns* 1998-2006 compared to a slight gain for Ohio at .4%.

Manufacturing

According to *County Business Patterns* for 1998 to 2006, the average annual salary for manufacturing increased slower for the OVRDC District at 7.6% compared to an increase for Ohio at 19.4% and U.S. at 23.8%. According to the *County Indicators 2006*, manufacturing employment from 1994-2006 decreased faster for Ohio at 23.7%, compared to U.S. at 22.1% and the OVRDC District at 14%. According to *Bureau of Economic Analysis*, this trend was the same for 2001-2006, the percent change in the number employed which was the greatest for Ohio at 15.8% and the U.S. at 15.2% compared to a loss of 13.1% for the OVRDC District.

Construction

According to the 1990 and 2000 Census, the percentage change of the number employed has increased faster for the OVRDC District at 35.8% compared to Ohio at 27.7% and US at 22%.

There was a change in this sector in 2006, according to the *County Business Patterns* for 1998 to 2006, Mid-March Employment (1998-2006) increased faster for the U.S. at 23.8% compared to OVRDC at 1.7% while compared to a drop for Ohio at 1.8%. In addition, the percent change in the average annual salary for construction increased faster for the U.S. at 24.7% compared to the growth of Ohio at 20.9% and the OVRDC at 10.2%. According to *Bureau of Economic Analysis*, this trend is the reverse for OVRDC, with a loss at 1.2% and gain for Ohio at 8.5% and the U.S. at 17.6% during 2001-2006 in job numbers.

Wholesale Trade

According to the *County Business Patterns* for 1998 to 2006, the percent change in the average annual salary increased slower for OVRDC at 6.8%, while Ohio jumped to 27.6%, and the U.S. at 30.1%. Nevertheless, Mid-March Employment is down for Ohio at -6.8% compared to a slight increase for the nation at 2.5% and OVRDC at 0.8%. According to *Bureau of Economic Analysis*, for 2001-2006, the percent change in the number employed, which decreased for Ohio at 1.1% compared to an increase for OVRDC at 4.6% and U.S. at 4.1%.

Retail Trade

According to the *County Business Patterns* for 1998 to 2006, the percent change of the average annual salary increased for OVRDC at 5.9% compared to a huge gain for Ohio at 20.4%. In addition, there has been an increase in the Mid-March Employment 1998-2006 for OVRDC at 1.16% and for the U.S. at 10.2% compared to a decrease for Ohio at 3.8%. According to *Bureau of Economic Analysis*, for 2001-2006, the percent change in the number employed which was the greatest for OVRDC 6.1% and U.S. at 3.6%, compared to a loss of 4.3% for Ohio.

Educational, health, and social services

According to the 1990 and 2000 Census, the percentage change of the number employed in these sectors for OVRDC at 38.1% increased compared to Ohio at 22.1% growth level, and the U.S. at 33.8%. According to *Bureau of Economic Analysis*, the percent change in the number employed for the Education Service 2001-2006 relative equal growth for the OVRDC District at 23.6%, Ohio at 22.2%, and U.S. at 21%. In addition, according to the *County Business Patterns* for 1998 to 2006, for healthcare and social services average annual salary increases have lagged behind for the OVRDC District at 14.5% compared to Ohio at 25% and the U.S. at 27.9%. Furthermore, Mid-March Employment for the same time increased faster for the OVRDC District at 21.8% compared to Ohio at 15%. According to *Bureau of Economic Analysis*, this trend is the same for 2001-2006; the percent change in the number employed which for healthcare and social services was the greatest for OVRDC at 18% compared to an Ohio at 11.7%.

Agriculture

According to *Bureau of Economic Analysis*, during 2001-2006 the percent change in number employed has decreased faster for the U.S. at 6.2% compared a smaller decrease for Ohio at 3.7% and OVRDC at 3.4%. According to the *1987-2007 Agricultural Census*, the number of farms have increased in OVRDC at 6.5%, while in Ohio they have decreased by 4.6%.

OVRDC 2010 CEDS Performance Report

Additionally according to the *1987-2007 Agricultural Census*, the average size of the farm has decreased for Ohio at 2.3% and OVRDC at 14.3%. In addition, the number of acres of farmland has decreased from 1,803,047 acres in 1987 to 1,714,770 acres in 2007 for the OVRDC District.

The percent decrease for the OVRDC District was 5% and Ohio at 7.2% from 1987 to 2007. According to *Annual Agriculture Report, Ohio Department of Agriculture* for 1999-2006, the percent change in cash receipts per farm increased for both Ohio at 26.8% and the OVRDC District at 24.5%. Also, according to *2002-2007 Agricultural Census*, market value of agricultural products sold increased for the OVRDC District at 51% and Ohio at 65.8%.

Businesses

According to *Ohio County Indicators*, the number of active businesses increased for Ohio at 6.5% compared to the OVRDC District at 2.5% from 1993-2007. According to *Ohio County Indicators*, the rate for business starts during 1996-2009 was lower for OVRDC at 114.6 compared to Ohio at 116.8. The *Ohio Department of Development, Office of Strategic Research* annually compiles a database on the announced business expansions and attractions, called the *Ohio Private Investment List*. During 2005-2008, there were 98 projects in the OVRDC District totaling 4,723 jobs with an investment of \$1,862,137,000. From the 98 projects, 37 were new plants and 61 expansions to current buildings. During 2005-2008 for Ohio, there were 2,178 projects with 93,690 jobs created and an investment of \$32,981,057,000.

Commuting

The majority of the workforce in the OVRDC District commutes to work at an average of 29.4 minutes in 2000, while Ohio is below this at 22.9 minutes. The method of commuting patterns varied greatly in 2000. For the OVRDC District, 81.7% of the population drove alone compared to Ohio at 82.8%. Public transport was 0.6% for OVRDC compared to Ohio at 2.1%.

Housing

During 1990-2000, the percent change in the total number of households was greater for the OVRDC District at 29.8% compared to Ohio at 14.8%. During 1980-2000, the OVRDC District at 24.9% has seen a greater percentage increase in growth in the number of housing units compared to the State of Ohio figures at 21.9%. OVRDC had a greater percentage change 16.6% overall compared to Ohio at 10.8%. For the same period, the rental percentage change for OVRDC was 6.5% compared to Ohio's percentage of 3.2%. Homeowner vacancy rate for Ohio increased by 20.7% in this same timeframe, which was higher than OVRDC's growth rate of only 9%, but the rental vacancy rate was reversed with the district's increase at 27.2% when compared to Ohio's increase of only 10.1%.

According to the U.S. Census 2000-2008 the increase in number of estimated housing units for the OVRDC District at 5.5% has grown slightly slower than Ohio at 5.6% but was under the increase for the U.S. at 9.9%. After the collapse of the housing market around 2006-2007 new homes are still being built, but there has been a downturn in number of new housing units

authorized by building permits for both Ohio at -44.7% and OVRDC at -14.7% for 1998-2007, according to the *U.S. Census Building Permits Survey*. The number of sales reported in the "*Residential Sales Data by County and Jurisdiction*" between 2005-2008 the percent change for residential sales of homes has decreased for both Ohio at -29.5% and OVRDC at -18.5% while

the median sales price has slightly increased for both Ohio at 0.86% and OVRDC at 3.4%.

According to foreclosure data from *Ohio Secretary of State -- Better Lives, Better Ohio* -- by RealtyTrac, according to the data between 2006-2008 percent change in foreclosures increased faster for OVRDC at 102.9% compared to Ohio at 83.6%. For OVRDC in 2006 there was 1,332 foreclosures which increased to 4,088 in 2008, Ohio had 113,570 foreclosures in 2008. Another source for foreclosure data was The Supreme Court of Ohio, which had a list of new foreclosure filings for 2004-2008. Courts across Ohio 2008 reported 85,773 new foreclosure filings, marking the 13th consecutive annual increase, with the OVRDC District reporting 3,823 new foreclosure filings. The percent change in new foreclosure filings from 2004 to 2008 was higher for Ohio at 45.3% compared to OVRDC at 37.4%

Income

From the 2000 Census Summary File 3 income data, the median household income increased 9.9% for Ohio during 1990-2000, for the U.S. it was 7.7% and for the OVRDC District 18.7%. The median household income for the OVRDC District was \$31,155, while Ohio was \$40,956 and the U.S. was \$41,994. The percent change in the per capita income during 1990-2000 registered for the U.S. was 15.3%, Ohio was 20.2%, and OVRDC District was 27.5%. The per capita income value for the district is still below the national and state levels in 2000 (\$16,335 for OVRDC District, \$21,003 for Ohio, and \$21,587 for the U.S.).

According to the *Bureau of Economic Analysis, Regional Economic Information System*, personal per capita income growth from 1995-2006 for the OVRDC District at 56.3% was faster than Ohio at 46.2% but the rate was the highest for U.S. at 57.9%. However, in 2006 the personal per capita income was much lower for the OVRDC District at \$24,914 compared to Ohio at \$33,320 and U.S. at \$36,714. According to U.S. Census, *Small Area Income and Poverty Estimates (SAIPE)* for 2001-2007 the percent change in median household income increased faster for the OVRDC District at 17.6% compared to Ohio at 11.1%, and the U.S. at 18.6% grew the fastest over this time frame. However, in 2007 the median household income was much lower for OVRDC at \$37,230 compared to Ohio at \$46,645 and the U.S. at \$50,740.

Poverty

From the 2000 Census Summary File 3 of the poverty data, the percent of families below the poverty level improved for Ohio from 9.7% in 1990 to 7.8% in 2000, while the OVRDC District experienced a decrease from 17.6% to 11.7%. The individual percentage poverty levels have also improved for Ohio from 12.5 % in 1990 to 10.6% in 2000 and for OVRDC from 20.7% to 15.1%. The poverty level for children 18 years and under has improved from 1990-2000, with Ohio decreasing from 17.8% to 14% and OVRDC falling from 27.5% to 19.7%.

According the table below the U.S. Census, *Small Area Income and Poverty Estimates (SAIPE)* for 2001-2007 the percent change in poverty estimated for all ages increased for Ohio at 24%, OVRDC District at 17.5% and the U.S. at 14.3%. However, the estimated poverty rate for all ages in 2007 was the highest for the OVRDC District at 18% compared to Ohio at 13.1% and the U.S. at 13%. The poverty rate for ages 18 and under was higher for the OVRDC District at 26.5% compared to Ohio at 18.4% and the U.S. at 18%.

Environmental Infrastructure

Water Supply and Distribution

According to the 2005 OVRDC Survey of Waste Water Treatment Facilities and Water Facilities, the district contains 80 water facilities. It should be noted that many public and private water systems rely on wells in the Ohio and Scioto River Valleys. District water is supplied through ground water and surface water from the Ohio River Main Stem, the Scioto River Basin, and the Little Miami River Basin, as well as various rivers, streams, wells and lakes. Over the last decade, OVRDC has continued to provide assistance to the improvement and development of water treatment and water line extensions.

Sewage Collection and Treatment

Wastewater treatment in the district is provided by both centralized collection/treatment facilities and septic systems. Of the centralized systems, which are typically owned and operated by municipalities, the most frequently used treatment types include contact stabilization, chlorination, filters, and settling. According to the 2005 OVRDC Survey of Waste Water Treatment Facilities and Water Facilities, it has been determined that the district contains seventy-one public wastewater treatment facilities that include over 112,216 total service connections at the present time.

Selected Non-Linear Infrastructure

Health Services and Facilities

Basic primary-care health facilities are available in most counties; however, health care professionals and health services are still in short supply in many areas of the district. Short-term medical and surgical services are provided to area residents through the 12 hospital facilities located throughout the district in 2008. According to ODOD *Office of Strategic Research 2002-2008 County Profiles* there has been percent increase in the number of doctors for the OVRDC District at 8.9% compared to a decrease for Ohio of 22.7%. According to ODOD *Office of Strategic Research 2002-2008 County Profiles* there has been percent increase in the number nursing homes for the OVRDC District at 104.6% and Ohio at 95.1% with an increase in the number of licensed residential care units for Ohio at 120.8% and OVRDC at 94.4%. In 2008, long-term care is provided for aging residents, and others who might require such care, through the 135 rest and nursing homes scattered throughout the district.

In 2004, OVRDC at 14.2% had a higher percent of its population that did not have health insurance, while Ohio had only 12.7%. Additionally, in 2004, children uninsured is higher for the OVRDC District at 6.5% compared to Ohio at 5.45%. Furthermore, in 2004, the OVRDC District at 54.35% of adults with employer-based insurance was lower than Ohio at 62.55%. Finally, in 2004, more people in the OVRDC District, 21%, are on Medicaid compared to only 12% for Ohio.

Education

Education in Ohio is mandatory to the age of 16. Educational service providers in the OVRDC District include 56 public schools districts, 27 private and parochial schools, seven joint vocational schools, and five colleges and universities in 2008. According to the *Ohio County Profiles*, percent change in the number of students in 2002 to 2008 decrease slower of OVRDC at 0.2% compared to Ohio at 3%. During this same time, the percent change in teacher ratio to

students change by 14.2% for OVRDC and 25.7% for Ohio. Additionally, the percent in funding per student has increased by 30.5% for the OVRDC District and 25.7% for Ohio. In 2009, the state average was higher for the expenditures per pupil with Ohio at \$ 9,587 compared to OVRDC at \$ 8,677. Finally, the percent change in the graduation rate has increased faster for OVRDC District at 11.8% compared to Ohio at 7%.

From the 2000 Census Summary File 3 of education attainment, the percent of people having a high school degree or higher has increased over the past 10 years for Ohio from 75.7% in 1990 to 83% in 2000 and for the OVRDC District from 64.2% to 74.5%. There has been an increase in the percent of people having a bachelor's degree or higher in the last ten years (1990-2000) for Ohio (from 17.1% to 21.1%) as well as the OVRDC District (from 8.4% to 10.6%). (See **Exhibit G**)

Telecommunications

In the last decade, there has been an increase in the focus on technology for Ohio and the Appalachian Region of Ohio. Over the last couple of years, there has been a focus on broadband connections. In Ohio, there is a program called "Connect Ohio" that is the driving force behind the development of broadband connections in the state. In 2008-2009, Ohio Valley Regional Development Commission supported an initiative called Connecting Appalachia. Under this program, there were four main projects:

1. Southern Ohio Health Care Network Fiber Optic Backbone
2. Broadband Coverage of the Rural Expanse
3. World Class Connectivity for Industrial Parks
4. Telemedicine Initiative

Economic Cluster Analysis

The Economic Development Administration (EDA) requires that an "economic cluster analysis" be included in each Economic Development District's Comprehensive Economic Development Strategy (CEDS). According to the EDA, industry clusters are concentrations of competing, complementary, or interdependent firms and industries that do business with each other and/or have common needs for talent, technology, and infrastructure (EDA website).

The following are traditional and emerging clusters to note in the OVRDC District. These clusters are not the only economic groupings in the district, but were selected due to their prominence, employment concentration factor, economic prosperity factor, export-oriented, need of support, or opportunity for facilitation. It is very important to note that this is only a summary report of the economic cluster analysis for the district. The clusters identified were:

- Agriculture Related Businesses
- Healthcare Related Businesses
- Wood Industry and Related Businesses
- Total Manufacturing Sector

Table 1: OVRDC Economic Clusters Analysis						
Businesses that have 10 or more employees	Number of Businesses	Total Employment	Total Sales Volume	Average Sales Volume per Business	Percent of Business for OVRDC	Percent of Employed for OVRDC
Agriculture Related Businesses	24	649	\$268,018,000	\$412,971	0.71	0.44
Healthcare Related Businesses	344	25,986	\$3,109,697,000	\$119,668	10.16	17.62
Wood Industry and Related Businesses	56	7,329	\$2,109,892,000	\$287,883	1.65	4.97
Total Manufacturing Sector	272	26,509	\$9,836,005,000	\$371,044	8.03	17.97
Freight and Transportation Related Businesses	72	3,178	\$348,932,000	\$109,796	2.13	2.15
All OVRDC Businesses	3,386	147,486	\$27,207,779,000	\$184,477	100.00	100.00

Note: Agriculture Related Businesses, Healthcare Related Businesses, and Wood Industry and Related Businesses includes businesses from the Total Manufacturing Sector because the nature of the products produced.

Source: Business data list purchased by OVRDC from March 2008 from InfoUSA. All businesses that have 10 employees or more.

Analysis by JG OVRDC Data and GIS/GPS Mapping Center

Table 1: OVRDC Economic Cluster Analysis

Table 1: OVRDC Economic Cluster Analysis, depicts the breakdown of each cluster from the database that identifies the number of establishments, total number employed, total sales volume (information was available for majority of companies), average sales volume per company and percent of business and employed for the OVRDC District.

Agriculture Related Businesses

According to *Table 1: OVRDC Economic Cluster Analysis*, there are 24 agriculture related businesses within the OVRDC District, which caters to the farm industry. This cluster employed over 649 people with over \$261 million in total sales volume. This accounted for only a fraction of a percent compared to the overall amount for the OVRDC District. These companies directly or indirectly support agricultural businesses and services in the district. The reason that this industry cluster was identified was that its major land resource prominence, export-oriented, need of support, and opportunity for facilitation. According to the U.S. Department of Agriculture, there were 10,502 farms located in the district in 2007. The majority of farmland is located in the western to northwestern portion of the district. According to *U.S Department of Agriculture*, total market value of agricultural products sold for the OVRDC District at 51% has nearly double in 2002 over 2007, compared with Ohio at 61.8%. The market value of agricultural products sold - Crops (\$1,000) has increase for both the OVRDC District at 61.7% and Ohio at 78%. While overall income for farming has increased for the district at 22%, the costs of running the farms has increased faster at 34%. Corn, soybeans, wheat, potatoes, tobacco, cattle, pigs, goats, sheep, and poultry are the main commodities produced in the district.

Healthcare Related Businesses

According to *Table 1: OVRDC Economic Cluster Analysis*, 344 healthcare related businesses have 10 or more employees within the OVRDC District that employ 25,986 people. Healthcare related businesses make up around 10% of the overall businesses within the region, employing 17.6% of the labor force. The reason that this industry cluster was identified was that its

OVRDC 2010 CEDS Performance Report

prominence, employment concentration factor, and the economic prosperity factor. According to the *County Business Patterns* for 2006, the percent of the labor force for healthcare and social services was the greatest for the OVRDC District at 18% compared to Ohio at 15% and US at 14%.

Wood Industry and Related Businesses

According to *Table 1: OVRDC Economic Cluster Analysis*, there are 56 Wood Industry and related businesses that have 10 or more employees within the OVRDC District that employ 7,329 people. Through the Wood Industry and related businesses cluster accounts for only 1.65% of businesses with 10 or more employees in the OVRDC District, its total sales volume at \$2.109 billion accounts for 7.8% in the OVRDC District. The reason that this industry cluster was identified was that its land resource prominence, export-oriented, need of support, or opportunity for facilitation.

Total Manufacturing Sector

According to *Table 1: OVRDC Economic Cluster Analysis*, there is a total of 272 Total Manufacturing Sector that have 10 or more employees within the OVRDC District that employ 26,509 people. The Total Manufacturing Sector cluster accounts for nearly 8% of businesses with 10 or more employees in the OVRDC District, its total sales volume at \$9.836 billion accounts for 36.2% in the OVRDC District. The reason that this industry cluster was identified was its prominence, employment concentration factor, economic prosperity factor, export-oriented, need of support, and opportunity for facilitation. Through there are several sub-clusters within the Total Manufacturing Sector, they all rely on resources and infrastructure needs within the district. According to the *County Business Patterns* for 2006, the percent of the labor force for manufacturing sector was the greatest for the OVRDC District at 18.2% compared to Ohio at 16.3% and U.S. at 11.3%.

Past EDA Investments

From 1966 to 2010, EDA has invested in 132 projects totaling \$80,694,864 in the OVRDC District. Listed below is a list of these past EDA Projects.

Applicant	Project Name	Year	Amount of Grant
Village of Manchester	Sewer System	1966	\$415,000
Village of Winchester	Sewage Treatment Plant	1966	\$2,000
Village of Georgetown	Water System Improvement	1966	\$1,000
Village of Batavia	Water System	1966	\$246,000
Clermont County Commissioners	Water System	1966	\$976,000
Gallipolis	Water Line Extension	1966	\$114,000
Wellston	Water System	1966	\$1,207,000
Village of Peebles	Sewer System Extension	1967	\$44,000
Village of Winchester	Sewage Treatment Plant	1967	\$28,000
Clermont County Commissioners	Water Distribution System	1967	\$965,000
Waverly	Water System	1967	\$219,000
Portsmouth	Sewage Treatment Plant	1967	\$96,000

OVRDC 2010 CEDS Performance Report

Scioto County Commissioners	Rosemount Sewer Collection & Treatment	1967	\$306,000
Regional Water Company	Water Supply System	1968	\$1,404,000
Huntington CIC	Balcony Hills Resort Planning	1968	\$29,000
Village of Ripley	Sewer Collection System	1968	\$486,000
Village of Batavia	Sewer System Treatment Plant	1968	\$2,527,000
Village of Batavia	Goshen- Miami Township Waste Treatment Plant & Collection	1968	\$415,000
Franklin Township	Sewer System Treatment Plant	1968	\$268,000
Village of Rio Grande	Water & Sewer System	1968	\$176,000
Jackson County	Sewer System Improvement	1968	\$740,000
Jackson County Water Co.	Water Works Improvements	1968	\$710,000
Village of Georgetown	New Waste Treatment Plant	1969	\$148,000
Village of Georgetown	Sewer Improvements	1969	\$754,000
Oak Hill	Water Works Improvements	1969	\$353,000
Village of Coal Grove	Water System Improvements	1969	\$358,000
Portsmouth	Water Treatment Plant Expansion	1969	\$1,539,000
Gallipolis	Sanitary Sewer Extension	1970	\$811,000
Chillicothe	Industrial Park Water Main	1970	\$1,142,000
Scioto County Commissioners	Rosemount Sewer Collection & Treatment	1970	\$194,000
Clermont County Commissioners	Water System Improvements	1971	\$632,000
Gallia County Commissioners	Watershed- Flood Control	1971	\$3,000
Waverly	Water- Sewage Treatment Plant Improvements	1971	\$152,000
Ross Co. CIC	Industrial Site Study	1971	\$10,000
Portsmouth	Industrial Site Survey	1971	\$7,000
Adams County	Courthouse/ Add Jail	1972	\$240,000
Village of Winchester	Sewage Treatment Plant	1972	\$4,000
Clermont County Commissioners	Sewage Collection System	1972	\$807,000
Loveland	Community Bldg. Fire Station	1972	\$469,000
Lawrence County Commissioners	New County Jail	1972	\$533,000
Chillicothe	Storm, Sanitary Sewers & Water Line	1972	\$292,000
The Scioto Society	Amphitheater Construction	1972	\$342,000
The Scioto Society	Amphitheater Construction	1972	\$44,000
Village of Mt. Orab	Water System Additions	1973	\$270,000
Loveland	Community Bldg. Fire Station	1973	\$78,000
Gallipolis	Water Treatment Storage Supply	1974	\$1,721,000
Scioto County Commissioners	Portsmouth Industrial Park	1974	\$1,225,000
Adams County	Highway Bridge Repair	1975	\$100,000
Clermont County Commissioners	County Office Building	1975	\$200,000
Loveland	Water System Expansion	1975	\$953,000
Portsmouth	Riverfront Reclamation	1975	\$236,000

OVRDC 2010 CEDS Performance Report

Village of West Union	Sewage Collection System Improvements	1976	\$2,377,000
West Clermont Local School Dist.	Addition to Glen Este High School	1976	\$3,104,881
Lawrence County Commissioners	Annex to County Courthouse 3 Floors	1976	\$2,460,290
Lawrence County Commissioners	Courthouse Addition	1976	\$2,460,290
Scioto County	Expand Mercy Hospital Emergency Room/Out-Patient	1976	\$1,292,461
Scioto County	Harrison Township Road Link	1976	\$171,789
Scioto County Commissioners	Economic Adjustment Strategy Employment Cutback	1976	\$50,000
Shawnee State Comm. College	Activity Board Institutional	1976	\$250,000
Village of Aberdeen	Water & Sewer Improvements	1977	\$238,000
Village of Georgetown	Fire Station	1977	\$283,000
Highway Dept.	Office Bldg. Improvements	1977	\$138,000
Village of Ripley	Fire Station Additions	1977	\$92,000
Village of Rio Grande	Water Storage Tank	1977	\$158,520
Jackson County	Wastewater Treatment Plans Expansion	1977	\$89,000
Jackson County Commissioners	Jail & Public Service Building	1977	\$125,000
Jackson School District	Multi-purpose Addition to Elementary School	1977	\$89,000
Wellston	Multi-purpose Community Building	1977	\$240,000
Wellston School District	Renovation of High School	1977	\$240,000
Village of Piketon	Sanitary Sewers & Well	1977	\$1,098,380
Chillicothe	Sewer Line to Flint Kote	1977	\$103,100
Chillicothe	Sewers, lift Stations	1977	\$353,000
Chillicothe	Streets & Storm Sewers	1977	\$187,700
Chillicothe School District	Girls' Gym- High School	1977	\$200,000
County Board of Education	Additions to Elda Elementary School	1977	\$170,000
Ross County	Courthouse Enlargement	1977	\$212,000
Ross County Commissioners	Courthouse Expansion	1977	\$212,000
Minford School District	Elementary School Construction	1977	\$151,000
Village of New Boston	Public Safety Building Construction	1977	\$432,000
Porter Township	Community Service Building	1977	\$582,000
Portsmouth	Improvement of Greenlawn Cemetery	1977	\$163,000
Portsmouth	Mildale- Dunlap Sewer	1977	\$315,000
Portsmouth	Receiving Hospital	1977	\$1,009,225
Portsmouth	Repair Sunrise Reservoir	1977	\$1,209,000
Portsmouth City Schools	Alteration & Energy Conservation	1977	\$180,000
Scioto County	Shawnee State Forest Bridge	1977	\$115,500
Scioto County Commissioners	Administration Strategy Program Title IX	1977	\$46,000
Vinton County Commissioners	County Road & Bridge	1977	\$167,625
Scioto County Commissioners	Energy Conservation Courthouse	1978	\$169,600

OVRDC 2010 CEDS Performance Report

Scioto County Commissioners	Replace Jobs Lost by Closing of the Steel/Shoe Plant	1978	\$740,000
SEDC	Capacity Grant	1978	\$85,000
SEDC	Stimulate Industrial/ Commercial Growth	1979	\$800,000
OVRDC/PWIP Grant	7 Localities/energy conservation	1980	\$365,000
Scioto County	Economic Adjustment RLF	1980	\$3,250,000
Scioto County	Franklin Furnace Wastewater Treatment Plant	1981	\$363,200
Waverly (PWIP)	Water Tower Construction	1983	\$628,000
Greenfield	Wastewater Treatment Plant Improvements	1984	\$1,140,000
OVRDC	Title IX RLF	1986	\$330,000
OVRDC	Title IX SSED (GCEP)	1986	\$150,000
OVRDC	Market, Research & Dev. Study-Hardwood Panel Industry in So. Ohio	1987	\$27,000
OVRDC	Alternate Use Study for closing Basic Industry	1987	\$25,000
Lawrence Co. Chamber of Comm.	Procurement Outreach Center	1987	\$64,000
OVRDC	Community Alternative Use Planning & Marketing Program & Process	1988	\$75,000
Fayette County	YUS Corporation Water & Sewer Line Extension	1988	\$350,000
Lawrence County Commissioners	Ohio Valley Incubator	1989	\$287,000
Chillicothe	Chillicothe Water System	1989	\$1,500,000
Vinton County Water Company	Water Supply & Distribution System	1989	\$310,000
Village of Williamsburg	Williamsburg 200,000 Gallon Water Tower	1990	\$180,000
Jackson	Alu Chem Rail Expansion	1991	\$633,922
Fayette County	Water Improvements to Outlet Mall Development	1993	\$868,000
Ross County	Ross County Colomet Industrial Park	1994	\$700,000
Brown County	Village of Ripley SSED Title IX	1995	\$25,000
Jackson County	Luigino's/Jackson WWTP Improvement	1995	\$1,130,000
Gallia County	Gallia County Industrial Park Sewer	1996	\$1,090,000
OVRDC District	Economic Recovery Coordinator	1997	\$75,000
Scioto County	New Boston Industrial Park Access Rd	1997	\$582,000
Jackson	State Route 93 Alternative Access Road	1998	\$399,150
Pike Co. CAO	Zahns Corner Industrial Park	1998	\$1,370,760
Vinton County Commissioners	Vinton County Industrial Park	1999	\$840,000
Village of Mt. Orab	Brooks-Mallott Rd. Improvements and Sewer Extension	2000	\$375,000
Chillicothe	WWTP Upgrade	2000	\$1,392,000

OVRDC 2010 CEDS Performance Report

Vinton County Commissioners	Vinton County Industrial Park	2000	\$192,000
Highland County	Leesburg Industrial Park	2001	\$562,000
The Ohio State University	Endeavor Center Business Incubator	2001	\$1,920,000
Adams County	Measley Ridge Road Restructuring	2002	\$500,000
Lawrence Econ. Dev. Corp.	Lawrence Co. "The Point" Industrial Park Dev.-Phase 1	2002	\$1,570,000
Village of Jeffersonville	Wastewater Treatment Upgrade	2003	\$1,400,000
City of Jackson	Wastewater Treatment Plant Upgrade	2005	\$2,300,000
Fayette County	Madison Mills Water Project	2007	\$2,400,000
Clinton, Fayette and Highland Counties	Tri-County Economic Adjustment Planning	2008	\$150,000
Clinton, Fayette and Highland Counties	Tri-County Economic Adjustment Planning	2009	\$150,000
Pike County	Pike Manufacturing	2010	\$2,042,991
Total			\$80,694,864
Source: Ohio Valley Regional Development Commission			

*Community &
Private
Sector
Participation
in CEDS*

C
H
A
P
T
E
R

2

Chapter 2: Community and Private Sector Participation in CEDS

OVRDC Full Commission

Community and private sector participation in the Ohio Valley Regional Development Commission's (OVRDC's) Comprehensive Economic Development Strategy (CEDS) process comes through many channels but really starts with the OVRDC membership (**see Exhibit B**), commonly referred to as the "Full Commission". OVRDC is a 12-county membership organization that includes elected officials from various levels of government, private sector representatives, chambers of commerce representatives, human service organization representatives, local planning commission representatives, post-secondary education/labor organization/workforce development board representatives, and minority representatives from each of the twelve member counties. The Full Commission includes a total of 175 members from the twelve member counties. In addition to these members; there are also committees such as the Project Review Committee (**see Exhibit B**) and Revolving Loan Fund Committee (**see Exhibit B**) that include economic development and financial institution professionals, both of which provide significant input into OVRDC investments in the region.

Each county's membership in the OVRDC Full Commission is called the County Caucus. The twelve County Caucuses function as the basic local participation mechanism for the OVRDC, including initial formulation of all OVRDC plans, projects, goals, and priorities. Therefore, each county caucus provides input into the development of the Comprehensive Economic Development Strategy (CEDS). The County Caucuses serve as the local committee which annually compiles, revises, and prioritizes a package of county development projects, which are meant to meet the development needs of the county and its local subdivisions. As part of this role, the county caucus also annually prioritizes potential Appalachian Regional Commission (ARC) and Economic Development Administration (EDA) eligible projects (**see Exhibit C**). These top priority projects identified are those which OVRDC staff will focus its technical assistance in planning and financial packaging during the next year.

Caucus meetings are open to the public, and participation by citizens and various economic and community development organizations, which may or may not be a member, is strongly encouraged. The broader the representation in each county, the more we can be assured that we are addressing the major development needs of the county.

The twelve member counties actively support and currently participate in the Economic Development District (EDD) activities of the OVRDC. The 12 member counties during 2010 invested \$112,011 of local funds based on the 2008 population estimates (658,889) at seventeen cents per capita. The investment from the counties for 2011 will be \$112,004 based on the 2009 population estimates (658,839) at seventeen cents per capita. Copies of the 2011 adopted resolutions from the members are included (**see Exhibit D**).

OVRDC 2010 CEDS Performance Report

OVRDC Executive Committee

On behalf of the 175-member OVRDC Full Commission, the OVRDC Executive Committee is responsible, among other duties, to review and give final approval of the CEDS. The OVRDC staff develops the document with input from the County Caucuses and the CEDS Committee before having it approved by the Executive Committee. OVRDC's Executive Committee includes local elected officials from each county, private sector representatives, a minority representative, and several members-at large that represent one of the following areas: chambers of commerce, workforce development, labor, or post-secondary education. The main function of the Executive Committee is to coordinate the day-to-day operations of OVRDC.

During the last several years, OVRDC has strengthened its coordination and working relationship with other major development agencies by expanding the ex-officio membership of our Executive Committee. We have included representatives of the following agencies: Economic Development Administration, Governor's Office of Appalachia, Ohio Department of Development, Ohio Department of Transportation, USDA/Rural Development, regional resource conservation agencies, congressional offices, and state representatives. Our monthly Executive Committee meetings regularly include representatives from USDA/Rural Development, Congressional offices, and the Governor's Regional Economic Development Office.

OVRDC Executive Committee

Member	County	OVRDC Office/Seat
Roger Rhonemus	Adams	Vice-Chairman/Caucus Chair
Debora Plymail	Adams	Member-At-Large
Margery Paeltz	Brown	Caucus Chair
Ben Houser	Brown	Private Sector Rep.
Bob Proud	Clermont	Chairman/Caucus Chair
Ken Morrison	Clermont	Member-At-Large
Jack DeWeese	Fayette	Caucus Chair
Doug Marine	Fayette	Private Sector Rep.
Joe Foster	Gallia	Caucus Chair
Lori Neal	Gallia	Member-At-Large
Gary Heaton	Highland	Caucus Chair
Charles Stevens	Highland	Private Sector Rep.
Tom Walton	Jackson	Caucus Chair
Rick McNelly	Jackson	Private Sector Rep.
Les Boggs	Lawrence	Caucus Chair
Rick Griffith	Lawrence	Private Sector Rep.
Harry Rider	Pike	Caucus Chair

OVRDC 2010 CEDS Performance Report

Roger Kemper	Pike	Private Sector
Doug Corcoran	Ross	Treasurer/Caucus Chair
Joseph P. Sulzer	Ross	Mayor of Chillicothe
Tom White	Ross	Private Sector Rep.
Mike Crabtree	Scioto	Caucus Chair
Jane Murray	Scioto	Mayor of Portsmouth
Gary Coleman	Scioto	Member-At-Large
Eugene Collins, Sr.	Scioto	Minority Representative
Tom Morgan	Vinton	Caucus Chair
Rick Reynolds	Vinton	Member-At-Large

OVRDC CEDS Committee

Recent revisions to OVRDC's by-laws, which were necessary to comply with EDA's new regulations, have created a separate CEDS Committee for OVRDC. The new OVRDC by-laws went into effect on October 1, 2006 and the CEDS Committee was appointed by the Chairman of OVRDC at the March 2007 meeting of the Full Commission. The CEDS Committee consists of 23 members as follows: the OVRDC Vice-Chairman, 12 private sector members, 5 public officials, 1 minority member, and 4 members-at-large. The 2010 CEDS has been developed by OVRDC staff in conjunction with the CEDS Committee and the County Caucuses. The CEDS Committee presented the document for approval by the Executive Committee in November 2010. The completed 2010 CEDS Performance Report was sent to the EDA Chicago Regional Office in December 2010.

OVRDC CEDS Committee (Strategy Committee)

Name	Organization	Representing
Roger Rhonemus, CEDS Committee Chairman	Adams County Commissioners	County government
G.H. "Harty" Wallingford	G.H. Wallingford Company	Private Sector
Ben Houser	H & G Nursing Homes	Private Sector
Tim Ross	Innerwood & Company, LLC	Private Sector
Doug Marine	Doug Marine Motors	Private Sector
Tracy Stewart Call	Farmers Bank	Private Sector
Charles Stevens	Stevens Trustworthy Hardware	Private Sector
Rick McNelly	McNelly and Gahm Insurance	Private Sector
Rick Griffith	McGinnis, Inc.	Private Sector
Robert Matthey	Ohio Valley Electric Corporation	Private Sector
Tom White	Accurate Heating and Cooling	Private Sector
Don Hadsell	J & H Erectors	Private Sector
Andy Adelman	Adelman & Clark	Private Sector

OVRDC 2010 CEDS Performance Report

Mal Payne	Chillicothe Correctional Institution	Minority community
Brett Boothe	Gallia County Engineer's Office	County government
Joe Denen	City of Washington Court House	City government
Dave Kennedy	Village of New Richmond	Village government
Jack Webb	President, Jackson Co. Trustees	Township government
Mike Bledsoe	Vinton County Commissioners	County government
Dr. Kevin Boys	Southern State Community College	Post-secondary Education
Jewell Hackworth	WIA Director, Lawrence Co.	Workforce Development
Sharon Manson	Pike County Visitor's Bureau	Community Leaders
Gary Coleman	Laborer's Local #83	Organized Labor

OVRDC Staff

OVRDC has a professional staff of 10 with expertise in general economic and community development planning and enhancement; as well as staff that have specialized planning skills to support the culmination of the CEDS document. The staff also offers planning and technical assistance support for developing and implementing priority regional and local development projects. Project development coordination meetings with the Governors Office of Appalachia and the other two development districts have continued over the past year. In addition, OVRDC staff has continued meeting and coordinating efforts with the Governors Regional Economic Development Office (Region 7-Southern Ohio). OVRDC staff is responsible for developing annual work programs for our Economic Development Administration (EDA) Economic Development District (EDD) grant, our Appalachian Regional Commission (ARC) Local Development District (LDD) grant, and our State of Ohio LDD support grant. When these applications are submitted annually, the work program elements are drawn from the priority objectives and strategies of our most recent CEDS document.

OVRDC Staff – January 1, 2010

Name	Position	Years Working at OVRDC
John Hemmings	Executive Director	18 years
Rebecca Banchy-McIlwain	Finance Director	34 years
Sherrie Lanier	Development Director	1 year
Michele Throckmorton	Economic Development Coordinator	16 years
Kim Reynolds	Community Development Coordinator	12 years
Jason Gillow	Research/Planning Specialist II	8 years
Sharon Clark	Administrative Assistant	5 years
Juanita Bragg	Bookkeeper/Network Administrator	22 years
Shannon Nichols	Program Secretary II	8 years

OVRDC 2010 CEDS Performance Report

OVRDC Staff –November 18, 2010

Name	Position	Years Working at OVRDC
John Hemmings	Executive Director	19 years
Michele Throckmorton	Development Director	17 years
Juanita Bragg	Finance Director	23 years
Kim Reynolds	Community Development Coordinator	13 Years
Jason Gillow	Research/Planning Specialist II	9 Years
Jessica Hollis	Economic Development Specialist	5 months
Sharon Clark	Administrative Assistant	6 Years
Shannon Nichols	Program Secretary II	9 Years
	Bookkeeper/Secretary	

***CEDS
Performance
Measures
Review***

**C
H
A
P
T
E
R

3**

Chapter 3: CEDS Performance Measures Review

The Ohio Valley Regional Development Commission (OVRDC) annually updates and submits its Comprehensive Economic Development Strategy (CEDS) to the Economic Development Administration (EDA). In 2009, OVRDC completed a revised CEDS document for the region. For 2010, OVRDC is completing a CEDS Performance Report to measure progress of implementation of the 2009 revised CEDS. Progress on OVRDC's 2009 CEDS will be measured by 1) reporting the number of jobs created and private investment in the OVRDC region along with the number of job losses; 2) reporting the performance activities of OVRDC in 2010 and 2011; and 3) reporting progress thus far on the goals and objectives identified in the 2009 CEDS.

The Ohio Department of Development, Office of Strategic Research reports in its 2009 Ohio Private Investment list that eight companies in the OVRDC region generated private investment of \$96,000,000 and created 110 jobs **(see Exhibit E)**.

The Ohio Department of Job and Family Services, Bureau of WIA-Rapid Response Section reports in its Current WARN Notices (2006-2010) List that six companies in the OVRDC region have had layoffs totaling 3,651 employees **(see Exhibit E)**.

Upon further analysis of the Private Investment list from previous years, the main trend is that small metal manufacturing and plastic companies within the region has been investing in expansion and new growth projects on a continuing basis from year to year. Additionally there has been a decline in the new expansion and growth for wood related companies in the last few years. Other notable investments recently are the relocation of companies' headquarters to the region, investments in intermodal development and healthcare projects. All these new investments help create jobs and new opportunities throughout the region. Also further analysis of the WARN notices, show that several automotive and wood related companies have been downsizing or closing, this is directly related to the downturn spiral of the housing and automotive industries and the recession from the past few years. Finally the closing of DHL in Clinton County had a negative impact on the local workforce for the northwest portion of the OVRDC Region.

OVRDC produces an Executive Director's Annual Report and presents it to the Full Commission members at their March meeting **(see Exhibit F)**.

OVRDC has identified the following performance measures for identified Goals and Objectives from the 2009 revised CEDS. These measures of performance reflect performance in late 2009 and all of 2010.

CEDS Goals, Objectives and Plan of Action

The CEDS Committee, meeting several times over that past six months, worked with information gathered through the county and regional SWOT analysis, as well as various sources of local, regional, state and national economic data developed the following Goals, Objectives and Strategies. Throughout the process, the committee used as a guide and incorporated the State of Ohio's Department of Development Strategic Plan (see attached executive summary). We adopted their goals of Share the Ohio Story, Strengthen our Strengths, Cultivate Top Talent, Invest in our Regional Assets and Focus on our Customers to the OVRDC region and the CEDS.

Goal 1: Share the Southern Ohio Story.

Objective 1: Improve the perception of Southern Ohio by business executives and site selection consultants both in and outside of Southern Ohio to increase the economic growth of the region.

Strategy 1: Encourage development of marketing plan for the region.

Nothing to report at this time.

Strategy 2: Develop and maintain a website to market the region's industrial sites and strengths, such as labor force, education and incentives.

In 2009, OVRDC staff developed and submitted a grant application to HUD for funding through the Rural Housing and Economic Development (RHED) program to create, update and maintain a regional marketing website to market the region's industrial sites to potential companies and site selection consultants from around the world. Unfortunately, the application was not selected for HUD RHED funding. In 2010, OVRDC staff developed and submitted a grant application to USDA Rural Development through the Rural Business Opportunity Grant (RBOG) program to again create, update and maintain a regional marketing website to market the region's industrial sites to potential companies and site selection consultants from around the world. OVRDC was not successful in obtaining this grant.

Strategy 3: Contact and gain attention of five site selection consultants.

In 2009, OVRDC staff developed and submitted a grant application to HUD for funding through the Rural Housing and Economic Development (RHED) program to conduct a 'mock' company site visit by a site selection consultant with eight of our member counties and perform an analysis of each county's response, sites and overall preparedness. Unfortunately, the application was not selected for HUD RHED funding. In 2010, OVRDC staff developed and submitted a grant application to USDA Rural Development through the Rural Business Opportunity Grant (RBOG) program to conduct a marketing campaign to reach site selection consultants, as well as, companies in the industry sectors targeted in the State of

Ohio's Strategic Plan and OVRDC's Comprehensive Economic Development Strategy to promote the regional marketing website to. OVRDC was not successful in obtaining this grant.

Strategy 4: Encourage area residents to join the Ohio Ambassador Program in order to promote Southern Ohio and Ohio. Also, form a "Southern Ohio Ambassadors" to further promote region.

In August 2009, OVRDC informed its Executive Committee members at their regular meeting about the Ohio Ambassador Program, which is an integral part of the Ohio Department of Development's Strategic Plan to promote our state by encouraging citizens to "Share the Ohio Story." Working cooperatively with the Association of Ohio Commodores, OVRDC has been trying to plan a regional event to promote the Ohio Ambassador Program. Efforts to do so have not materialized into an event yet; however, efforts continue.

Strategy 5: Increase the number of Appalachian companies competing for and winning Export Awards.

Nothing to report at this time.

Responsibility: OVRDC, County E.D. Officials

Outcomes:

1. Regional marketing plan developed
2. Regional Website developed and maintained
3. At least five site selection consultants contacted
4. At least one site visit by a site selection consultant
5. At least one Ambassador from each county
6. At least two Appalachian companies entering Export Awards Contest.

Objective 2: Improve the perception of Southern Ohio as a tourist and residential destination to tourism industry officials and residents, both inside and outside of Southern Ohio.

Strategy 1: Coordinate the development and/or compiling of "Theme" Tours throughout region with mapping and routing available online and encourage marketing by counties to potential visitors, including international visitors.

OVRDC has been working cooperatively with the Appalachian Adventure Trail (AAT) for several years and continued that cooperation in 2009 and 2010. The AAT's accomplishments and activities in 2009 included the addition of Morgan County, a sponsorship drive, attending the 2009 Appalachia Spotlight Show, and new content to the AAT website. The AAT's accomplishments and activities during 2010 included the completion of the new trail maps, the designing and printing of a new brochure, and the creation of a sustainability plan.

In 2009, OVRDC completed major map revisions to the Adams County Visitors' brochure map upon request from Tom Cross, Executive Director of the Adams County Travel & Visitors Bureau.

Strategy 2: Develop and make available to counties educational training for local officials, key businesses (hotels, convenience stores, etc.) and volunteers.

Nothing to report at this time.

Strategy 3: Continue to support AppalachianOhio.com to market region.

The Ohio Valley Regional Development Commission (OVRDC) continues to work in partnership and cooperation with the Ohio University Voinovich School for Leadership and Public Affairs on many items including the AppalachiaOhio.com (aka FirstOhio.com) website. OVRDC maintains a link to the AppalachiaOhio.com website on the front page of its website.

Strategy 4: Encourage participation in the Ohio Ambassador Program.

In August 2009, OVRDC informed its Executive Committee members at their regular meeting about the Ohio Ambassador Program, which is an integral part of the Ohio Department of Development's Strategic Plan to promote our state by encouraging citizens to "Share the Ohio Story." Working cooperatively with the Association of Ohio Commodores, OVRDC has been trying to plan a regional event to promote the Ohio Ambassador Program. Efforts to do so have not materialized into an event yet, however, efforts continue.

Strategy 5: Facilitate meetings with Tourism Directors to survey needs and encourage cooperation.

Nothing to report on at this time.

Responsibility: OVRDC, County Tourism Directors

- Outcomes:**
1. List of "Theme" tours compiled
 2. Tourism training materials developed and made available
 3. One Ambassador identified for each county
 4. Number of visitors to Southern Ohio increased by 5%.

Goal 2: Strengthen Our Strengths.

Objective 1: Retain and strengthen our existing businesses and industries to retain our current job base.

Strategy 1: Conduct baseline Retention and Expansion Study in each OVRDC county.

In 2009, OVRDC staff developed and submitted a grant application to HUD for funding through the Rural Housing and Economic Development (RHED) program to purchase retention and expansion software program called Synchronist which would have aided the OVRDC counties in putting into place a formal retention and expansion program to track current problems, spot trends and generate a myriad of reports to keep local officials on top of the economic situation in their county, region and state, as well as see how they compare on a national and global level. Unfortunately, the application was not selected for HUD RHED funding. In 2010 through a contract with the Ohio University Voinovich School of Leadership and Public Affairs, OVRDC did move forward with the purchase of the Synchronist software to assist Jackson County with a formal retention and expansion effort. OVRDC now has the software to offer this service to all of its counties.

Strategy 2: Link industries with available and appropriate resources, such as training, funding sources, etc. (Identified by R&E Study)

Nothing to report on at this time.

Strategy 3: Develop resource guide/website for companies with information on available programs, funding sources, etc.

Nothing to report on at this time.

Responsibility: OVRDC, County E.D. Officials, Chambers

- Outcomes:**
- 1. R&E survey completed and analyzed in each county**
 - 2. Information meeting/seminar held for companies**
 - 3. Resource/Information guide developed and maintained**
 - 4. At least 200 jobs retained and 100 jobs created.**

Objective 2: Use existing industries to determine possible target industries for attraction, such as similar or compatible industries and supply chain companies to create new jobs.

Strategy 1: Use R&E study to gather information, analyze and provide information back to economic development officials.

Nothing to report on at this time.

Strategy 2: Determine if existing companies' products can be utilized or adapted to "green" industry sector.

Nothing to report on at this time.

Strategy 3: Assist companies with the conversion to green energy.

Nothing to report on at this time.

Responsibility: OVRDC, County E.D. Officials, Companies

- Outcomes:**
1. Analysis completed to determine industries to target
 2. Workshop for Southern Ohio companies held to explore manufacturing and supply needs of "green" industries
 3. Five companies assisted with converting to greener technology.

Objective 3: Continue to support small businesses and entrepreneurs.

Strategy 1: Provide "clearinghouse" of information needed for entrepreneurs and small businesses.

Nothing to report on at this time.

Strategy 2: Facilitate connections between businesses, government and education to bridge current disconnect among them.

On February 25, 2010, the Southern Ohio Procurement Outreach Center "Government Marketing 101: An Introduction to Government Procurement" workshop was held. This workshop provided business owners an overview of the government procurement process. Topics included small business designations, contracting resources, detail of the contracting process, funding opportunities, the bid process, subcontracting, and working with specific agencies.

On March 9, 2010, the Minority Contractors Business Assistance Program workshop sponsored by PIDC's Ohio Valley Minority Business Association was held. The theme of the workshop was "Turn Around Ohio – Business Must Be The Number One Priority in 2010."

On April 7, 2010, the Southern Ohio Procurement Outreach Center workshop for small business owners on "Doing Business with the Ohio Department of Transportation" was held.

On May 19, 2010, the WesBanco CDC "Pitch Your Plan" 2010 Business Plan Competition hosted by the OSU South Centers in Piketon was held. The competition winners of the ten county region were announced during this event.

Strategy 3: Continue operation of OVRDC RLF fund and coordination of Regional Business Assistance Network

OVORDC provides ongoing outreach meetings with potential loan applicants. During this reporting period, the RLF Coordinator provided technical assistance to approximately 51 entrepreneurs interested in starting and/or expanding their business.

Responsibility: OVRDC, County E.D. Officials, Chamber Officials

- Outcomes:**
1. Resource Clearinghouse/Data Base developed and maintained
 2. Meeting facilitated between business and government leaders
 3. RLF continued with at least 1 new loan.
 4. At least 25 jobs retained and 10 jobs created.

Objective 4: Determine and build upon OVRDC's core strengths to grow the agency.

Strategy 1: Determine OVRDC's strengths.

OVORDC, through the development of its 2009 CEDS, has had the opportunity to identify its strengths. The 2009 CEDS lays a roadmap with goals, objectives and strategies that OVRDC can attempt to accomplish over the next three years. It considers the staff's strengths and identifies strategies within our range of expertise.

Strategy 2: Maintain core programs and explore additional funding to expand upon them.

OVORDC has maintained its core programs including Appalachian Regional Commission (ARC), Economic Development Administration (EDA), and Ohio Public Works Commission(OPWC) project technical assistance and review. It has maintained a commitment to administer Community Development Block Grant (CDBG) projects for communities within the region and has continued its Geographic Information System (GIS) technical assistance. Efforts have been made over the past year to secure grants and contracts to expand our technical assistance in many of these areas. Grant applications to EDA, HUD, and USDA Rural Development have been developed and submitted. An EDA grant in the amount of \$150,000 was secured to support our efforts to assist with economic recovery in Clinton, Fayette, and Highland Counties in response to the DHL Airpark closure in Wilmington, Ohio. The HUD grant was denied and we are awaiting a decision about our USDA Rural Development application. Contracts have been secured with the Ohio University Voinovich School for Leadership and Public Affairs to assist with a local economic development planning project in Jackson County, and we have secured four CDBG administration contracts with local communities in the region.

Strategy 3: Explore internships with area colleges to provide students to compile needed information and develop data bases, etc. as identified above.

Nothing to report on at this time.

Responsibility: OVRDC

Outcomes:

1. OVRDC Strengths identified
2. Core programs maintained and/or expanded;
3. Intern obtained to help with data compilation

Goal 3: Cultivate Top Talent

Objective 1: Retain, train and advance our existing workforce—white, blue and green collar workers and recruit the best new workforce available for the future.

Strategy 1: Identify needs of business (R&E Study)

Nothing to report on at this time.

Strategy 2: Facilitate dialogue between business and education and government.

Nothing to report on at this time.

Strategy 3: Build upon existing educational strengths and resources.

Nothing to report on at this time.

Strategy 4: Conduct Wage and Benefit Survey to help in promotion of our workforce to potential companies.

Nothing to report on at this time.

Strategy 5: Work with state and local Job and Family Service offices and One-Stop Centers to facilitate needed training programs linking workers and companies with educational institutions.

The One-Stops in the OVRDC area that are offering or had offered programs to connect employers, workers, and training institutions since October 2009 were the Pike County One-Stop and the Lawrence County One-Stop. The Pike County One-Stop had a program working with Glatfelter and Ohio University in Chillicothe and had between 600 and 700 participants that resulted in 2172 trainings. The Lawrence County One-Stop had a program working with the Leibert Corporation to connect employees to various training institutions offering

commercial driver's license training in order to upgrade their certifications. About 150 employees participated.

Responsibility: OVRDC, Business Leaders, Education Leaders, One-Stop Centers, County CIC, E.D. and Chamber officials.

Outcomes:

1. R & E Study completed in each county.
2. Regional meeting held with business and education leaders and government officials to discuss needs identified in R&E Study
3. Wage and Benefit Survey conducted, results provided to area E.D. officials
4. At least 50 workers per county receive training
5. At least 15 companies assisted with training needs

Goal 4: Invest in Our Local/Regional Assets

Objective 1: Improve our communities' existing physical assets.

Strategy 1: Work to make broadband available and affordable to all residents and businesses in region.

In late 2008, discussions began about the possibility of a multi-county initiative to get broadband access to most areas of Appalachia Ohio. Three of Ohio's Local Development Districts (OVRDC, Buckeye Hills-Hocking Valley Regional Development District, and the Ohio Mid-Eastern Governments Association) were asked to join early in the project's development to provide regional support. The Ohio Local Development Districts were instrumental in securing support from their member counties for the project.

In 2009, the Southern Ohio Health Care Network (SOHCN) made application through the U.S. Department of Commerce (DOC) National Telecommunications and Information Administration (NTIA) requesting almost \$189 million for the Connecting Appalachia Initiative. This project offered a comprehensive and sustainable plan to expand broadband availability across 34 underserved rural Ohio counties (29 in Ohio Appalachia). Based on an innovative technology package and carrier partnerships, the project would have delivered metropolitan-class broadband in local communities, residential fixed-wireless broadband in the rural expanse of the region, and mobile data services for first responders.

In early 2010, the SOHCN was notified by the USDOC NTIA that its application was not selected for funding for the first round of American Recovery and Reinvestment Act (ARRA) broadband funding.

Despite this news, efforts to secure Round 2 ARRA funds for broadband are currently occurring. Horizon Telephone of Chillicothe, Ohio, with nearly \$30 million in matching funds, made application through the U.S. Department of

Commerce (DOC) National Telecommunications and Information Administration (NTIA) requesting almost \$70 million for the Connecting Appalachia Initiative. This application is for the same 34-county region but only includes the development of a middle-mile fiber backbone. Again, the three Ohio Local Development Districts were instrumental in securing support from their member counties for the project. We are currently awaiting the decision of the NTIA on this proposal.

Strategy 2: Provide technical assistance to communities to identify both new and existing (maintenance/replacement) water and sewer infrastructure needs and link them to funding sources.

The City of Hillsboro WWTP Expansion and By-pass Elimination project consists of the construction and increase in capacity of the existing WWTP to 6 mgd. The outcome is the retention of 1,800 jobs. (ARC - \$250,000, OPWC - \$660,000, TPC - \$17,186,134)

The Pike County Manufacturing Center Improvement project consists of installing 13,000 lf of sanitary sewer and 4,200 lf of public roadway to improve a 700-acre site. The outcome is the development of a 700-acre industrial, technological, and commercial site. (ARC - \$250,000, TPC - \$3,266,000)

The City of Portsmouth Water System Pump Upgrades project consists of the replacement of valves, piping, two high service pumps, variable speed drives, and controls for the filtration plant. The outcome is the retention of 264 employees at Pepsi-Cola Bottlers Central Division. (ARC - \$150,000, TPC - \$406,350)

The Richmond Dale Sanitary Sewer and WWTP project consists of the construction of central sanitary sewer and a 30,000 gpd WWTP. The outcome is safe, reliable sanitary sewer to 172 households and several businesses which will retain 28 jobs. (ARC - \$250,000, TPC - \$2,378,000)

The Village of Coalton/Coal Township Wastewater Improvements project consists of a new wastewater treatment plant, collection system improvements. The outcome is 334 customers in the Village of Coalton and Coal Township will have adequate wastewater collection and treatment facilities and 50 jobs will be retained. (ARC - \$250,000, OPWC - \$650,000, TPC - \$3,464,000)

The Village of Frankfort Water System Improvements consists of the replacement of a majority of the waterlines within the village, new fire hydrants, replacement of existing water meters, and the replacement of the existing water tank with a 450,000 gallon standpipe. The outcome is safe, reliable water to 442 households and many businesses which will retain 242 jobs. (ARC - \$250,000, OPWC - \$700,000, TPC - \$3,775,650)

The Lawshe Waterline Extension project consists of the installation of 36,000 feet of 6” waterline, 50,300 feet of 4” waterline and 50,300 feet of 3” waterline as well as associated valves, hydrants, service connections and other appurtenances. The outcome is 150 households and several businesses will be served with safe, reliable and affordable source of potable water. This project will create 6 new jobs. (ARC - \$250,000, OPWC - \$425,000, TPC - \$2,090,650)

The Richland/Jackson Townships Waterline Extension project consists of the installation of 9,000 lf of 6” waterlines. The outcome is 52 households will have safe, reliable and affordable source of potable water. (ARC - \$250,000, TPC - \$313,000)

The Village of Hamden Sludge Handling project consists of a new building and installation of a belt filter press to press sewer sludge into a cake that can be hauled to a landfill. The outcome is 394 households will have lower sanitary sewer rates and the village will save approximately half of what they pay in a year which is \$28,800. (ARC - \$250,000, TPC - \$350,000)

The Village of Leesburg Water Supply Improvement project consists of replacing a well as well as adding an additional well that will when running simultaneously with other wells. The outcome will satisfy OEPA requirements in order to supply to their standards. (OPWC - \$251,865, Local - \$27,985)

The Village of South Point Water Distribution Rehabilitation Project consists of replacement of 5,800 linear feet of 8-inch waterline, 22 valves, 15 system connections, 85 service connections and 2,125 feet of service waterline and pavement restoration. The outcome will protect the health and welfare of the systems water customers. (OPWC - \$294,085, Local - \$92,230)

The Northwest Regional Water – Dry Run Tank Project consist of replacement of an existing 30,000 gallon storage tank to a 100,000 gallon above ground water storage tank. The outcome will meet the OEPA standards of a minimum tank of 95,200 gallons to accommodate 238 customers in the area.. (OPWC - \$116,250, Local - \$116,250)

Responsibility: OVRDC, Communities, Elected Officials, Connecting Appalachia

Outcomes:

1. Affordable broadband available to all of Southern Ohio
2. Technical assistance provided to 25 communities/counties
3. At least 20 infrastructure projects funded and completed.

Objective 2: Aid communities in the development of dedicated plans to handle future infrastructure maintenance and growth needs.

Strategy 1: Assist communities in conducting an inventory of existing infrastructure and developing 5 year capital improvement planning.

Nothing to report on at this time.

Responsibility: OVRDC, RCAP, Communities

Outcomes: 1. At least 5 communities assisted in completing a capital improvement plan.

Objective 3: Improve existing and develop new transportation systems.

Strategy 1: Promote designation of Rural Planning Organizations (RPO) to give rural governments a larger voice in infrastructure planning and provide a means of prioritizing projects on a regional basis.

OVRDC continues to support federal legislation that would recognize rural planning districts such as itself, Buckeye Hills-Hocking Valley Regional Development District, and Ohio Mid-Eastern Governments Association as Rural Planning Organizations (RPO) with input into major transportation investments in the region.

Strategy 2: Promote completion of Appalachian Development Highway System in OVRDC region.

Nothing to report on at this time.

Strategy 3: Work to secure additional funding for our region's highways.

In early part of 2010, OVRDC staff completed the S.R. 32/U.S. 50/U.S. 35 Corridor Study. The focus area for this study was a 5-mile radius (10-miles total) along S.R. 32/U.S. 50/U.S. 35 through Adams, Athens, Brown, Clermont, Gallia, Highland, Jackson, Meigs, Pike, Ross, Vinton and Washington counties. OVRDC was awarded a grant from the Ohio Department of Development, Governor's Office of Appalachia, for this project to conduct an Economic Corridor Study & Plan for S.R.32/U.S. 50/U.S. 35. The major purpose of this study and planning effort was to maximize the economic development potential of the S.R. 32/U.S. 50/U.S. 35 corridor to create new jobs in southern and southeastern Ohio. This goal was addressed through doing a comprehensive study of the corridor that will ascertain current demand on the corridor by existing major employers and other major trip generators and potential future generators, such as existing industrial parks and commercial sites. The study also shows an inventory and maps existing water and sewer infrastructure that is available along the corridor. In addition, the corridor plan will designate the best possible future industrial and commercial development sites in terms of access and available infrastructure, as well as designate environmentally sensitive areas. This report was presented to Ohio

Department of Transportation, District 9 Office, so ODOT can proceed with a transportation study of the corridor. This report was also given to each county within the study area. Furthermore, the report and maps were posted to OVRDC's website.

Strategy 4: Promote funding and development of intermodal facilities at strategic locations in region to encourage better utilization of rail and barge facilities throughout region.

OVRDC has been working with Lawrence County on further development of The Point Industrial Park and its intermodal facilities. A railroad spur connecting The Point Industrial Park and its port facilities to the recently completed Norfolk Southern Heartland Corridor is a critical component that will allow our economic development goals to succeed. The project includes the construction of approximately 15,400 track feet of railroad spur and two safety crossings with flashers and gate arms.

Responsibility: OVRDC, Local Transportation Organizations (SEORC), Local Elected Officials.

- Outcomes:**
1. Official designation of RPO's
 2. Regional transportation projects identified and prioritized
 3. At least one OVRDC Appalachian Development Highway system project started and/or completed
 4. At least one intermodal site identified and funding pursued.

Goal 5: Focus on Our Customers and Shareholders

Objective 1: OVRDC will become a more customer friendly and shareholder based organization and will improve its perception as a local development district to local, state and federal elected officials, economic development officials, business leaders, the media and the general public.

Strategy 1: Expand reach of E-newsletter and publish at least 4 times a year.

OVRDC established its e-newsletter in 2008 and has continued publication of the e-newsletter to present date. We have expanded the distribution of the e-newsletter to 464 individuals since its inception in 2008. The e-newsletter includes information about activities of OVRDC, project development information, and information about other grant sources and community/economic development related events. The e-newsletter was published at least 10 times in 2009 and has been published 5 times thus far in 2010.

Strategy 2: Conduct more shareholder and legislative meetings.

The OVRDC Full Commission met twice in 2009 (March and September) and twice in 2010 (March and September). The Executive Committee met 10 times in 2009 and met 9 times in 2010.

On February 2, 2010, the first OVRDC Congressional Team meeting was held at the OVRDC office. Those in attendance included David Hodapp of Senator Brown's office, Gary Abernathy and Nick Gatz of Senator Voinovich's office, Margaret Horst of Congressman Mike Turner's office, Phil Roberts of Congressman Charlie Wilson's office, Brad Young of Congressman Steve Austria's office, and Cindy Cunningham of Congressman Zack Space's office. Staff met with these individuals to discuss the need of a new building for the OVRDC office, to discuss the need for better broadband access in the OVRDC region, to discuss concerns with our EDA Economic Development District and Economic Recovery Coordinator grant awards, and to discuss projects in the region they are aware of that we might be of assistance with.

Strategy 3: Improve follow-up response time to inquiries.

Nothing to report on at this time.

Strategy 4: Improve media relations by increasing the number of press releases provided to the media and scheduling visits to media outlets, when in counties.

Nothing to report on at this time.

Strategy 5: Improve relations with area business leaders by attending more Chamber of Commerce, CIC and Economic Development meetings/functions.

Nothing to report on at this time.

Strategy 6: Schedule and conduct regular meetings of economic development and business officials for a better understanding of their needs and to disseminate needed information to them from state and federal officials.

OVRDC staff work regularly with economic/business development officials. Annually, OVRDC conducts a project review committee meeting that brings economic development staff together to discuss projects and issues going on their counties. OVRDC is planning, at the request of our county economic development directors, more regular meetings with them to provide updates on activities in the region as well as new programs and directions of State of Ohio and the federal government. We have not gotten to do this to due to recent staff changes but will be conducting our first meeting by the end of 2010. Our Congressional Team members will be invited to this meeting and for the future, meetings of these two groups will be combined.

Responsibility: OVRDC

- Outcomes:**
1. E-newsletter distribution increased by 10% and published minimum of four times per year
 2. Conduct an additional five shareholder meetings and two additional legislative meetings yearly
 3. Institute inquiry response time procedures
 4. Provide an additional four press releases per year and schedule at least two media visits per year
 5. OVRDC staff will attend at least one business function in each county per year.
 6. Conduct at least four meetings yearly of/for economic development officials.

Note: All outcomes are to be completed by December 31, 2012.

OVRDC Profile

E
X
H
I
B
I
T
A

Ohio County Profiles

OHIO VALLEY REGIONAL DEVELOPMENT COMMISSION

Recreated by OVRDC -- Source Reports prepared by the Office of Strategic Research

Ohio Valley Regional Development Commission

2006 Population: 658,603
Land Area: 5,988.7 square miles

Ohio Valley Regional Development Commission
9329 St Rt 220 E, Suite A
Waverly, OH 45690
Phone: (740) 947-2853 Fax: (740) 947-3468



Taxes

Taxable value of real property	\$9,088,482,750
Residential	\$6,421,072,170
Agriculture	\$907,342,920
Industrial	\$323,543,940
Commercial	\$1,431,912,080
Mineral	\$4,611,640
Ohio income tax liability	\$347,476,029
Average per return	\$1,272.73

Land Use/Land Cover

	Percent
Urban (Residential/Commercial/Industrial/Transportation and Urban Grasses)	2.71%
Cropland	28.31%
Pasture	11.74%
Forest	56.11%
Open Water	0.77%
Wetlands (Wooded/Herbaceous)	0.00%
Bare/Mines	0.18%

Largest Areas

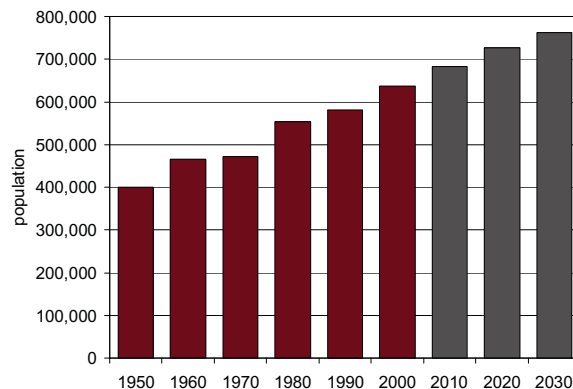
	Census 2000	Est. 2006
Union twp, Clermont Co.	42,332	43,635
Miami twp, Clermont Co.	36,632	39,619
Chillicothe, Ross Co.	21,796	22,216
Portsmouth, Scioto Co.	20,909	20,132
Batavia twp UB, Clermont Co	15,039	17,362
Goshen twp, Clermont Co	13,663	16,052
Washington C. H. city, Fayette	13,631	13,612
Union twp, Ross Co.	11,750	11,880
Ironton, Lawrence Co.	11,211	11,416
Pierce twp UB, Clermont Co	10,321	10,910

UB: Unincorporated Balance



Total Population

Census	Estimated
1800 11,972	2001 639,357
1810 50,113	2002 643,453
1820 103,171	2003 647,321
1830 135,014	2004 651,023
1840 171,461	2005 654,605
1850 231,013	2006 658,603
1860 276,884	
1870 307,680	Projected
1880 344,120	2010 683,550
1890 344,229	2020 727,210
	2030 762,710



Population by Race

	Number	Percent
Total Population	635,970	100.0%
White	610,737	96.0%
African-American	12,135	1.9%
Native American	2,269	0.4%
Asian	2,637	0.4%
Pacific Islander	124	0.0%
Other	1,112	0.2%
Two or More Races	6,956	1.1%
Hispanic (may be of any race)	4,191	0.7%
Total Minority	27,898	4.4%

Educational Attainment

	Number	Percent
Persons 25 years and over	414,633	100.0%
No high school diploma	97,209	23.4%
High school graduate	169,912	41.0%
Some college, no degree	71,083	17.1%
Associate degree	22,535	5.4%
Bachelor's degree	35,153	8.5%
Master's degree or higher	18,741	4.5%

Family Type by Employment Status

	Number	Percent
Total Families	175,597	100.0%
Married couple, husband and wife in labor force	68,907	16.6%
Married couple, husband in labor force, wife not	33,330	8.0%
Married couple, wife in labor force, husband not	10,944	2.6%
Married couple, husband and wife not in labor force	26,971	6.5%
Male householder, in labor force	6,749	1.6%
Male householder, not in labor force	2,718	0.7%
Female householder, in labor force	16,253	3.9%
Female householder, not in labor force	9,725	2.3%

Household Income in 1999

	Number	Percent
Total Households	241,520	100.0%
Less than \$10,000	27,987	11.6%
\$10,000 to \$19,999	36,236	15.0%
\$20,000 to \$29,999	35,409	14.7%
\$30,000 to \$39,999	32,651	13.5%
\$40,000 to \$49,999	27,084	11.2%
\$50,000 to \$59,999	22,342	9.3%
\$60,000 to \$74,999	22,698	9.4%
\$75,000 to \$99,999	20,671	8.6%
\$100,000 to \$149,999	11,262	4.7%
\$150,000 to \$199,999	2,535	1.0%
\$200,000 or more	2,645	1.1%
Median household income	\$36,735	

Population by Age

	Number	Percent
Total Population	635,970	100.0%
Under 6 years	51,582	8.1%
6 to 17 years	114,338	18.0%
18 to 24 years	55,417	8.7%
25 to 44 years	189,116	29.7%
45 to 64 years	146,864	23.1%
65 years and more	78,653	12.4%
Median Age	36.3	

Family Type by Presence of Own Children Under 18

	Number	Percent
Total Families	175,597	100.0%
Married-couple families with own children	63,725	36.3%
Male householder, no wife present, with own children	5,599	3.2%
Female householder, no husband present, with own children	15,582	8.9%
Families with no own children	90,691	51.6%

Poverty Status in 1999 of Families By Family Type by Presence of Related Children

	Number	Percent
Total Families	175,597	100.0%
Family income above poverty level	157,483	25.4%
Family income below poverty level	18,114	2.9%
Married couple, with related children	5,256	0.8%
Male householder, no wife present, with related children	1,385	0.2%
Female householder, no husband present, with related children	7,100	1.1%
Families with no related children	4,373	0.7%

Ratio of Income in 1999 To Poverty Level

	Number	Percent
Population for whom poverty status is determined	620,054	100.0%
Below 50% of poverty level	32,726	5.3%
50% to 99% of poverty level	49,544	8.0%
100% to 149% of poverty level	59,346	9.6%
150% to 199% of poverty level	59,939	9.7%
200% of poverty level or more	418,499	67.5%

Residence in 1995

	Number	Percent
Population 5 years and over	592,674	100.0%
Same house in 1995	347,192	58.6%
Different house, same county	142,639	24.1%
Different county, same state	66,730	11.3%
Different state	33,231	5.6%
Puerto Rico or U.S. islands	68	0.0%
Foreign country	2,814	0.5%

Travel Time To Work

	Number	Percent
Workers 16 years and over	271,034	100.0%
Less than 15 minutes	70,954	26.2%
15 to 29 minutes	87,995	32.5%
30 to 44 minutes	55,139	20.3%
45 to 59 minutes	24,089	8.9%
60 minutes or more	25,484	9.4%
Worked at home	7,373	2.7%
Mean travel time	28.3 minutes	

Housing Units

	Number	Percent
Total housing units	263,094	100.0%
Occupied housing units	241,464	91.8%
Owner occupied	178,154	67.7%
Renter occupied	63,310	24.1%
Vacant housing units	21,630	8.2%

Year Structure Built

	Number	Percent
Total housing units	263,094	100.0%
Built 1995 to March 2000	30,340	11.5%
Built 1990 to 1994	23,396	8.9%
Built 1980 to 1989	36,504	13.9%
Built 1970 to 1979	48,989	18.6%
Built 1960 to 1969	29,280	11.1%
Built 1950 to 1959	30,923	11.8%
Built 1940 to 1949	17,579	6.7%
Built 1939 or earlier	46,083	17.5%
Median year built	1960	

Value for Specified Owner-Occupied Housing Units

	Number	Percent
Specified owner-occupied housing units	124,714	100.0%
Less than \$20,000	2,204	1.8%
\$20,000 to \$39,999	8,977	7.2%
\$40,000 to \$59,999	16,247	13.0%
\$60,000 to \$79,999	23,193	18.6%
\$80,000 to \$99,999	24,713	19.8%
\$100,000 to \$124,999	16,270	13.0%
\$125,000 to \$149,999	12,075	9.7%
\$150,000 to \$199,999	12,131	9.7%
\$200,000 to \$249,999	4,371	3.5%
\$250,000 to \$499,999	4,195	3.4%
\$500,000 to \$999,999	259	0.2%
\$1,000,000 or more	79	0.1%
Median value	\$85,800	

House Heating Fuel

	Number	Percent
Occupied housing units	241,464	100.0%
Utility gas	79,161	32.8%
Bottled, tank or LP gas	37,732	15.6%
Electricity	87,464	36.2%
Fuel oil, kerosene, etc	26,887	11.1%
Coal, coke or wood	8,611	3.6%
Solar energy or other fuel	1,179	0.5%
No fuel used	430	0.2%

Gross Rent

	Number	Percent
Specified renter-occupied housing units	60,611	100.0%
Less than \$100	905	1.5%
\$100 to \$199	4,524	7.5%
\$200 to \$299	5,145	8.5%
\$300 to \$399	10,270	16.9%
\$400 to \$499	12,593	20.8%
\$500 to \$599	10,019	16.5%
\$600 to \$699	5,079	8.4%
\$700 to \$799	2,988	4.9%
\$800 to \$899	1,444	2.4%
\$900 to \$999	644	1.1%
\$1,000 to \$1,499	804	1.3%
\$1,500 or more	174	0.3%
No cash rent	6,022	9.9%
Median gross rent	\$489	
Median gross rent as a percentage of household income in 1999	24.9	

Selected Monthly Owner Costs for Specified Owner-Occupied Housing Units

	Number	Percent
Specified owner-occupied housing units with a mortgage	82,066	100.0%
Less than \$400	3,273	4.0%
\$400 to \$599	13,189	16.1%
\$600 to \$799	18,898	23.0%
\$800 to \$999	15,914	19.4%
\$1,000 to \$1,249	12,986	15.8%
\$1,250 to \$1,499	8,423	10.3%
\$1,500 to \$1,999	6,314	7.7%
\$2,000 to \$2,999	2,638	3.2%
\$3,000 or more	431	0.5%
Median monthly owners cost	\$825	
Median monthly owners cost as a percentage of household income	20.1	

Vital Statistics

	Number	Rate
Births / rate per 1,000 women aged 15-44	8,813	65.9
Teen births / rate per 1,000 females 15-17	308	24.5
Deaths / rate per 100,000 population	6,582	1,079.1
Marriages / rate per 1,000 population	4,156	6.9
Divorces / rate per 1,000 population	2,749	4.8

Migration

Agriculture

Land in farms (acres)	1,709,000
Number of farms	9,810
Average size (acres)	174
Total cash receipts	\$293,075,000
Per farm	\$29,875

Education

Public schools	248
Students (Average Daily Membership)	111,553
Expenditures per student	\$8,209
Student-teacher ratio	18.3
Graduation rate	90.6
Teachers (Full Time Equivalent)	6,474.5
Non-public schools	25
Students	3,921
4-year public universities	1
Branches	3
2-year public colleges	2
Private universities and colleges	2
Public libraries (Main / Branches)	15 / 42

Transportation

Registered motor vehicles	781,021
Passenger cars	477,199
Noncommercial trucks	160,205
Total license revenue	\$19,972,238.78
Interstate highway miles	28.53
Turnpike miles	0.00
U.S. highway miles	556.28
State highway miles	1,814.32
Commercial airports	12

Voting

Number of precincts	702
Number of registered voters	416,422
Voted in 2006 election	222,521
Percent turnout	53.4%

Health Care

Physicians (MDs & DOs)	761
Registered hospitals	10
Number of beds	1,474
Licensed nursing homes	66
Number of beds	5,905
Licensed residential care	19
Number of beds	1,218
Adults with employer-based insurance	56.4%
Children with employer-based insurance	56.5%

State Parks, Forests, Nature Preserves, And Wildlife Areas

Facilities	83
Acreage	198,744.11

Communications

Television stations	0
Radio stations	24
Daily newspapers	6
Circulation	55,514

Crime

Total crimes reported in Uniform Crime Report	21,005
---	--------

Finance

FDIC insured financial institutions (HQs)	28
Assets	\$5,796,768,000
Branch offices	218
Institutions represented	86

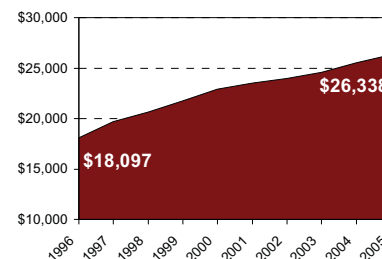
Transfer Payments

Total transfer payments	\$3,806,286,000
Payments to individuals	\$3,629,451,000
Retirement and disability	\$1,369,635,000
Medical payments	\$1,646,920,000
Income maintenance (Supplemental SSI, family assistance, food stamps, etc)	\$423,642,000
Unemployment benefits	\$74,122,000
Veterans benefits	\$92,045,000
Federal education and training assistance	\$21,163,000
Other payments to individuals	\$1,924,000
Total personal income	\$17,241,181,000
Dependency ratio	28.1%

Federal Expenditures

Direct expenditures or obligations	\$3,478,707,868
Retirement and disability	\$1,474,296,026
Other direct payments	\$719,153,880
Grant awards	\$1,014,433,330
Highway planning and construction	\$35,821,757
Temporary assistance to needy families	\$42,353,571
Medical assistance program	\$737,256,504
Procurement contract awards	\$117,855,257
Dept. of Defense	\$4,637,436
Salary and wages	\$152,969,375
Dept. of Defense	\$8,806,000
Other federal assistance	\$726,903,356
Direct loans	\$29,137,391
Guaranteed loans	\$281,528,128
Insurance	\$416,237,837

Per Capita Personal Income



Civilian Labor Force

	2002	2003	2004	2005	2006
Civilian labor force	307,700	311,600	315,500	317,800	321,100
Employed	287,200	289,900	293,400	296,900	301,700
Unemployed	20,700	22,000	22,100	21,100	19,600
Unemployment rate	6.7	7.1	7.0	6.6	6.1

Employment and Wages by Sector

NAICS Industrial Sector	Average Annual Employment		Total Wages (in thousands of dollars)	
	2004	2005	2004	2005
Total covered under Ohio UC Law	187,161	187,575	\$5,619,024	\$5,764,817
Private Sector	151,060	152,612	\$4,477,498	\$4,623,907
Agriculture, forestry, fishing and hunting	335	275	\$6,942	\$5,355
Mining	387	396	\$15,138	\$15,168
Utilities	1,900	1,903	\$115,853	\$120,323
Construction	8,816	8,455	\$297,677	\$293,656
Manufacturing	29,483	29,953	\$1,281,119	\$1,304,543
Wholesale trade	4,185	4,419	\$183,630	\$203,425
Retail trade	28,528	28,129	\$562,219	\$565,381
Transportation and warehousing	3,804	3,078	\$124,081	\$107,236
Information	2,842	2,820	\$138,163	\$141,121
Finance and insurance	6,693	6,857	\$281,812	\$303,451
Real estate and rental and leasing	1,813	1,807	\$41,680	\$43,031
Professional and technical services	3,701	3,626	\$138,321	\$142,069
Management of companies and enterprises	597	550	\$28,254	\$23,130
Administrative and waste services	6,079	6,306	\$129,773	\$137,673
Educational services	968	943	\$18,364	\$17,053
Health care and social assistance	19,474	20,557	\$564,685	\$609,333
Arts, entertainment, and recreation	1,292	1,332	\$17,447	\$18,463
Accommodation and food services	16,175	17,108	\$163,928	\$176,346
Other services, except public administration	4,918	4,895	\$95,389	\$95,317
State and Local Government	33,907	34,963	\$1,082,101	\$1,140,909
State government	5,074	5,109	\$191,102	\$199,521
Local government	26,936	27,113	\$828,560	\$853,542
Federal Government	2,617	2,348	\$137,949	\$124,020

-1 or \$0 indicates suppression for confidentiality

Business Numbers

	2002	2003	2004	2005	2006
Business starts	1,352	1,540	1,235	1,100	1,326
Active businesses	11,118	11,175	11,283	11,298	11,210

Residential

Construction

	2002	2003	2004	2005	2006
Total units	2,041	2,228	2,236	2,437	1,828
Total valuation (000)	\$240,297	\$290,814	\$305,218	\$323,931	\$237,788
Total single-unit bldgs	1,691	1,929	2,010	1,859	1,438
Average cost per unit	\$132,272	\$140,554	\$145,284	\$155,714	\$148,431
Total multi-unit bldg units	350	299	226	578	390
Average cost per unit	\$47,502	\$65,839	\$58,391	\$59,619	\$62,419

Major Employers

Mill's Pride Cabinetry	Mfg
Adena Health System	Serv
Scioto Memorial Campus	Serv
Glatfelter Co	Mfg
Ford	Mfg
Zf Batavia Llc	Mfg
Batavia Transmission LLC	Mfg
Kenworth Truck Co	Mfg
United States Enrichment Corp	R&D
General Mills Inc	Mfg
US Veterans Medical Ctr	Serv
Michelina's Inc	Mfg
Tsp Inc	Mfg
Yusa Corp	Mfg
Holzer Hospital Foundation Inc	Serv
Senco Products Inc	Trade

OHIO VALLEY REGIONAL DEVELOPMENT COMMISSION

Come Discover OVRDC Region



*Full
Commission,
Project Review
Committee, RLF
Committee*

**E
X
H
I
B
I
T
B**

OVRDC 2010 Full Commission List			
First Name	Last Name	Organization	County
Rick	Adamson	Adams County Regional Water Co.	Adams
Brian	Baldrige	Adams County Commissioner	Adams
Russ	Brewer	Adams Co COC	Adams
Justin	Cooper	Adams County Commissioner	Adams
Bill	Foster	Mayor of Winchester	Adams
David	Hook	Adams County Engineer	Adams
Danny	Johnson	Mayor of West Union	Adams
Gladys	Johnson		Adams
Terry	Lawler	Grantwriter	Adams
Alvin	Norris	Adams/Brown Economic Opp. Inc.	Adams
Debora	Plymail	Workforce Connections	Adams
Roger	Rhonemus	Adams County Commissioner	Adams
Lawrence	Shiverner	Jefferson Township Trustee	Adams
G.H. "Harty"	Wallingford	G.H. Wallingford Company	Adams
David	Wheeler	Mayor, Village of Seaman	Adams
Ray	Becraft	Brown County Chamber	Brown
Dale	Cahall	Mayor, Village of Georgetown	Brown
Jim	Castle		Brown
Todd	Cluxton	Brown County Engineer	Brown
Bill	Geshwind	Brown County Commissioner	Brown
Ben	Houser	H&G Nursing Homes	Brown
Ralph	Jennings	Brown County Commissioner	Brown
Louis	Johnson	Perry Township Trustee	Brown
Dennis	Kiley	Chatfield College	Brown
Bruce	Lunsford	Mayor of Mt. Orab	Brown
Alvin	Norris	Adams/Brown Eco. Opportunities, Inc.	Brown
Margery	Paeltz	Brown County Commissioner	Brown
Rob	Sharrett	President, Township Association	Brown
Bertha J.	Thomas	Brown County Minority Rep	Brown
Amy	Brewer	Mayor of Milford	Clermont
Ramona	Carr	Mayor of New Richmond	Clermont
R. Scott	Croswell III	Clermont County Commissioner	Clermont
Ed	Humphrey	Clermont County Commissioner	Clermont
Billie	Kuntz	Clermont Co. Community Services	Clermont
Mary Ann	Lefker	Mayor of Williamsburg	Clermont
Betty	Lucas	Mayor of Neville	Clermont
Pat	Manger	Clermont County Engineer	Clermont

OVRDC 2010 Full Commission List			
First Name	Last Name	Organization	County
Ken	Morrison	US Grant Career Center	Clermont
Bob	Proud	Clermont County Commissioner	Clermont
Joyce	Richardson	Monroe Township Trustee	Clermont
Tim	Ross	Innerwood & Company, LLC	Clermont
Ray	Sebastian	Clermont Co Chief Building Inspector	Clermont
Matthew	Van Sant	President/CEO Clermont COC	Clermont
Rob	Weisgerber	Mayor of Loveland	Clermont
Tony	Anderson	Fayette County Commissioner	Fayette
Bambi	Baughn	Director, Fayette Co. CAC	Fayette
Roger	Blackburn	Fayette County COC President	Fayette
Gayle	Brown	Mayor, Village of Bloomingburg	Fayette
Jim	Davis	Fayette Co Planning Commission	Fayette
Joe	Denen	City Manager, City of Washington	Fayette
Jack	DeWeese	Fayette County Commissioner	Fayette
Jim	Garland	Concord Township Trustee	Fayette
Charles (Buck)	Harris		Fayette
David	Krupla	Mayor of Jeffersonville	Fayette
Steve	Luebbe	Fayette County Engineer	Fayette
Dale	Lynch	Chairman of Council Washington	Fayette
Doug	Marine	Doug Marine Motors	Fayette
Bob	Peterson	Fayette County Commissioner	Fayette
Fulton	Terry	Fayette County EMA/LEPC Director	Fayette
Faye	Williamson	Fayette Co DJFS	Fayette
Brett	Boothe	Gallia County Engineer	Gallia
Melissa	Clark	Gallia County Economic Dev	Gallia
Jim	Cozza	Gallipolis City Commission President	Gallia
Robert	Easter	Mayor of Rio Grande	Gallia
Justin	Fallon	Gallia County Commissioner	Gallia
Joe	Foster	Gallia County Commissioner	Gallia
Paul	Harrison	University of Rio Grande	Gallia
Luella	Henry	Vice President, GEDA	Gallia
James D.	Keels	President GEDA	Gallia
Lana	Lane	Green Township Fiscal Officer	Gallia
Gene	Layton	Mayor of Centerville	Gallia
Lori	Neal	Gallia County COC	Gallia
Tom	Reed	Executive Director, Gallia-Meigs CAP	Gallia
Lois	Snyder	Gallia County Commissioner	Gallia

OVDC 2010 Full Commission List			
First Name	Last Name	Organization	County
Tracy	Stewart Call	Marketing & Business Dev. Director	Gallia
Pam	Anderson	Highland County CAO Headstart	Highland
Blair	Aukeman	Highland Co Planning Commission	Highland
Betty	Bishop	Interim City Manager	Highland
Dr. Kevin	Boys	Southern State Community College	Highland
Charles	Bratton	White Oak Township Trustee	Highland
Jim	Cook	Mayor of Leesburg	Highland
Katy	Farber	Highland Co Chamber of Commerce	Highland
Bill	Fawley	Highland County Auditor	Highland
Gary	Heaton	Highland County Commissioner	Highland
Tom	Horst	Highland County Commissioner	Highland
Betty	Jackman	City of Greenfield	Highland
Jeremy	Shaffer	Mayor of Lynchburg	Highland
Charles	Stevens	Stevens Trustworthy Hardware	Highland
Shane	Wilkin	Highland County Commissioner	Highland
Julia	Wise	Highland County CAA	Highland
Richard	Zink	Mayor of Hillsboro	Highland
Edmund	Armstrong	Jackson County Commissioner	Jackson
Roy L.	Arthur	Bloomfield Township Trustee	Jackson
Martha	Cosby	EMA & Planning Commission Clerk	Jackson
Robert	Czechlewski	EMA Director	Jackson
Frank	Doenges	Mayor of Coalton	Jackson
Edgar	Hayburn	Mayor of Wellston	Jackson
Randy	Heath	Jackson Area Chamber Director	Jackson
Paul	McNeal	Mayor of Oak Hill	Jackson
Rick	McNelly	McNelly & Gahm Insurance	Jackson
Brian D.	McPherson	Jackson County Engineer	Jackson
Stewart	Riegel	Jackson County Implement Company	Jackson
Jim	Riepenhoff	Jackson County Commissioner	Jackson
Kurtis	Strickland	Oak Hill Chamber	Jackson
Cheryl	Thiessen	Jackson/Vinton CAO Ex. Dir.	Jackson
Martin	Wallace		Jackson
Tom	Walton	Jackson County Commissioner	Jackson
Rich	Blankenship	Mayor of Ironton	Lawrence
Les	Boggs	Lawrence County Commissioner	Lawrence
Stephen	Burcham	Lawrence County Treasurer	Lawrence
Bill	Dingus	Ex Dir. Lawrence Econ. Dev. Corp	Lawrence

OVRDC 2010 Full Commission List			
First Name	Last Name	Organization	County
Randolph	Edwards		Lawrence
Larry	Frantz		Lawrence
Rick	Griffith	McGinnis, Inc.	Lawrence
Ralph	Kline	Ironton/Lawrence County CAO	Lawrence
David	Lynd	Lawrence County Engineer	Lawrence
D. Matthew	Malone	Perry Township Trustee	Lawrence
Doug	Malone	Lawrence County Commissioner	Lawrence
Larry J.	McDaniel	Mayor of Coal Grove	Lawrence
Brenda	Neville	Lawrence Co. Reg. Planning Comm	Lawrence
Jason	Stephens	Lawrence County Commissioner	Lawrence
Shirley	Bandy	Chamber of Commerce, President	Pike
Blaine	Beekman	Pike County Commissioner	Pike
Rocky	Brown	Mayor of Beaver	Pike
Mack	Harris		Pike
Roger	Kemper	SSU Adjunct Professor	Pike
Bill	Maloy	Jackson Township Trustee	Pike
Robert	Mattey	Ohio Valley Electric Corp.	Pike
Dale	Reed	Mayor, City of Waverly	Pike
Harry	Rider	Pike County Commissioner	Pike
Ray	Roberts	Executive Director, CAC of Pike Co.	Pike
Denny	Salisbury	Pike County Engineer	Pike
Billy	Spencer	Mayor of Piketon	Pike
Ted	West	Pike County Commissioner	Pike
Pete	Wilkes	Pike Co Community & Dev. Coordinator	Pike
Joyce	Atwood	OU Chillicothe	Ross
James	Caldwell	Ross County Commissioner	Ross
Nick	Cleary	Mayor, Village of Clarksburg	Ross
Doug	Corcoran	Ross County Commissioner	Ross
Mrs. Rocky	Countryman	Mayor, Village of Bainbridge	Ross
Frank	Hirsch	Ross County Commissioner	Ross
Marvin	Jones	Ex Dir. Ross Co COC	Ross
Wayne	McLaughlin	Ross County CAA	Ross
Vicky	Mettler	Paxton Township Clerk	Ross
Charlie	Ortman	Ross County Engineer	Ross
Mal	Payne	Chillicothe Correctional Institution	Ross
J. Devon	Shoemaker	Ross County Planning Department	Ross
Joseph P.	Sulzer	Mayor, City of Chillicothe	Ross

OVRDC 2010 Full Commission List			
First Name	Last Name	Organization	County
Leigh	Thompson	Mayor of Frankfort	Ross
Robert	Wakefield	Green Township Trustee	Ross
Tom	White	Accurate Heating & Cooling	Ross
Steve	Carter	Scioto Co. ED Director	Scioto
Gary	Coleman	Business Agent, Laborer's Local #83	Scioto
Eugene	Collins, Sr.	Scioto County CAA	Scioto
Mike	Crabtree	Scioto County Commissioner	Scioto
David	Green	Scioto County Auditor	Scioto
Don	Hadsell	J & H Erectors	Scioto
Robert	Huff	Ex. Dir. SOGP	Scioto
Mark	Kuhn	Scioto County Prosecutor	Scioto
Jane	Murray	Mayor, City of Portsmouth	Scioto
Craig	Opperman	Scioto County Engineer	Scioto
Tom	Reiser	Scioto County Commissioner	Scioto
Vern "Skip"	Riffe III	Scioto County Commissioner	Scioto
Jerry	Russell	Washington Township Trustee	Scioto
Robert	Walton	Scioto Co CAA Executive Director	Scioto
James	Warren Jr.	Mayor of New Boston	Scioto
Trent	Williams	Portsmouth City Auditor	Scioto
John	Adams	Wilkesville Township Trustee	Vinton
Andy	Adelmann	Adelmann & Clark	Vinton
Michael	Bledsoe	Vinton County Commissioner	Vinton
Gary	Eberts	Mayor of Hamden	Vinton
Doug	Heitman	Mayor of Zaleski	Vinton
Lawrence "Sonny"	McWhorter	Clinton Township Trustee	Vinton
Tom	Morgan	Vinton County Commissioner	Vinton
Rick	Reynolds	Vinton Co DJFS	Vinton
Ronald	Sharrett	Vinton County Engineer	Vinton
Thomas	Sunhawk		Vinton
Jonna	Thompson	Vinton County Chamber President	Vinton
James F.	Wooddell	Mayor of McArthur	Vinton
Jerry	Zinn	Vinton County Commissioner	Vinton

OVRDC 2010 Project Review Committee			
First Name	Last Name	Organization	County
Jim	Chalker	Adams Co Economic Dev. Director	Adams
Kelly	Cole	Brown Co Economic Dev. Dir.	Brown
Andy	Kuchta	Clermont County Economic Dev	Clermont
Tim	Mitchel	Washington CH City Engineer	Fayette
Brett	Boothe	Gallia County Engineer	Gallia
Karen	Sprague	County Administrator	Gallia
Dean	Otworth	Highland Co Engineer	Highland
Jennifer	Jacobs	Jackson Co Economic Dev. Office	Jackson
Ralph	Kline	Ironton/Lawrence County CAO	Lawrence
Pete	Wilkes	Pike Co Community & Dev. Coordinator	Pike
Kelly	Shelton	Ross County Administrator	Ross
Steve	Carter	Scioto Co. ED Director	Scioto
Robert	Walton	Scioto Co CAA Executive Director	Scioto
Ken	Reed	Vinton Co Community Dev. Director	Vinton

OVRDC 2010 RLF Loan Committee			
First Name	Last Name	Organization	County
Judd	Johnson	Vice President, First State Bank	Adams
Raymond	Sininger	Fifth Third Bank	Brown
Jim	Huebner	Sr. VP River Hills Bank	Clermont
Bill	Cupp		Fayette
Marianne	Campbell	Gallia County CIC	Gallia
Mike	Rector		Highland
Fred	Mavis	VP, Ohio Valley Bank	Jackson
Cindy	Caskey	Ironton/Lawrence CAO	Lawrence
Ralph	Kline	Ironton/Lawrence CAO	Lawrence
Chris	Ervin	Business Development Director	Pike
Susan	Gearhart	Huntington National Bank	Ross
Lee	Powell, Jr.	President, DESCO Federal Credit Union	Scioto
Terri	Fetherolf	Vinton County Development Dept.	Vinton
Brian	Basil	MMM+B	

*EDA and ARC
Projects*

E
X
H
I
B
I
T
C

EDA FY'2011
Public Works, Economic Adjustment, and Technical Assistance Projects

PUBLIC WORKS & ECONOMIC DEVELOPMENT PROJECTS	TOTAL	EDA	OTHER
Project Title	COST	FUNDS	FUNDS
Pike County Manufacturing Center Sewerline Extension (Pike)	\$ 3,342,991	\$ 2,042,991	\$ 1,300,000
Hobart/Smith Drive Access Road (Highland)	\$ 5,000,000	\$ 2,500,000	\$ 2,500,000
The Point Industrial Park Intermodal Improvements	\$ 9,639,000	\$ 3,200,000	\$ 6,439,000

ECONOMIC ADJUSTMENT PROJECTS - SSED	TOTAL	EDA	OTHER
Project Title	COST	FUNDS	FUNDS
Fayette County Memorial Hospital Emergency Room Renovation (Fayette)	\$ 4,880,000	\$ 3,660,000	\$ 1,220,000
Tri-County Economic Recovery (Fayette, Highland, Clinton) planning	\$ 200,000	\$ 150,000	\$ 50,000

TECHNICAL ASSISTANCE PROJECTS	TOTAL	EDA	OTHER
Project Title	COST	FUNDS	FUNDS
Greenfield Alternative Energy Resource and Energy Center (Highland)	\$ 100,000	\$ 75,000	\$ 25,000

A motion was made by Jim Chalker to approve the FY'2011 EDA project package as is, and seconded by Tim Mitchell. All were in favor.

**ARC FY'2011
Area Development & Access Road Project Package**

#	Area Development Projects Project Title	Total Cost	ARC Funds	Other Funds
1	Oak Hill Water System Improvements (Jackson)	\$1,018,200	\$250,000	\$768,200
2	Village of Georgetown Possum Run Pump Station SSO Elimination (Brown)	\$1,200,000	\$250,000	\$950,000
3	Woodland Centers Electronic Health Records Project (Gallia)	\$156,225	\$109,358	\$46,867
4	Village of Coalton Water Distribution System Renovations (Jackson)	\$1,850,000	\$250,000	\$1,600,000
5	Adams County Regional Medical Center Gamma Ray Camera (Adams)	\$395,000	\$250,000	\$145,000
6	City of Greenfield Railroad Crossing Improvements Project (Highland)	\$235,000	\$117,500	\$117,500
7	Scioto County Center for Dental Wellness (Scioto)	\$247,482	\$143,700	\$103,782
8	Riverwalk Corporate Office Building (Lawrence)	\$6,759,995	\$203,169	\$6,226,826
9	12 Lead EKG Implementation Project (Ross)	\$357,143	\$250,000	\$107,143
10	Greenfield WWTP Improvements Project (Highland)	\$1,800,000	\$250,000	\$1,550,000
11	Williamsburg WWTP Upgrade (Clermont)	\$2,775,000	\$250,000	\$2,525,000
12	Holzer Energy and Water Conservation Project (Gallia)	\$1,139,925	\$250,000	\$889,925
13	Family Healthcare Center Expansion Project (Scioto)	\$86,950	\$43,475	\$43,475
14	Southern Hills Regional Fire Training Center (Brown)	\$275,300	\$137,650	\$137,650
15	Aberdeen Water Treatment Plant and Well Field Improvements (Brown)	\$2,300,000	\$250,000	\$2,050,000
16	South Ironton Industrial Park Access Road (Lawrence)	\$317,120	\$200,000	\$117,120
17	Adams County Wastewater Improvement Project (Adams)	\$1,856,000	\$250,000	\$1,606,000
18	City of Portsmouth Economic Development Phase I (Scioto)	\$800,000	\$150,000	\$650,000
19	West Portsmouth Water Storage Tank Project (Scioto)	\$500,000	\$250,000	\$250,000
20	Working Together to Build Stronger Communities in Appalachia (Scioto)	\$250,000	\$175,000	\$75,000

A motion was made by Ken Reed to approve the FY'2011 Area Development project package as is, and seconded by Kelly Cole. All were in favor.

#	Access Road Projects Project Title	Total Cost	ARC Funds	Other Funds
1	CR 9 & McCarty Lane/U.S. 35 Grade Separation (Jackson)	\$5,795,000	\$300,000	\$5,495,000
2	Hobart/Smith Drive Access Road (Highland)	\$5,000,000	\$500,000	\$4,500,000

A motion was made by Dean Otworth to approve the FY'2011 Access Road project package as is, and seconded by Tim Mitchell. All were in favor.

**ARC FY'2011
Distressed County Project Package**

#	Distressed County Projects Project Title	Total Cost	ARC Funds	Other Funds
1	City of Waverly Bridge Street Sanitary Sewer Main Rehabilitation Project (Pike)	\$900,000	\$200,000	\$700,000
2	Fairview, Hutt, and Benson Road Waterlines (Vinton)	\$313,000	\$250,000	\$63,000
3	Village of Piketon Water System Improvements (Pike)	\$1,115,000	\$250,000	\$865,000
4	Zaleski Water Main Replacement (Vinton)	\$123,000	\$98,400	\$24,600
5	Pike Health Services Pysix Medication Management/Patient Safety (Pike)	\$303,560	\$242,848	\$60,712

A motion was made by Ken Reed to approve the FY'2011 Distressed County project package as is, and seconded by Pete Wilkes. All were in favor.

*County
Resolutions*

E
X
H
I
B
I
T
D

**RESOLUTION
OF THE
OHIO VALLEY REGIONAL DEVELOPMENT COMMISSION**

WHEREAS, the Ohio Valley Regional Development Commission has prepared a 2010 Comprehensive Economic Development Strategy (CEDS) Performance Report for submission to the U.S. Department of Commerce, Economic Development Administration, in compliance with the Public Works and Economic Development Act of 1965, as amended including the comprehensive amendment made by the Economic Development Administration Reauthorization Act of 2004; and

WHEREAS, the Ohio Valley Regional Development Commission has developed the Comprehensive Economic Development Strategy (CEDS) as its guiding plan and process to assist in alleviating the economic distress, unemployment and under-employment that have restricted economic growth in the District; and

WHEREAS, an approved CEDS Performance Report meets one of the requirements for continued designation as an Economic Development District and for qualifying the area to receive EDA federal assistance consistent with the District's objectives and priorities for locally initiated projects; and

WHEREAS, the CEDS Committee has reviewed and approved the CEDS Performance Report and member counties of the Ohio Valley Regional Development Commission have formally adopted the Comprehensive Economic Development Strategy as the basic guide for economic development within their counties.

NOW, THEREFORE, BE IT RESOLVED that the Executive Committee of Ohio Valley Regional Development Commission hereby authorizes the submission of the CEDS Performance Report to the U.S. Department of Commerce, Economic Development Administration for their review and approval.

BE IT FURTHER RESOLVED that a copy of the CEDS and this resolution will be forwarded to the Appalachian Regional Commission and to other appropriate agencies, member governments or other interested persons.

ADOPTED THIS 18TH DAY OF NOVEMBER 2010

Signed:


Robert L. Proud, Chairman

Witnessed:


John W. Hemmings III, Executive Director &
Commission Secretary

RESOLUTION

JUN 7 2010

Resolution No: 2010-297
Date: June 2, 2010

WHEREAS, The Adams County Board of Commissioners actively supports and currently participates in the economic development district activities of the Ohio Valley Regional Development Commission (OVRDC). OVRDC is a public regional planning commission within the State of Ohio, whose purpose is to influence favorably the future economic, physical, and social development of the twelve-county region through its regional development planning programs and technical assistance; and

WHEREAS, the Ohio Valley Regional Development Commission promotes a cooperative planning process involving local governments, public and private agencies, and individual citizens, toward improving their region within a democratic process; and

WHEREAS, the Adams County Board of Commissioners hereby endorses the 2010 Comprehensive Economic Development Strategy (CEDS), prepared by the Ohio Valley Regional Development Commission.

THEREFORE, BE IT RESOLVED, that the Adams County Board of Commissioners hereby authorizes an appropriation of funds in the amount of \$4,767.00 as participating local funds for the Ohio Valley Regional Development Commission to be used as part of the agency budget for the fiscal year beginning January 1, 2011. The appropriated funds to be paid on or after January 1, 2011, and

NOW, THEREFORE, BE IT FURTHER RESOLVED, the Adams County Board of Commissioners continues to support the Ohio Valley Regional Development Commission's Economic Development District planning partnership investment grant program with the USDOC Economic Development Administration for the annual performance period January 1, 2011 through December 31, 2011.

Mr. Brian Baldrige moved the adoption of the Resolution and the motion was seconded by Roger Rhonemus.

The Adams County Board of Commissioners hereby adopts this resolution on the 2nd day of June, 2010.

By: JUSTIN COOPER
Chairman, Adams County Board of Commissioners (print or type name)

Signed: [Signature]

Dated: 6/2/10

Certified By: DIANE WARD
Adams County Board of Commissioners, Clerk (print or type name)

Signed: [Signature]

Dated: June 2, 2010



RESOLUTION

Resolution No: 08182010-1
Date: August 18, 2010

WHEREAS, The Brown County Board of Commissioners actively supports and currently participates in the economic development district activities of the Ohio Valley Regional Development Commission (OVRDC). OVRDC is a public regional planning commission within the State of Ohio, whose purpose is to influence favorably the future economic, physical, and social development of the twelve-county region through its regional development planning programs and technical assistance; and

WHEREAS, the Ohio Valley Regional Development Commission promotes a cooperative planning process involving local governments, public and private agencies, and individual citizens, toward improving their region within a democratic process; and

WHEREAS, the Brown County Board of Commissioners hereby endorses the 2010 Comprehensive Economic Development Strategy (CEDS), prepared by the Ohio Valley Regional Development Commission.

THEREFORE, BE IT RESOLVED, that the Brown County Board of Commissioners hereby authorizes an appropriation of funds in the amount of \$7,481.00 as participating local funds for the Ohio Valley Regional Development Commission to be used as part of the agency budget for the fiscal year beginning January 1, 2011. The appropriated funds to be paid on or after January 1, 2011, and

NOW, THEREFORE, BE IT FURTHER RESOLVED, the Brown County Board of Commissioners continues to support the Ohio Valley Regional Development Commission's Economic Development District planning partnership investment grant program with the USDOC Economic Development Administration for the annual performance period January 1, 2011 through December 31, 2011.

M. Ralph Jennings moved the adoption of the Resolution and the motion was seconded by William Hedwood.

The Brown County Board of Commissioners hereby adopts this resolution on the 18th day of August, 2010.

By: Margery Laetty MARGERY LAETTY
Chairman, Brown County Board of Commissioners (print or type name)

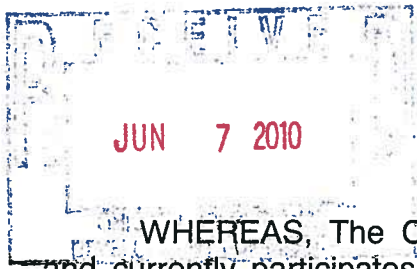
Signed: Margery Laetty

Dated: Aug 18, 2010

Certified By: Jean Richey
Brown County Board of Commissioners, Clerk (print or type name)

Signed: Jean Richey

Dated: 8/18/2010



RESOLUTION

Resolution No: 81-10

Date: June 2, 2010

WHEREAS, The Clermont County Board of Commissioners actively supports and currently participates in the economic development district activities of the Ohio Valley Regional Development Commission (OVRDC). OVRDC is a public regional planning commission within the State of Ohio, whose purpose is to influence favorably the future economic, physical, and social development of the twelve-county region through its regional development planning programs and technical assistance; and

WHEREAS, the Ohio Valley Regional Development Commission promotes a cooperative planning process involving local governments, public and private agencies, and individual citizens, toward improving their region within a democratic process; and

WHEREAS, the Clermont County Board of Commissioners hereby endorses the 2010 Comprehensive Economic Development Strategy (CEDS), prepared by the Ohio Valley Regional Development Commission.

THEREFORE, BE IT RESOLVED, that the Clermont County Board of Commissioners hereby authorizes an appropriation of funds in the amount of \$33,382.00 as participating local funds for the Ohio Valley Regional Development Commission to be used as part of the agency budget for the fiscal year beginning January 1, 2011. The appropriated funds to be paid on or after January 1, 2011, and

NOW, THEREFORE, BE IT FURTHER RESOLVED, the Clermont County Board of Commissioners continues to support the Ohio Valley Regional Development Commission's Economic Development District planning partnership investment grant program with the USDOC Economic Development Administration for the annual performance period January 1, 2011 through December 31, 2011.

Mr. Croswell moved the adoption of the Resolution and the motion was seconded by Mr. Proud.

The Clermont County Board of Commissioners hereby adopts this resolution on the 2nd day of June, 2010.

By: Robert L. Proud
Chairman, Clermont County Board of Commissioners (print or type name)

Signed: Robert L. Proud

Dated: 6-2-10

Certified By: Sudith Kocica
Clermont County Board of Commissioners, Clerk (print or type name)

Signed: Sudith Kocica

Dated: June 2, 2010



RESOLUTION

Resolution No: --
Date: June 28, 2010

WHEREAS, The Fayette County Board of Commissioners actively supports and currently participates in the economic development district activities of the Ohio Valley Regional Development Commission (OVRDC). OVRDC is a public regional planning commission within the State of Ohio, whose purpose is to influence favorably the future economic, physical, and social development of the twelve-county region through its regional development planning programs and technical assistance; and

WHEREAS, the Ohio Valley Regional Development Commission promotes a cooperative planning process involving local governments, public and private agencies, and individual citizens, toward improving their region within a democratic process; and

WHEREAS, the Fayette County Board of Commissioners hereby endorses the 2010 Comprehensive Economic Development Strategy (CEDs), prepared by the Ohio Valley Regional Development Commission.

THEREFORE, BE IT RESOLVED, that the Fayette County Board of Commissioners hereby authorizes an appropriation of funds in the amount of \$4,780.00 as participating local funds for the Ohio Valley Regional Development Commission to be used as part of the agency budget for the fiscal year beginning January 1, 2011. The appropriated funds to be paid on or after January 1, 2011, and

NOW, THEREFORE, BE IT FURTHER RESOLVED, the Fayette County Board of Commissioners continues to support the Ohio Valley Regional Development Commission's Economic Development District planning partnership investment grant program with the USDOC Economic Development Administration for the annual performance period January 1, 2011 through December 31, 2011.

Mr. Peterson moved the adoption of the Resolution and the motion was seconded by Mr. DeWeese.

The Fayette County Board of Commissioners hereby adopts this resolution on the 28th day of June, 2010.

By: Jack DeWeese,
Vice-Chairman, Fayette County Board of Commissioners (print or type name)

Signed: *Jack DeWeese*

Dated: June 28, 2010

Certified By: Judy Rambo
Fayette County Board of Commissioners, Clerk (print or type name)

Signed: *Judy Rambo*

Dated: June 28, 2010



RESOLUTION

Resolution No: NA
Date: 6-10-2010

WHEREAS, The Gallia County Board of Commissioners actively supports and currently participates in the economic development district activities of the Ohio Valley Regional Development Commission (OVRDC). OVRDC is a public regional planning commission within the State of Ohio, whose purpose is to influence favorably the future economic, physical, and social development of the twelve-county region through its regional development planning programs and technical assistance; and

WHEREAS, the Ohio Valley Regional Development Commission promotes a cooperative planning process involving local governments, public and private agencies, and individual citizens, toward improving their region within a democratic process; and

WHEREAS, the Gallia County Board of Commissioners hereby endorses the 2010 Comprehensive Economic Development Strategy (CEDS), prepared by the Ohio Valley Regional Development Commission.

THEREFORE, BE IT RESOLVED, that the Gallia County Board of Commissioners hereby authorizes an appropriation of funds in the amount of \$5,218.00 as participating local funds for the Ohio Valley Regional Development Commission to be used as part of the agency budget for the fiscal year beginning January 1, 2011. The appropriated funds to be paid on or after January 1, 2011, and

NOW, THEREFORE, BE IT FURTHER RESOLVED, the Gallia County Board of Commissioners continues to support the Ohio Valley Regional Development Commission's Economic Development District planning partnership investment grant program with the USDOC Economic Development Administration for the annual performance period January 1, 2011 through December 31, 2011.

M JUSTIN FALLON moved the adoption of the Resolution and the motion was seconded by LOIS SNYDER.

The Gallia County Board of Commissioners hereby adopts this resolution on the 10 day of JUNE, 2010.

By: HOWARD J. FOSTER
Chairman, Gallia County Board of Commissioners (print or type name)

Signed: Howard J. Foster

Dated: JUNE 10, 2010

Certified By: TERRY HEMBLY
Gallia County Board of Commissioners, Clerk (print or type name)

Signed: Terry Hembly

Dated: JUNE 10, 2010



RESOLUTION

Resolution No: 10-156
Date: 06-02-10

WHEREAS, The Highland County Board of Commissioners actively supports and currently participates in the economic development district activities of the Ohio Valley Regional Development Commission (OVRDC). OVRDC is a public regional planning commission within the State of Ohio, whose purpose is to influence favorably the future economic, physical, and social development of the twelve-county region through its regional development planning programs and technical assistance; and

WHEREAS, the Ohio Valley Regional Development Commission promotes a cooperative planning process involving local governments, public and private agencies, and individual citizens, toward improving their region within a democratic process; and

WHEREAS, the Highland County Board of Commissioners hereby endorses the 2010 Comprehensive Economic Development Strategy (CEDs), prepared by the Ohio Valley Regional Development Commission.

THEREFORE, BE IT RESOLVED, that the Highland County Board of Commissioners hereby authorizes an appropriation of funds in the amount of \$7,170.00 as participating local funds for the Ohio Valley Regional Development Commission to be used as part of the agency budget for the fiscal year beginning January 1, 2011. The appropriated funds to be paid on or after January 1, 2011, and

NOW, THEREFORE, BE IT FURTHER RESOLVED, the Highland County Board of Commissioners continues to support the Ohio Valley Regional Development Commission's Economic Development District planning partnership investment grant program with the USDOC Economic Development Administration for the annual performance period January 1, 2011 through December 31, 2011.

M Mr. Horst moved the adoption of the Resolution and the motion was seconded by Mr. Heaton.

The Highland County Board of Commissioners hereby adopts this resolution on the 2nd day of June, 2010.

By: Shane Wilkin
Chairman, Highland County Board of Commissioners (print or type name)

Signed: Shane Wilkin

Dated: 6-2-10

Certified By: Debbie Sansone
Highland County Board of Commissioners, Clerk (print or type name)

Signed: Debbie Sansone

Dated: 6-2-10

RESOLUTION

AUG 25 2010

Resolution No: 233-10
Date: August 24, 2010

WHEREAS, The Jackson County Board of Commissioners actively supports and currently participates in the economic development district activities of the Ohio Valley Regional Development Commission (OVRDC). OVRDC is a public regional planning commission within the State of Ohio, whose purpose is to influence favorably the future economic, physical, and social development of the twelve-county region through its regional development planning programs and technical assistance; and

WHEREAS, the Ohio Valley Regional Development Commission promotes a cooperative planning process involving local governments, public and private agencies, and individual citizens, toward improving their region within a democratic process; and

WHEREAS, the Jackson County Board of Commissioners hereby endorses the 2010 Comprehensive Economic Development Strategy (CEDS), prepared by the Ohio Valley Regional Development Commission.

THEREFORE, BE IT RESOLVED, that the Jackson County Board of Commissioners hereby authorizes an appropriation of funds in the amount of \$5,685.00 as participating local funds for the Ohio Valley Regional Development Commission to be used as part of the agency budget for the fiscal year beginning January 1, 2011. The appropriated funds to be paid on or after January 1, 2011, and

NOW, THEREFORE, BE IT FURTHER RESOLVED, the Jackson County Board of Commissioners continues to support the Ohio Valley Regional Development Commission's Economic Development District planning partnership investment grant program with the USDOC Economic Development Administration for the annual performance period January 1, 2011 through December 31, 2011.

Mr. Edmund Armstrong moved the adoption of the Resolution and the motion was seconded by Mr. James P. Riepenhoff.

The Jackson County Board of Commissioners hereby adopts this resolution on the 24th day of August, 2010.

By: James P. Riepenhoff
Chairman, Jackson County Board of Commissioners (print or type name)

Signed: [Signature]

Dated: August 24, 2010

Certified By: Marie Callahan
Jackson County Board of Commissioners, ~~Clerk~~ (print or type name) Administrative Assistant

Signed: Marie Callahan

Dated: August 24, 2010

RESOLUTION

AUG 31 2010

Resolution No: _____

Date: _____

WHEREAS, The Lawrence County Board of Commissioners actively supports and currently participates in the economic development district activities of the Ohio Valley Regional Development Commission (OVRDC). OVRDC is a public regional planning commission within the State of Ohio, whose purpose is to influence favorably the future economic, physical, and social development of the twelve-county region through its regional development planning programs and technical assistance; and

WHEREAS, the Ohio Valley Regional Development Commission promotes a cooperative planning process involving local governments, public and private agencies, and individual citizens, toward improving their region within a democratic process; and

WHEREAS, the Lawrence County Board of Commissioners hereby endorses the 2010 Comprehensive Economic Development Strategy (CEDS), prepared by the Ohio Valley Regional Development Commission.

THEREFORE, BE IT RESOLVED, that the Lawrence County Board of Commissioners hereby authorizes an appropriation of funds in the amount of \$10,666.00 participating local funds for the Ohio Valley Regional Development Commission to be used as part of the agency budget for the fiscal year beginning January 1, 2011. The appropriated funds to be paid on or after January 1, 2011, and

NOW, THEREFORE, BE IT FURTHER RESOLVED, the Lawrence County Board of Commissioners continues to support the Ohio Valley Regional Development Commission's Economic Development District planning partnership investment grant program with the USDOC Economic Development Administration for the annual performance period January 1, 2011 through December 31, 2011.

MR. Stephens moved the adoption of the Resolution and the motion was seconded by Mr. Bagg.

The Lawrence County Board of Commissioners hereby adopts this resolution on the 26 day of August, 2010.

By: Jason Stephens
Chairman, Lawrence County Board of Commissioners (print or type name)

Signed: [Signature]

Dated: August 27, 2010

Certified By: Tami Meade Tami Meade
Lawrence County Board of Commissioners, Clerk (print or type name)

Signed: Tami Meade

Dated: August 26, 2010

RESOLUTION

Resolution No: 429-10

Date: May 27, 2010

WHEREAS, The Pike County Board of Commissioners actively supports and currently participates in the economic development district activities of the Ohio Valley Regional Development Commission (OVRDC). OVRDC is a public regional planning commission within the State of Ohio, whose purpose is to influence favorably the future economic, physical, and social development of the twelve-county region through its regional development planning programs and technical assistance; and

WHEREAS, the Ohio Valley Regional Development Commission promotes a cooperative planning process involving local governments, public and private agencies, and individual citizens, toward improving their region within a democratic process; and

WHEREAS, the Pike County Board of Commissioners hereby endorses the 2010 Comprehensive Economic Development Strategy (CEDS), prepared by the Ohio Valley Regional Development Commission.

THEREFORE, BE IT RESOLVED, that the Pike County Board of Commissioners hereby authorizes an appropriation of funds in the amount of \$4,713.00 as participating local funds for the Ohio Valley Regional Development Commission to be used as part of the agency budget for the fiscal year beginning January 1, 2011. The appropriated funds to be paid on or after January 1, 2011, and

NOW, THEREFORE, BE IT FURTHER RESOLVED, the Pike County Board of Commissioners continues to support the Ohio Valley Regional Development Commission's Economic Development District planning partnership investment grant program with the USDOC Economic Development Administration for the annual performance period January 1, 2011 through December 31, 2011.

M Mr. Beckman moved the adoption of the Resolution and the motion was seconded by Teddy West.

The Pike County Board of Commissioners hereby adopts this resolution on the 27th day of May, 2010.

By: Harry A. Rider
Chairman, Pike County Board of Commissioners (print or type name)

Signed: Harry A Rider

Dated: 5-27-10

Certified By: April Elliott
Pike County Board of Commissioners, Clerk (print or type name)

Signed: April Elliott

Dated: 5-27-10

RESOLUTION

AUG 26 2010

Resolution No: 10-138
Date: August 23, 2010

WHEREAS, The Ross County Board of Commissioners actively supports and currently participates in the economic development district activities of the Ohio Valley Regional Development Commission (OVRDC). OVRDC is a public regional planning commission within the State of Ohio, whose purpose is to influence favorably the future economic, physical, and social development of the twelve-county region through its regional development planning programs and technical assistance; and

WHEREAS, the Ohio Valley Regional Development Commission promotes a cooperative planning process involving local governments, public and private agencies, and individual citizens, toward improving their region within a democratic process; and

WHEREAS, the Ross County Board of Commissioners hereby endorses the 2010 Comprehensive Economic Development Strategy (CEDS), prepared by the Ohio Valley Regional Development Commission.

THEREFORE, BE IT RESOLVED, that the Ross County Board of Commissioners hereby authorizes an appropriation of funds in the amount of \$6,458.00 as participating local funds for the Ohio Valley Regional Development Commission to be used as part of the agency budget for the fiscal year beginning January 1, 2011. The appropriated funds to be paid on or after January 1, 2011, and

NOW, THEREFORE, BE IT FURTHER RESOLVED, the Ross County Board of Commissioners continues to support the Ohio Valley Regional Development Commission's Economic Development District planning partnership investment grant program with the USDOC Economic Development Administration for the annual performance period January 1, 2011 through December 31, 2011.

Mr. Corcoran moved the adoption of the Resolution and the motion was seconded by Mr. Caldwell.

The Ross County Board of Commissioners hereby adopts this resolution on the 23rd day of August, 2010.

By: James M. Caldwell, President
Chairman, Ross County Board of Commissioners (print or type name)

Signed: 

Dated: 8/23/10

Certified By: Gail L. Stout, Clerk
Ross County Board of Commissioners, Clerk (print or type name)

Signed: 

Dated: August 23, 2010



Proposed by:
Development Committee

RESOLUTION NO. 18-10

A RESOLUTION AUTHORIZING THE APPROPRIATION OF FUNDS IN THE AMOUNT OF \$6,458.00 AS PARTICIPATING LOCAL FUNDS FOR 2011, TO THE OHIO VALLEY REGIONAL DEVELOPMENT COMMISSION ON BEHALF OF THE CITY OF CHILLICOTHE, OHIO, AND DECLARING AN EMERGENCY.

WHEREAS, the City of Chillicothe actively supports and currently participates in the economic development district activities of the Ohio Valley Regional Development Commission (OVRDC), a regional economic development planning district within the State of Ohio whose purpose is to influence favorably the future economic, physical, and social development of the twelve-county region through its regional development planning programs and technical assistance; and,

WHEREAS, the OVRDC promotes a cooperative planning process involving local governments, public and private agencies, and individual citizens, toward improving their region within a democratic process; and,

WHEREAS, the Council of the City of Chillicothe endorses the 2011 Comprehensive Economic Development Strategy (CEDs), prepared by the OVRDC; now, therefore,

BE IT RESOLVED BY THE COUNCIL OF THE CITY OF CHILLICOTHE, STATE OF OHIO:

SECTION 1. The Council of the City of Chillicothe hereby supports the Ohio Valley Regional Development Commission's application to the Economic Development Administration for planning funds for the period of January 1, 2011 through December 31, 2011.

SECTION 2. The Council of the City of Chillicothe hereby authorizes an appropriation of funds in the amount of \$6,458.00 as participating local funds for the Ohio Valley Regional Development Commission to be used as part of the agency budget for the fiscal year beginning in January 1, 2011. The appropriated funds are to be paid on or after January 1, 2011.

SECTION 3. This Resolution is hereby declared to be an emergency measure necessary for the immediate preservation of the public health, safety, and welfare. The reason for such necessity is that the Ohio Valley Regional Development Commission must have their financial commitments for the year 2011 at the earliest possible date. Therefore this Resolution shall go into immediate effect.

Passed: Oct. 11 2010

PRESIDENT OF COUNCIL

Attest:

CLERK OF COUNCIL

Approved: Oct. 11, 2010

FILED WITH THE MAYOR:

MAYOR

Oct. 11, 2010

Voting "yea" were the following members of Council: Ames, Cross, Lester, Malone, Patrick, Proehl and Trutschel. (Sharp and Sibereff voted "nay".)

RESOLUTION

AUG 26 2010

Resolution No: _____

Date: 08/24/10

WHEREAS, The Scioto County Board of Commissioners actively supports and currently participates in the economic development district activities of the Ohio Valley Regional Development Commission (OVRDC). OVRDC is a public regional planning commission within the State of Ohio, whose purpose is to influence favorably the future economic, physical, and social development of the twelve-county region through its regional development planning programs and technical assistance; and

WHEREAS, the Ohio Valley Regional Development Commission promotes a cooperative planning process involving local governments, public and private agencies, and individual citizens, toward improving their region within a democratic process; and

WHEREAS, the Scioto County Board of Commissioners hereby endorses the 2010 Comprehensive Economic Development Strategy (CEDS), prepared by the Ohio Valley Regional Development Commission.

THEREFORE, BE IT RESOLVED, that the Scioto County Board of Commissioners hereby authorizes an appropriation of funds in the amount of \$12,977.00 as participating local funds for the Ohio Valley Regional Development Commission to be used as part of the agency budget for the fiscal year beginning January 1, 2011. The appropriated funds to be paid on or after January 1, 2011, and

NOW, THEREFORE, BE IT FURTHER RESOLVED, the Scioto County Board of Commissioners continues to support the Ohio Valley Regional Development Commission's Economic Development District planning partnership investment grant program with the USDOC Economic Development Administration for the annual performance period January 1, 2011 through December 31, 2011.

Mr. Crabtree moved the adoption of the Resolution and the motion was seconded by Mr. Riffe.

The Scioto County Board of Commissioners hereby adopts this resolution on the 24th day of August, 2010.

By: Tom Reiser
Chairman, Scioto County Board of Commissioners (print or type name)

Signed: _____

Dated: 08/24/10

Certified By: Jane Kitts
Scioto County Board of Commissioners, Clerk (print or type name)

Signed: Jane Kitts

Dated: 08/24/10

JUN 8 2010

RESOLUTION

Resolution No: 06-07-10

Date: June 7, 2010

WHEREAS, The Vinton County Board of Commissioners actively supports and currently participates in the economic development district activities of the Ohio Valley Regional Development Commission (OVRDC). OVRDC is a public regional planning commission within the State of Ohio, whose purpose is to influence favorably the future economic, physical, and social development of the twelve-county region through its regional development planning programs and technical assistance; and

WHEREAS, the Ohio Valley Regional Development Commission promotes a cooperative planning process involving local governments, public and private agencies, and individual citizens, toward improving their region within a democratic process; and

WHEREAS, the Vinton County Board of Commissioners hereby endorses the 2010 Comprehensive Economic Development Strategy (CEDS), prepared by the Ohio Valley Regional Development Commission.

THEREFORE, BE IT RESOLVED, that the Vinton County Board of Commissioners hereby authorizes an appropriation of funds in the amount of \$2,249.00 as participating local funds for the Ohio Valley Regional Development Commission to be used as part of the agency budget for the fiscal year beginning January 1, 2011. The appropriated funds to be paid on or after January 1, 2011, and

NOW, THEREFORE, BE IT FURTHER RESOLVED, the Vinton County Board of Commissioners continues to support the Ohio Valley Regional Development Commission's Economic Development District planning partnership investment grant program with the USDOC Economic Development Administration for the annual performance period January 1, 2011 through December 31, 2011.

Mr. Bledsoe moved the adoption of the Resolution and the motion was seconded by Mr. Zinn.

The Vinton County Board of Commissioners hereby adopts this resolution on the 7th day of June, 2010.

By: Jerry Zinn
Chairman, Vinton County Board of Commissioners (print or type name)

Signed: [Signature]

Dated: June 7, 2010

Certified By: Angela Horn
Vinton County Board of Commissioners, Clerk (print or type name)

Signed: [Signature]

Dated: June 7, 2010

*Private
Investment List
& WARN
Notices*

E
X
H
I
B
I
T
E

2009 Ohio Private Investment List

Region	County	Company	City	SIC	Product	Type	Jobs	Investment	Square Feet	New	Exp
4	Clinton	Airborne Maintenance and Engineering	Wilmington	336411	Aircraft	Mfg	430	\$5,700,000		New	
1	Fayette	Bluegrass Farms of Ohio	Jeffersonville	48821	Intermodal facility	Dist	5	\$10,000,000		New	
1	Fayette	Heartland Inc	Washington CH	42151	Steel processing	Mfg/Dist	15	\$6,000,000	60,000	New	
5	Clermont	Cold Jet	Milford	32512	Dry ice	Mfg	14	\$2,500,000	14,600	New	
5	Clermont	Patriot Industrial Contracting	Milford	81131	Welding & fabrication	Mfg	6	\$1,400,000	32,000	New	
7	Jackson	General Mills	Wellston	311412	Frozen foods	Mfg	70	\$70,000,000	34,000		Exp
7	Lawrence	Lawrence Economic Development	South Point	484121	Intermodal facility	Dist		\$5,100,000		New	
7	Ross	Infosight Corp	Chillicothe	339943	Marking devices	Mfg		\$1,000,000	18,000		Exp
7	Scioto	Lute Plumbing Supply Inc	Portsmouth	42372	Plumbing products	Dist			38,000	New	
	OVRDC Total	8					110	\$96,000,000	196,600	6	2
	State Totals	364					16,768	\$3,433,994,000	11,296,300		

Source: Office of Strategic Research, OHIO PRIVATE INVESTMENT SURVEY

WARN Notices (Worker Adjustment Retraining Notification (WARN) Act)

Date Rcd	Company	City	# Affected	Layoff Date	Phone Number	Union	WARN ID
8/7/2006	M & J Industries L.L.C.	Lucasville	253	8/18/2006	(740) 259-6444	UNITE HERE	001-06-009
6/28/1905	Advance Stores Company	Jeffersonville	77	4/15/2006	(540) 561-3558	None	007-05-062
6/30/2006	Cedar Works	Peebles	84	9/1/2006	(937) 587-2656, Ext. 103	None	001-05-108
2006		OVRDC	414				
8/8/2007	Meridian Automotive Systems, Inc.	Jackson	141	8/19/2007	(616) 527-8686	USW	007-07-015
3/19/2007	Meridian Automotive Systems, Inc.	Jackson	131	5/17/2007	(616) 527-8686	USWA	007-06-074
3/7/2007	Greenfield Research, Inc.	Greenfield	100	4/23/2007	(937) 981-7763	None	007-06-071
2007		OVRDC	372				
10/20/2008	3M Precision Optics	Cincinnati (Clermont)	106	10/17/2008	(513) 753-2092	None	012-08-046
3/26/2008	Ford Motor Company Batavia Transmissions, LLC	Batavia (Clermont)	782	5/30/2008	(513) 732-4131	UAW	012-07-089
2/13/2008	NewPage	Chillicothe (Ross)	169	5/30/08 until end of 2008 closure	(715) 422-3736	USW Local #9588	020-07-076
2/7/2008	Georgia-Pacific Corrugated LLC	Batavia (Clermont)	110	4/7/2008	(513) 536-3040	USWA	012-07-075
2/7/2008	3M Precision Optics	Cincinnati (Clermont)	78	3/31/2008	(513) 943-5487	None	012-007-074
10/20/2008	3M Precision Optics	Cincinnati (Clermont)	106	10/17/2008	(513) 753-2092	None	012-08-046
2008		OVRDC	1,351				
12/30/2009	CDG Management & Civic Development Group, LLC	Portsmouth (Scioto)	36	12/31/2009	(732) 512-9800 ext 1149	None	001-09-073
12/30/2009	CDG Management & Civic Development Group, LLC	Wellston (Jackson)	46	12/31/2009	(732) 512-9800 ext 1149	None	007-08-072
8/11/2009	Kmart	South Point (Lawrence)	60	11/8/2009	(847) 286-2500	None	007-09-024
5/12/2009	Johnson Controls, Inc.	Greenfield (Highland)	205	Begins 7/17/09 until 9/15/09 (or 2 wks. after)	(937) 981-2176 ext. 6539	UAW Local #1842	007-08-198
4/27/2009	Weastec, Inc.	Greensboro/Hillsboro (Highland)	326	Began 1/09 until December '09	(937) 840-1197	None	007-08-182
4/20/2009	Mark Andy, Inc.	Milford (Clermont)	58	Begins 6/19/09 until 10/9/09	(513) 965-5615	None	012-08-180
2/5/2009	MeadWestVaco, Inc.	Washington C.H. (Fayette)	316	4/6/2009	(740) 636-4030	GCC/IBT Local #508-M	007-08-119
2009		OVRDC	1,047				
3/30/2010	bigg's (Milford)	Milford (Clermont)	79	per WARN "in the near future"	(513) 248-9300	None	012-09-116
3/30/2010	bigg's (Eastgate)	Cincinnati (Clermont)	104	per WARN "in the near future"	(513) 248-9300	None	012-09-112
3/23/2010	Victory Industrial Products, LLC (Victor)	Batavia (Clermont)	159	3/17/2010	(312) 629-8585	None	012-09-111
2/11/2010	Kmart	Milford (Clermont)	46	Begins 4/6/10 until 5/17/10	(847) 286-1427	None	012-09-097
2/8/2010	CSC (MTESS)	Jeffersonville (Fayette)	79	6/30/2010	(740) 426-6100	APWU Local #164	007-09-090
2009		OVRDC	467				
OVRDC Total			3,651				

Source: Ohio Department of Job & Family Services -- Worker Adjustment Retraining Notification (WARN) Act -- <http://jfs.ohio.gov/warn/>

*Executive
Director's
Annual Report*

**E
X
H
I
B
I
T
F**

Ohio Valley Regional Development Commission

2009 Annual Report



9329 State Route 220 East, Suite A
Waverly, OH 45690-9012
Phone: (740) 947-2853
Toll Free: (800) 223-7491 (in Ohio)
Fax: (740) 947-3468
Website: www.ovrdc.org

Message from the Chairman

First, let me thank all twelve of our member counties for their continued commitment to making the OVRDC region a place in which we are all proud to live, work and raise our families. Without your dedication and sense of duty to this region the accomplishments which have been made would not have been possible.

2009 continued to be a turbulent year of equal progress and challenges for all. Revenues continued to decrease while unemployment increased giving rise to TEAM OVRDC getting creative with solutions which would best serve our communities. You will find throughout the annual report much success with securing funding within our counties and accomplishments made in both creating and retaining jobs in our region. We strengthened our partnerships with local, state and federal agencies in order to maximize our efforts at protecting and enhancing the health and future of our communities.

OVRDC remains focused on our dedication to and partnership with every member of the OVRDC family. On behalf of the Executive Committee we would like to thank you personally for your commitment to enabling our region to stay strong and fully invested in the future. While we work through these challenging economic times, it's good to know we stand together in promoting the best local development district in the nation. Thanks so much and may God bless!



Bob Proud
OVRDC Chairman,
Clermont County Commissioner

Message from the Executive Director

When I think back about 2009, I am reminded of all of the major collaborative efforts in which the Ohio Valley Regional Development Commission (OVRDC) was involved. We worked closely with the other Ohio Local Development Districts (LDDs) to support Connecting Appalachia to bring better broadband access to the OVRDC and Appalachia Ohio region. We also worked closely with the Buckeye Hills-Hocking Valley Regional Development District in the development of the SR 32/US 50/US 35 Corridor Study. In addition, we worked closely with the Ohio LDDs on visits with our Congressional leaders as well as jointly hosting a Legislative Reception for our leaders in the Ohio General Assembly.



John W. Hemmings III
OVRDC Executive Director

Due to the economic impact on some of our member counties, we even reached out to assist our neighbors in Clinton County with responding to the DHL Airpark closure in Wilmington, Ohio. As always, our member counties continued to work collaboratively as a region to develop a Comprehensive Economic Development Strategy (CEDS), and in seeking and securing Appalachian Regional Commission (ARC), Economic Development Administration (EDA), and Ohio Public Works Commission (OPWC) funds for local projects. OVRDC appreciates our member counties' commitment to this level of cooperation.

OVRDC is pleased to present you this 2009 Annual Report which outlines our collaborative accomplishments over this past year. We are aware that our success is only possible through the support of our member counties, our membership, our federal and state partners, and other key partners in the region. Thank you and OVRDC looks forward to continued collaboration and cooperation in 2010.

SR32/ US50/ US 35 Corridor Study

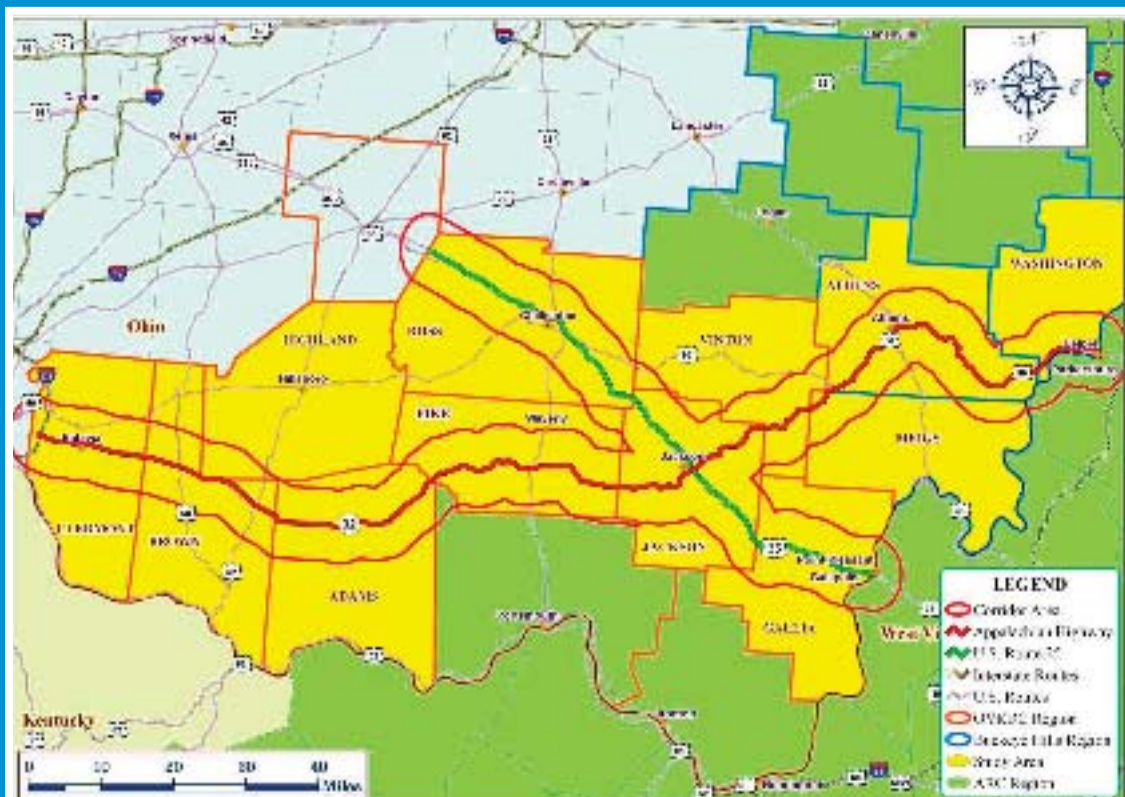
In 2009, OVRDC finished its work on the State Route 32/US 50/US 35 Corridor Study, which was funded by the Governor's Office of Appalachia. The major purpose of this study and planning effort was to maximize the economic development potential of the SR32/US50 and US35 corridor to create new jobs in southern and southeastern Ohio. This goal was addressed through doing a comprehensive study of the corridor that ascertains current demand on the corridor by existing major employers and other major trip generators and potential future generators, such as existing industrial parks and commercial sites. The study also inventories and maps existing water and sewer infrastructure that is available along the corridor. In addition, the corridor plan designates the best possible future industrial and commercial development sites in terms of access and available infrastructure, as well as designates environmentally sensitive areas.

This corridor study covers 12 counties in southern Ohio. It covers the 10 counties that are located on SR 32/US 50 from Clermont to Washington County (Appalachian Highway Corridor D). In addition, it also includes 2 counties on US 35 Ross and Gallia, (Corridor C-1) which intersects SR 32 in Jackson County.

Based on the analysis conducted for this study, the following recommendations are proposed:

- 1) Creation and maintenance of a regional website for marketing available industrial sites and buildings
- 2) Increase and maintain dialogue between business and education officials
- 3) Proactive land use planning implemented throughout region
- 4) Development of a corridor access plan by transportation and development officials

The final study and maps are available for download through OVRDC's website www.ovrdc.org; for hard copies of the report and maps or a DVD, contact Ohio Valley Regional Development Commission.



Economic Recovery Strategy Work Begins

In 2009, OVRDC, working in conjunction with Fayette County, Highland County, Clinton County, and the City of Wilmington, began its economic recovery strategy efforts in response to the closure of the DHL Airpark at Wilmington, Ohio. Rafeal Underwood, our Economic Recovery Coordinator, began his duties on January 8, 2009 as part of our US Department of Commerce, Economic Development Administration (EDA) funded Economic Adjustment Assistance grant. Mr. Underwood was successful in developing the Clinton County Comprehensive Economic Development Strategy (CEDS) and assisted with the submission of four grant applications for EDA grant consideration. Mr. Underwood was also successful in the development of the Tri-County Economic Recovery Strategy, which identifies strategies to assist the tri-county region with moving forward with economic recovery efforts.

The greatest success as a result of these recovery efforts has been the ability to save 52 jobs in Greenfield, Ohio. Mr. Underwood and OVRDC staff assisted the Highland County Commissioners with the establishment of a Community Development Block Grant (CDBG) Revolving Loan Fund in the county to assist with business development efforts. The establishment of the loan fund will provide financing to C-Mold Acquisition, LLC with the purchase of C-Mold, Inc. in Greenfield, Ohio, thus saving 52 jobs at the facility. In addition to the jobs saved, C-Mold Acquisition, LLC will create 15 additional jobs over the next three years.



OVRDC's 2009 CEDS

The U.S. Department of Commerce, Economic Development Administration (EDA) requires OVRDC to develop a Comprehensive Economic Development Strategy (CEDS) every 5 years. During 2009, Ohio Valley Regional Development Commission continued to work with its CEDS (Strategy) Committee to complete the 2009 CEDS, which will identify the region's economic development goals and strategies for the next five years. Priority projects will also be identified for possible EDA investment consideration.

OVRDC's 2009 CEDS can be downloaded in PDF format along with supporting information by visiting the OVRDC website at www.ovrdc.org, then by clicking '2009 CEDS' on the left-hand menu. Once to the 2009 CEDS page you will find the report along with supporting information and previous OVRDC CEDS Reports.

Broadband Access through Connecting Appalachia

In late 2008, discussions began about the possibility of a multi-county initiative to get broadband access to most areas of Appalachia Ohio. Three of Ohio's Local Development Districts (Ohio Valley Regional Development Commission, Buckeye Hills-Hocking Valley Regional Development District, and the Ohio Mid-Eastern Governments Association) were asked to join early in the project's development to provide regional support. The Ohio Local Development Districts were instrumental in securing support from their member counties for the project.

In 2009, the Southern Ohio Health Care Network (SOHCN) made application through the US Department of Commerce (DOC) National Telecommunications and Information Administration (NTIA) requesting almost \$189 million for the Connecting Appalachia Initiative. This project offered a comprehensive and sustainable plan to expand broadband availability across 34 underserved rural Ohio counties (29 in Ohio Appalachia). Based on an innovative technology package and carrier partnerships, the project would have delivered metropolitan-class broadband in local communities, residential fixed-wireless broadband in the rural expanse of the region, and mobile data services for first responders.

In early 2010, the SOHCN was notified by the US-DOC NTIA that its application was not selected for funding for the first round of American Recovery and Reinvestment Act (ARRA) broadband funding. Despite this news, efforts to secure Round 2 ARRA funds for broadband are currently occurring.

OVRDC will continue to support efforts to provide better broadband access to businesses and citizens in the region. The lack of access to broadband technology continues to be an economic development concern.



Appalachian Regional Commission

During Fiscal Year 2009, the Ohio Valley Regional Development Commission provided technical assistance to public and private non-profit organizations resulting in the following outcomes: 262 jobs created, 949 jobs retained, 891 households served with water and/or sewer, and 3,120 people served with up-to-date medical care. The following projects helped achieve those outcomes.

Project Title	ARC Funds	Leveraged Funds
Lawrence County Medical Center Colon Cancer Screening (Lawrence)	\$200,000	\$491,000
Green Acres/Slate Mills Sewer Project (Ross)	\$250,000	\$898,020
Adena Health Systems Primary Care Expansion (Jackson)	\$42,500	\$42,500
Loveland Downtown Redevelopment Project (Clermont)	\$250,000	\$790,800
New Richmond Front Street Downtown Revitalization (Clermont)	\$136,800	\$339,021
The Counseling Center Family Health Care Center X-Ray Equipment (Scioto)	\$73,413	\$31,462
Lawshe Area Waterline Extension (Adams)	\$250,000	\$1,840,650
Richmond Dale Sanitary Sewer and WWTP (Ross)	\$250,000	\$2,127,840
Kelly Road Waterline Extension (Vinton)	\$250,000	\$63,000
Beaver Water System Improvements (Pike)	\$250,000	\$62,500
Mifflin Township Waterline Extension (Pike)	\$250,000	\$1,100,000
Gallia S.R. 850 Access Road (Gallia)	\$500,000	\$4,150,000
Williamsburg 8 th Street Water Tower Elevation and Rehabilitation (Clermont)	\$100,000	\$367,800
Total	\$2,802,713	\$12,304,593

Community Development Block Grant (CDBG) Administration

The Ohio Valley Regional Development Commission (OVRDC) has, for several years, provided communities throughout the region with administration support on Community Development Block Grant (CDBG) funded projects.

In 2009, the following CDBG administration contracts were worked on by OVRDC staff: Village of Sardinia Wastewater Treatment Plant Upgrade, Village of Ripley Wastewater Treatment Plant Upgrade, Village of Mowrystown Sanitary Sewer Collection System, Village of Highland Sanitary Sewer Collection System, Scioto County Pump Station Rehabilitation and Manhole Replacement, City of Greenfield Wastewater Treatment Plant Upgrade, Village of Bloomingburg Wastewater Treatment Plant Upgrade, Village of Clarksburg Wastewater Treatment Plant Upgrade, Village of Peebles Wastewater Treatment Plant Upgrade, Richmond Dale (Ross County) Sewer System, Village of Coalton Sewer System Expansion, Village of Frankfort Water System Improvements, and Highland County Revolving Loan Fund.

Mifflin Township Waterline Extension Project

In 2009, OVRDC assisted the Pike County Commissioners in applying for and receiving \$250,000 from the Appalachian Regional Commission for the Mifflin Township Waterline Extension project. Residents in Mifflin Township had been dealing with contaminated wells for many years. This project will install 73,300 linear feet of waterlines, one booster station, 80-meter sets, hydrants and a telemetry system into Mifflin Township serving 80 households or approximately 240 residents.



Construction of the Mifflin Township Waterline Extension in December 2009



On October 30, 2009, Fred Deel presented the Pike County Commissioners with a \$250,000 mock check for the Mifflin Township Waterline Extension project. (Pictured left to right: Cindy Howard, Director of Pike County Community Development; Teddy West, Pike County Commissioner; David Hodapp, Representative for Senator Sherrod Brown; Harry Rider, Pike County Commissioner; Fred Deel, Director of Governor's Office of Appalachia; David Daniels, State Representative 86th District; Blaine Beekman, Pike County Commissioner; John Hemmings, Executive Director of Ohio Valley Regional Development Commission; and Steven Caraway, Representative for Congresswoman Jean Schmidt.

District 15 Ohio Public Works Commission

The Ohio Public Works Commission was created to assist in financing local public infrastructure improvements for roads, bridges, culverts, water supply systems, wastewater systems, storm water collection systems, and solid waste disposal facilities. Since the creation of both the State Capital Improvement Program (District Fund) and the Local Transportation Program (LTIP) District 15 that include Adams, Brown, Fayette, Gallia, Highland, Jackson, Lawrence, Pike, Scioto, Ross and Vinton counties has been successful in getting much needed infrastructure projects funded. Including the list of projects below that was funded in Round 23:

District Fund - \$10,339,385

Scioto County Sanitary Sewer Improvements
 Village of Lynchburg WWTP Improvements
 Adams County Sproull Bridge Replacement
 Gallia County Kanauga/Addison Sanitary Sewer
 City of Ironton North Sewer Separation
 Vinton County Stanart Hollow TR Bridge Replacement
 Ross County Multi Road Improvements
 Adams County Regional Water /Lawshe Road Waterline
 Highland County Bridge Replacement
 Scioto Water Recarbonation
 Pike County Mifflin Township Waterline Extension
 Lawrence County Joint Resurfacing Project B
 City of Jackson SR 93 Water Main Replacement
 City of Hillsboro WWTP Expansion Bypass Elimination
 City of Washington CH Sanitary Sewer Improvements
 Pike County Road/Bridge Replacement
 Mt. Orab Apple Street Extension
 Fayetteville/Perry Township WWTP Replacement
 Gallia County Road Resurfacing

LTIP Fund - \$6,72,799

Brown County Love Road Bridge Replacement
 Jackson County Bloomfield and Liberty Township Joint Project
 Fayette County White Road Bridge and Resurfacing
 Scioto County Disterdick Lane Bridge Replacement
 City of Chillicothe Street Improvements
 Village of McArthur Street Resurfacing
 Lawrence County Joint Resurfacing Project A
 Scioto County Highway Improvement
 Highland County-Fairfield Township TR 331-A Reconstruction
 Scioto County Bloom Township Bridge Road Repair
 Scioto County Knapp Road Bridge Replacement
 Village of Peebles Vine Street Improvements
 Brown County Township Road Restructuring
 Pike County Bailey Chapel Bridge Replacement & Salem Cave Paving
 Highland County Various County Road Widening and Paving
 Highland County CR 12- A,B,C Paving

Small Governments Fund - \$1,172,519

Village of Oak Hill Sewer Collection & Water System Telemetry
 Village of Beaver Water System Improvements
 Village of Georgetown WWTP High Flow Management Upgrades
 Village of Frankfort Water System Improvements

Sugar Camp-Jackson Fork Road

A recent success story is that of Sugar Camp-Jackson Fork Road a joint project between Scioto County and Bloom Township Trustees. The total project cost was \$553,582 and was funded by county local match, Ohio Public Works Commission (OPWC) and USDA Rural Development. The project involved a bridge replacement in Scioto County as well as a much needed roadway improvement in Bloom Township. As Craig Opperman, Scioto County Engineer stated “funding of this project would not have been possible without the Local Transportation Improvement Program of the Ohio Public Works Commission and USDA Rural Development”. Mr. Opperman also credited assistance and support of Ohio Public Works Commission, Ohio Valley Regional Development Commission, and USDA Rural Development, stating “without these entities the Scioto County Engineer’s Office and Bloom Township would not have been able to bring these much needed improvements to Scioto County”. This project is an excellent example of combining federal, state, and local resources for infrastructure development.



Picture above shows work being completed on Sugar Camp-Jackson Fork Road Bridge



Picture above shows Sugar Camp-Jackson Fork Road Bridge completed.

Small Business Revolving Loan Fund (RLF)

The Ohio Valley Regional Development Commission's (OVRDC's) Small Business Revolving Loan Fund (RLF) program has operated the last 23 years through two (2) loan fund programs funded by the Appalachian Regional Commission (ARC) and U.S. Department of Commerce Economic Development Administration (EDA).

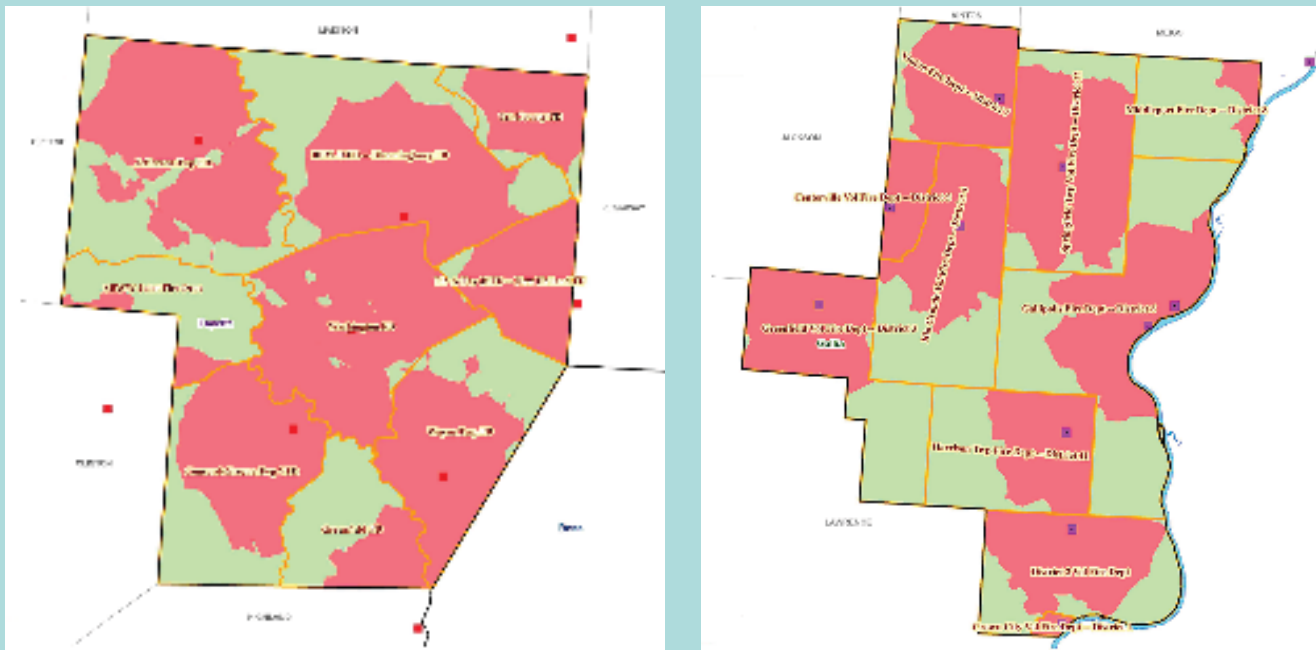
Since its inception, a total of 72 loans have been closed, 39 from our ARC RLF program and 33 from our EDA RLF program. The total RLF investment is \$4,715,314; \$2,798,089 from our ARC RLF and \$1,917,225 from our EDA RLF program. The total private and owner equity investments are \$25,677,768 (\$12,841,113 ARC RLF and \$12,836,655 EDA RLF). The impact of jobs created and retained is 3,436 (1,122 ARC RLF and 2,314 EDA RLF). The RLF program is an important additional financing resource for district businesses wishing to start up expand and create and/or retain full-time equivalent jobs within the OVRDC District.



Planning for Future Fire Protection and Housing Development

The Ohio Valley Regional Development Commission (OVRDC) was awarded a \$105,000 HUD Rural Housing and Economic Development Capacity Building Grant in December 2005. The project originally covered Adams, Jackson, Pike, and Vinton Counties. The project consisted of utilizing GPS to plot fire stations and response areas for fire departments serving the four counties. Mileage intervals were determined from each fire station to determine the “protected” and “unprotected” class areas. Insurance companies consider housing units beyond five or six miles from a fire department as “unprotected” class and homeowner’s insurance premiums for these housing units can be expensive. The number of housing units in the “protected” and “unprotected” class areas was also determined, and an analysis of the “protected” class areas was completed to determine the best areas for housing development.

OVRDC requested and was approved for an extension of the project completion date to June 30, 2009. As part of the extension, four additional counties (Fayette, Gallia, Ross and Scioto Counties) were added to the project. The scope of work for these four additional counties did not include the analysis of the “protected” class areas to determine the best areas for housing development. Reports and maps have been developed for each county and posted to OVRDC’s website www.ovrdc.org to be downloaded and viewed.



OVRDC Continues to Serve Region as Data/GIS Information Center

The Ohio Valley Regional Development Commission (OVRDC) is a designated regional affiliate of the Ohio Department of Development’s Office of Strategic Research and regularly receives data and statistics from the U.S. Census Bureau and other sources. OVRDC also maintains a geographic information system (GIS) and utilizes a global positioning system (GPS) for its planning activities. This GIS/GPS system is used to create an assortment of maps and conduct a variety of analysis projects. For specific data and/or mapping needs, feel free to contact our office for assistance. In 2009, OVRDC assisted with 35 individual data and/or mapping requests from members and constituents. In addition, we offer several general data/statistics resources, GIS/GPS created maps and reference links on our website www.ovrdc.org.

2009 Budget

The Ohio Valley Regional Development Commission receives financial support from Federal, State and local funding resources which help support our 9 staff members who perform an excellent job for the Commission. Our Federal funding partnerships for 2009 are with the Appalachian Regional Commission (ARC) for our Local Development District (LDD) activities; USDA Rural Development (RD) under their Rural Community Development Initiative (RCDI) for our Project "LEAD" (Leadership in Entrepreneurial Assistance and Development), and under their Rural Business Opportunity Grant (RBOG) program for our Ohio Valley Hardwood Kiln Feasibility Study Initiative; U.S. Department of Commerce, Economic Development Administration (EDA) under their Planning Assistance program for our Economic Development District (EDD) activities and under their Economic Adjustment Recovery Strategy program for our Economic Recovery Efforts in Fayette, Highland counties as well as Clinton County and the City of Wilmington; U.S. Department of Housing & Urban Development under their Rural Housing & Economic Development (RHED) program for the final phases of our Planning for Future Fire Protection and Housing Development Initiative; and the University of Vermont & State Agricultural College for our final phase of the Southern Ohio Alternative Energy Development Initiative funded under a sub-award from ARC for Sustainable Agriculture Research & Education. Our State funding partnerships for 2009 are with the Governor's Office of Appalachia (GOA) Ohio Department of Development (ODOD) for our Appalachian Local Development District activities and our special initiative for the Corridor Study; Ohio Public Works Commission (OPWC) to support the programs of the District 15 Public Works Integrating Committee, and the Southern Ohio Agricultural and Community Development Foundation (SOACDF). The local resources are from 12 member counties which have helped leverage the federal and state resources.

FY 2009 Revenues

A	ARC - LDD	\$ 213,000
B	USDA RD	\$ 9,803
C	USDOC EDA EDD	\$ 67,259
D	USDOC EDA EARS	\$ 115,492
E	HUD - RHED	\$ 15,161
F	UVM SARE	\$ 6,007
G	ODOD	\$ 153,033
H	OPWC	\$ 65,000
I	SOACDF	\$ 28,315
J	LOCAL	\$ 94,257
K	IN-KIND	\$ 6,841
	Total Revenues	\$ 774,168

FY 2009 Expenses

A	Personnel	\$ 307,753
B	Fringe	\$ 131,410
C	Travel	\$ 27,870
D	Supplies	\$ 9,422
E	Contractual	\$ 127,134
F	Other	\$ 33,970
G	Indirect	\$ 129,768
H	In-Kind	\$ 6,841
	Total Expenses	\$ 774,168

2009: A Review in Pictures



2009 PROJECT REVIEW COMMITTEE

Elaine Collins, Adams County
 Kelly Cole, Brown County
 Andy Kuchta, Clermont County
 Tim Mitchel, Fayette County
 Brett Boothe, Gallia County
 Dan Cowdrey, Highland County
 Stephanie Filson/Jennifer Jacobs, Jackson County
 Ralph Kline, Lawrence County
 Nathan Davis/Cindy Howard, Pike County
 Kelly Shelton, Ross County
 Steve Carter, Scioto County
 Ken Reed, Vinton County

PERSONNEL COMMITTEE

Bob Proud
 Doug Corcoran
 Eugene Collins
 Rick McNelly
 Roger Rhonemus
 Katy Farber
 Justin Fallon

LOAN REVIEW COMMITTEE

Patty Wilmoth/Judd Johnson, Adams County
 Raymond Sininger, Brown County
 Jim Huebner, Clermont County
 Bill Cupp, Fayette County
 Marianne Campbell, Gallia County
 Dan Cowdrey, Highland County
 Fred Mavis, Jackson County
 Ralph Kline/Cindy Caskey, Lawrence County
 Chris Ervin, Pike County
 Delbert Bochard, Ross County
 Lee Powell, Jr., Scioto County
 Terri Fetherolf, Vinton County

FINANCE/AUDIT COMMITTEE

Bob Proud
 Roger Rhonemus
 Doug Corcoran

2009 NOMINATING COMMITTEE

Jim Keels, Chairman
 Eugene Collins
 Jack DeWeese
 Margery Paeltz
 Harry Rider

2009 CEDS COMMITTEE

Adams
 Roger Rhonemus
 G.H. "Harty" Wallingford

Brown
 Ben Houser

Clermont
 Dave Kennedy
 Tim Ross

Fayette
 Joe Denen
 Doug Marine

Gallia
 Tracy Stewart-Call
 Brett Boothe

Highland
 Sherry Stout
 Charles Stevens

Jackson
 Rick McNelly
 Jack Webb

Lawrence
 Carl Darling
 Jewel Hackworth

Pike
 Sharon Manson
 Robert Matthey

Ross
 Mal Payne
 Tom White

Scioto
 Gary Coleman
 Don Hadsell

Vinton
 Michael Bledsoe
 Dana Eberts

2009 OVRDC EXECUTIVE COMMITTEE

Adams County
Roger Rhonemus
Russ Brewer

Brown County
Margery Paeltz
Ben Houser

Clermont County
Bob Proud
Ken Morrison

Fayette County
Jack DeWeese
Doug Marine

Gallia County
Justin Fallon
Paul Harrison

Highland County
Gary Heaton
Charles Stevens

Jackson County
Edmund Armstrong
Rick McNelly

Lawrence County
Les Boggs
Carl Darling

Pike County
Harry Rider
Larry Meredith

Ross County
Doug Corcoran
Joseph P. Sulzer
Tom White

Scioto County
Mike Crabtree
Jim Kalb
Gary Coleman
Eugene Collins Sr.

Vinton County
Tom Morgan
Rick Reynolds

OVRDC STAFF

John Hemmings
Executive Director
E-mail address – jhemmings@ovrdc.org
Phone Extension #13

Rebecca Banchy-McIlwain
Finance Director
E-mail address – rbmcilwain@ovrdc.org
Phone Extension #19

Sharon Clark
Administrative Assistant
E-mail address – sclark@ovrdc.org
Phone Extension #29

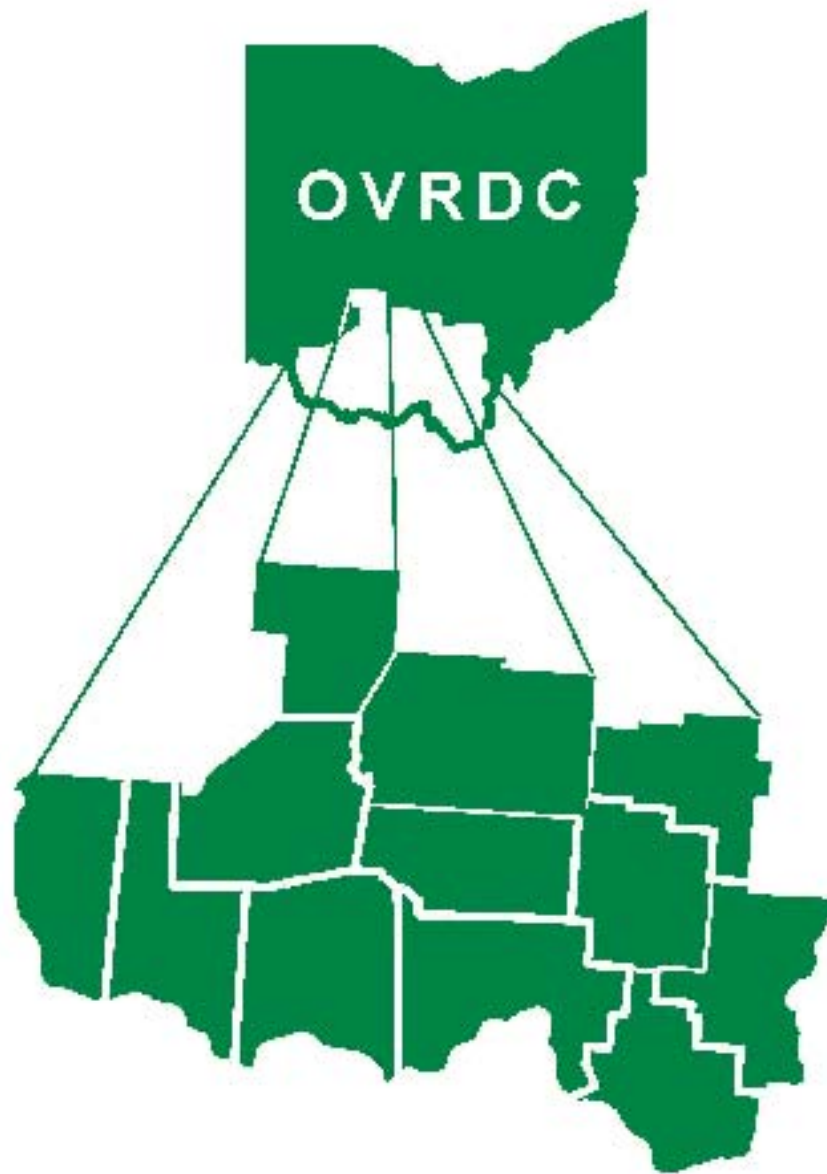
Juanita Bragg
Bookkeeper
E-mail address – jbragg@ovrdc.org
Phone Extension #17

Jason Gillow
Research/Planning Specialist
E-mail address – jgillow@ovrdc.org
Phone Extension #27

Shannon Nichols
Program Secretary
E-mail address – snichols@ovrdc.org
Phone Extension #10

Kim Reynolds
Community Development Coordinator
E-mail address – kreynolds@ovrdc.org
Phone Extension #21

Michele Throckmorton
Economic Development Coordinator
E-mail address – mthrockmorton@ovrdc.org
Phone Extension #18



Ohio Valley Regional Development Commission
9329 State Route 220 East, Suite A
Waverly, OH 45690-9012

Website: www.ovrdc.org
E-mail: email@ovrdc.org